

• APTIV •



Drone Technologies

Proven solutions for powering mission-critical drone platforms, from package delivery to forward-deployed devices in contested environments

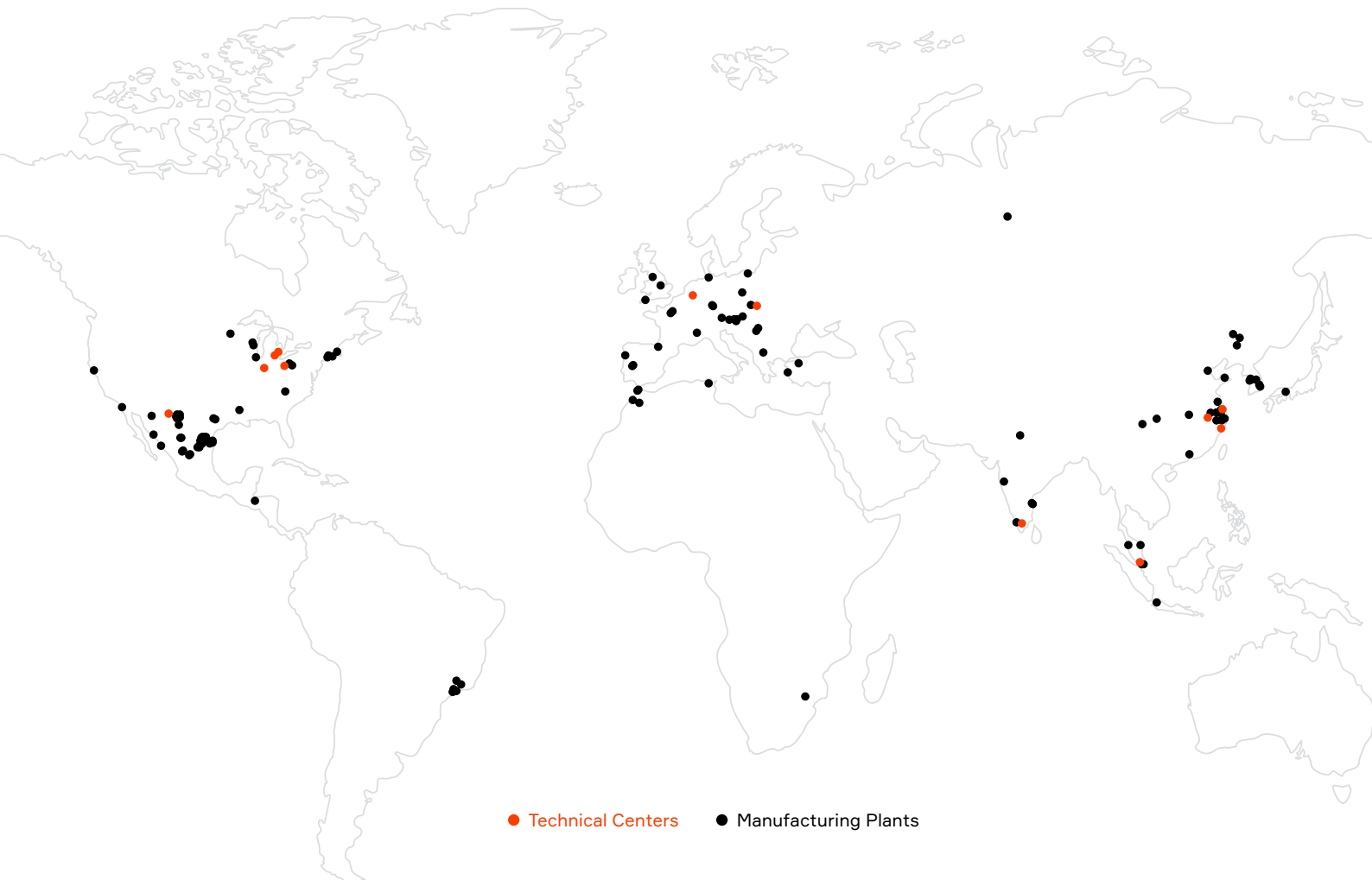


Trusted Innovation and Scaling Partner

INTELLIGENT SOLUTIONS ON A GLOBAL SCALE WITH REGION-SPECIFIC SUPPLY CHAIN

Operators need to trust that their advanced unmanned and autonomous platforms will work reliably in the most demanding operating environments, from congested airspace to locations far from modern infrastructure. For decades, Aptiv has been enabling intelligent automation while acting as the partner of choice for those looking to rapidly scale production.

With more than 75 manufacturing locations globally, Aptiv has the necessary footprint to enable flexible, CAPEX-light scaling for our customers. At the same time, we support program-scale deployment, long-term component availability and lifecycle sustainment through resilient, region-specific supply chains tailored to the local needs of our customers and the regions in which they operate and continuously monitored and enhanced through our industry-leading supply chain digital twin.





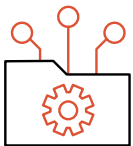
Why Aptiv?

Leading drone and robotics companies choose Aptiv as a trusted innovation and scaling partner due to our three core strengths: a proven product portfolio; comprehensive integration, testing and validation expertise; and global manufacturing scale with resilient, region-specific supply chains.



PROVEN PRODUCT PORTFOLIO

Our technologies enable drone applications to take on increasingly complex and consequential roles, supporting real-time data processing, decision support and autonomous functions while meeting rigid SWaP-C requirements.



SYSTEMS INTEGRATION EXPERTISE

Aptiv is a leader in integration, testing and validation for complex, mission-critical solutions. We support interoperability across heterogeneous fleets through open architectures, multi-vendor integrations and rapid mission-system upgrades.



GLOBAL SCALE WITH LOCALIZED SUPPLY CHAINS

Aptiv's resilient, global manufacturing footprint includes regionalized supply chains for CAPEX-light scaling.



Integration, Test and Validation

As a Tier 1 systems integrator for some of the most complex, mission-critical embedded solutions on the planet, we have the tools, processes and people to support comprehensive integration and certification needs. Our systems are built for interoperability across heterogeneous fleets, supporting open architectures, multi-vendor integrations and rapid upgrades over a product's complete service life.



Proven Product Portfolio

Aptiv has been delivering safety-certifiable, deterministic software and compute and sensing solutions for mission-critical applications for more than three decades. These capabilities have established us as a leader in multimodal perception, regardless of environmental conditions. We know what it takes to efficiently and effectively apply AI and machine learning to resource-constrained devices while optimizing the overall software and hardware architecture to meet rigid size, weight, power and cost (SWaP-C) requirements. Whether the requirements call for advanced perception, a proven real-time operating system (RTOS), high-performance compute, high-speed or high-power interconnects, or cable management and protection, Aptiv has the integrated technologies for applications that cannot fail.

Sensing & Compute



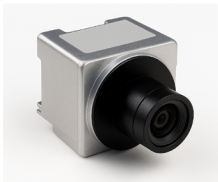
APTIV RADARS

Radars and software delivering advanced performance for detection and object tracking across all weather and lighting conditions while providing native distance detection



APTIV PULSE™ SENSOR

Compact radar-camera combination optimized for high-precision, short-range detection



APTIV CAMERAS

Smart and satellite cameras supporting the high-resolution vision solutions required for AI-powered autonomy



APTIV COMPUTE

Scalable, efficient and high-performance embedded compute platforms purpose-built for software-defined intelligent edge applications

Software Products



VXWORKS®

Safety certified RTOS from Wind River with deterministic performance and reliability for mission-critical embedded systems



ELXR PRO™

Enterprise-grade Linux for the mission-critical and AI/ML-powered workloads needed in regulated industries



HELIX™ VIRTUALIZATION PLATFORM

Embedded virtualization platform that allows multiple operating systems to run simultaneously on a single SoC

Connector Series for Low-Voltage Applications



NANOPACK™ CTS

Miniaturized connectors engineered for reliability in compact electronic applications



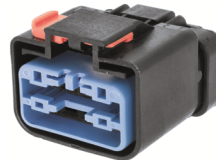
OCS 1.5 SEALED

Full inline and device connector series designed for improved reliability and a variety of uses across industries



CTS 1.2 SEALED

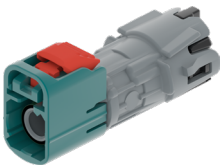
Sealed connection system delivering compact, reliable performance for harsh operating environments



APEX™ 2.8 SEALED

Ergonomic design and heavy-duty performance to withstand heat, vibration and moisture in harsh conditions

Connector Series for High-Speed Data Applications



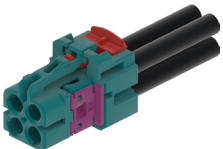
HIGH-SPEED FAKRA (HSF)

Supporting multigigabit data rates and power over coax for a simpler design



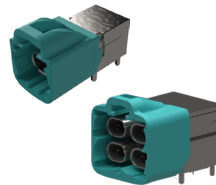
AMEC

Auto Mateable Modular Ethernet Connector can scale from 100 Mbps to 1 Gbps within the same footprint



MINI COAX

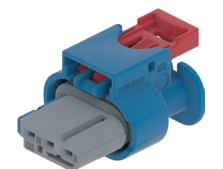
Supporting higher data rates up to 15 GHz as the next-generation of high-speed FAKRA



AMEC™-H (H-MTD®)

Next-generation networking applications that support 2-wire data transmission interconnects

Connector Series for Power Applications



48V CONNECTORS

Broad portfolio of 48V connectors for up to 60V with proven, robust terminal systems to avoid intermittent contacts



POWERPACK LV1000

High current carrying capacity, a proven terminal system and a compact design



Contact Us



Visit Our
Drones Page



Visit Our
Connection Systems
Page

• **APTIV** •