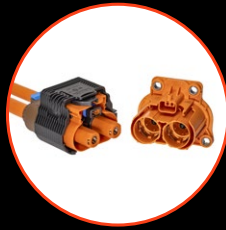


HIGH VOLTAGE CONNECTORS

PRODUCT CATALOG



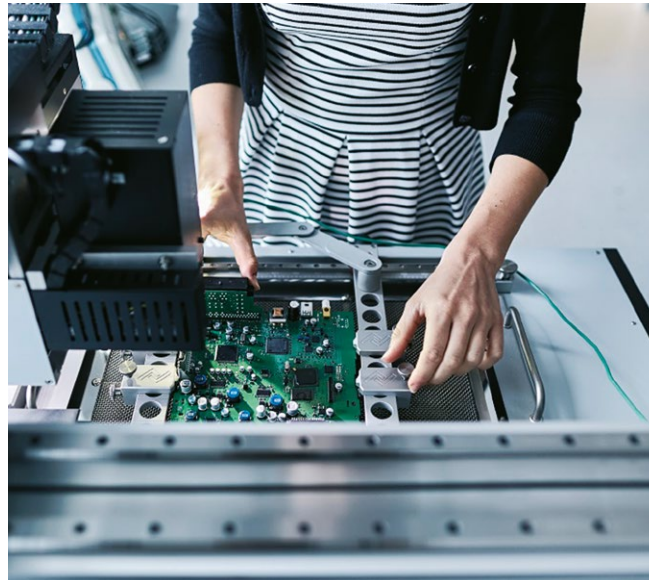
• **APTIV** •

Off-the-shelf-portfolio

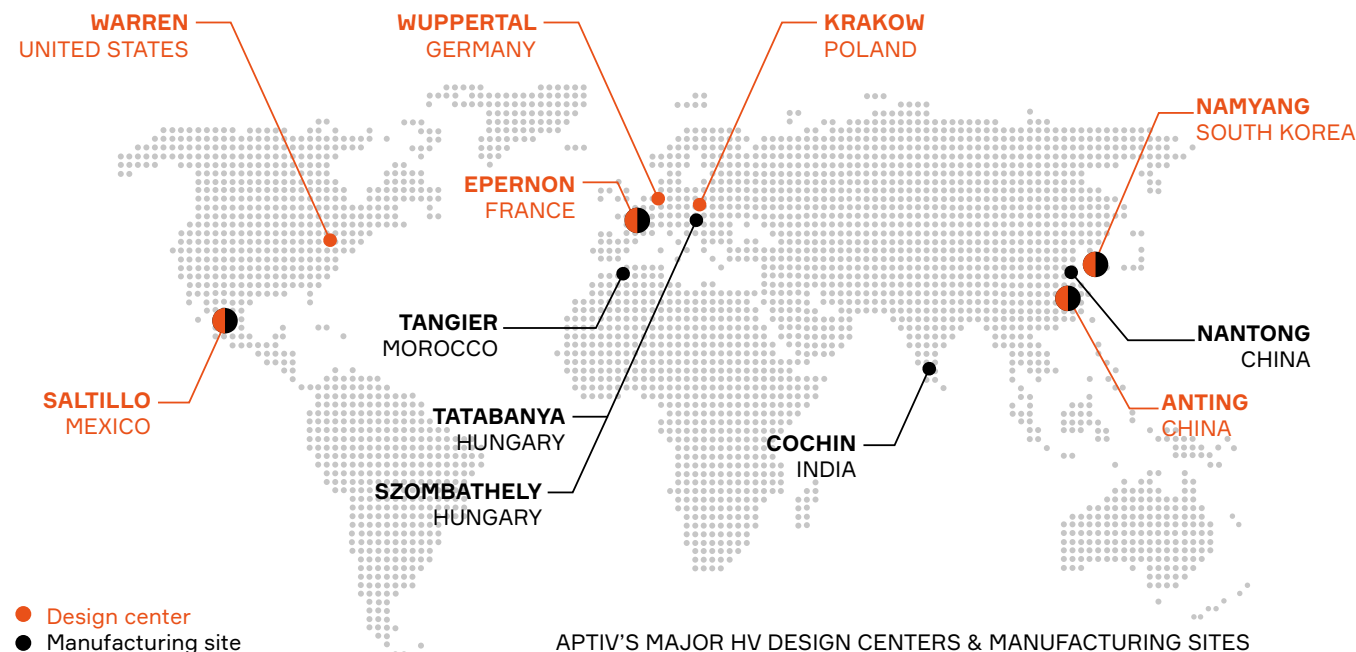
At Aptiv, we are born to move

Aptiv is a **global technology company** that develops safer, greener and more connected solutions enabling a more sustainable future of mobility.

VISIT **APTIV.COM** →



Aptiv is ready when and where you need us



The partner of choice for electrification solutions

System-Level Expertise

Aptiv has over 20 years of field-proven experience in automotive-grade high-voltage solutions. We design and develop connection systems for electrified vehicles, delivering power to the systems that need it most.

Everything in our electrification portfolio, including high-voltage electrical connectors to inlets, benefits from the knowledge, experience, research and know-how that goes into everything Aptiv builds for the system.

Aptiv engineers understand how to optimize the electrification system to match the overall vehicle architecture and adapt each component to customer-specific design requirements.

Making Mobility Greener

We envision a world with zero emissions. Making the future of mobility greener is at the heart of our mission.

We make intelligent design trade-offs that reduce cost, weight and mass, allowing for faster democratization of technologies that reduce CO2 emissions.

We enable a more sustainable future of mobility.



Did you KNOW?

Hybrid vehicles were once thought to be the next logical step in the evolution toward full EVs. Today, consumers thinking about going electric are more likely to buy an all-electric vehicle than a hybrid model.

That shift has major architectural implications for OEMs, because all-electric vehicles must deliver power not only to drive the wheels of the vehicle, but also to run all the other devices that in a gas-powered or hybrid vehicle would be powered by the engine.

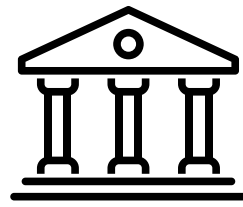
The good news is that Aptiv offers innovative solutions to reduce weight and mass while delivering power in a way that makes vehicle assembly safer and less complex.



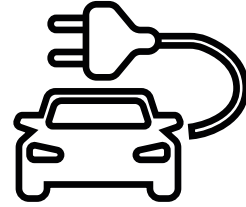
Why is vehicle electrification now accelerating?



CONSUMER
DEMAND



GOVERNMENT
REGULATIONS AND
INCENTIVES



OEM PRODUCTION
CAPABILITIES



The long-awaited inflection point for electric vehicles (EVs) has arrived. Consumers are demanding EVs, regulations are tightening, battery prices are falling, and OEMs are ramping up manufacturing capabilities.

This shift to EV architecture brings with it a series of new challenges, and the key for OEMs is to work with an electrification partner that can help design the most efficient, safest, most reliable and most cost-effective system for a vehicle's specific requirements.

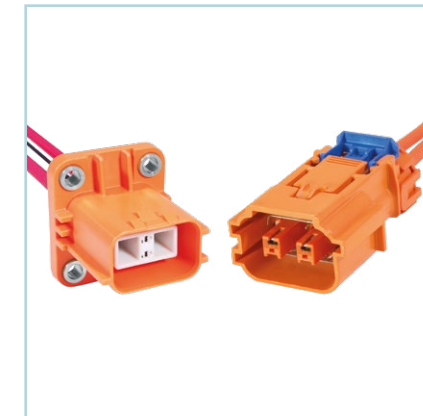
With a unique expertise in architecture optimization and systems integration, Aptiv has created one of the most comprehensive portfolios of high-power connection systems. We have the technical expertise and comprehensive product offerings to deliver a complete, integrated solution.

Superior Sealing Performances



All of our mated connection systems feature at least external IP67 sealing performance. To ensure optimum sealing performance, our connectors are designed for the harshest conditions due to a back sealing feature.

Superior Shielding Performances



EV and HEV electrical and electronic systems generate unwanted electromagnetic interference (EMI) which radiate from the interconnecting cables. The connection systems are designed by minimizing the paths along which these signals can escape. Our connectors and cabling designs provide high levels of shielding effectiveness to ensure EMI free performance of the complete system.

Superior Safety Performances



Our connectors provide finger-proof, 2-step disconnection technologies to guarantee optimum safety during all handling operations. They continue to meet with changing requirements of the OEM's in regard to HVIL on a vehicle system and connection system level. Additionally, our ErgoMate™ axial mating system helps achieve a lower profile solution while reducing mating forces. Our solutions offer position assurances in multiple options including: CPA (Connector Position Assurance), TPA (Terminal Position Assurance) and SPA (Screw Position Assurance).

A comprehensive product portfolio



High Voltage Auxiliary Modules

APPLICATION:

PTC heater, DC / DC converter, On-Board Charger (OBC), Electric AC, Battery pack, HV PDU

High Voltage Power Conversion

HV battery, E-motor, AC / DC inverter, Power electric box, Distribution Unit (HV PDU), DC / DC converter

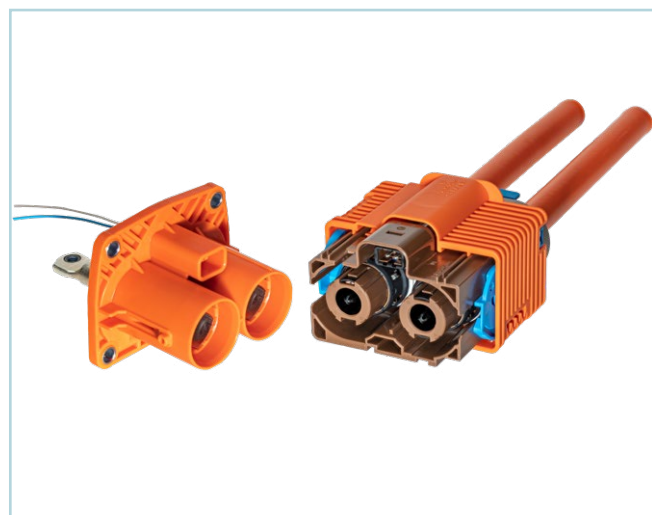
Charging Solutions

On-vehicle charging inlets



High Voltage connection systems designed specifically for the voltage and current needs of auxiliary modules, such as PTC heater, DC / DC converter, on-board charger (OBC), electric pack and HV power distribution unit (PDU).

See page **10 - 45**



High Voltage connection systems designed specifically for the voltage and current needs up to 420A. Power conversion modules consist of inverters, drive motors/generators, and high current/high voltage battery outputs.

See page **46 - 85**



With Aptiv products plug-in, hybrid and electric vehicles can be powered safely and efficiently at home or away. Aptiv offers a complete line of all global charging standards: SAE J1772 (North America and Japan), IEC62196 Type II (Europe) and GB/T 20234 (China). In addition, SAE has established a common footprint for DC (Direct Current) fast charging in North America and Europe, better known as Combo 1 and Combo 2.

See page **86 - 89**

Performance key & Aptiv design indicators key

VOLTAGE

Range: 12V - 1000V

AMPERAGE

Range: 10A - 420A

TEMPERATURE

Class	Ambient Temperature Range
T1	-40°C to +85°C
T2	-40°C to +100°C
T3	-40°C to +125°C
T4	-40°C to +150°C

VIBRATION

Class	Common Name	Typical Application
V1	Chassis Profile	Components on sprung portions of vehicle not coupled to Engine
V2	Engine Profile	Components coupled to Engine with severe vibration possible
V3	Severe On-Engine	Components subject to severe vibration
V4	Extreme Vibration	Used as needed to correlate to extreme vibration areas

SEALING CLASS

IP ratings according to IEC 60529

HV Interconnects Naming Keys

HV Interconnects Families

SHIELDPACK™	all HV Shielded connectors
POWERPACK	all HV Unshielded connectors

Terminal Types & Size

APEX	280
CTS	280/630
DCT	1400
HES	240
PP	1000/2000
RCS	800/890/1100/1190

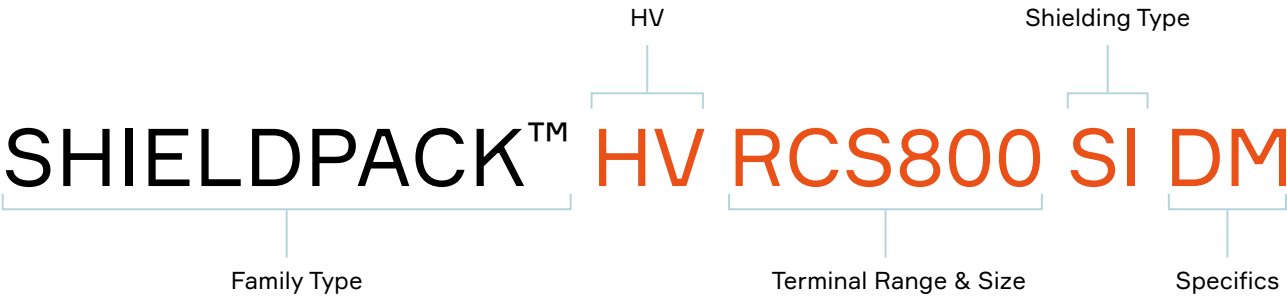
Shielding Types

SI	Shielded Individual
SB	Shielded Bundle
SMU	Shielded Multicore
UI	Unshielded Individual

Specifics

DM	Direct Mate
OBC	On-Board Charger
RV	Reduced Version
Splice	Integrated splice function

EXAMPLE:

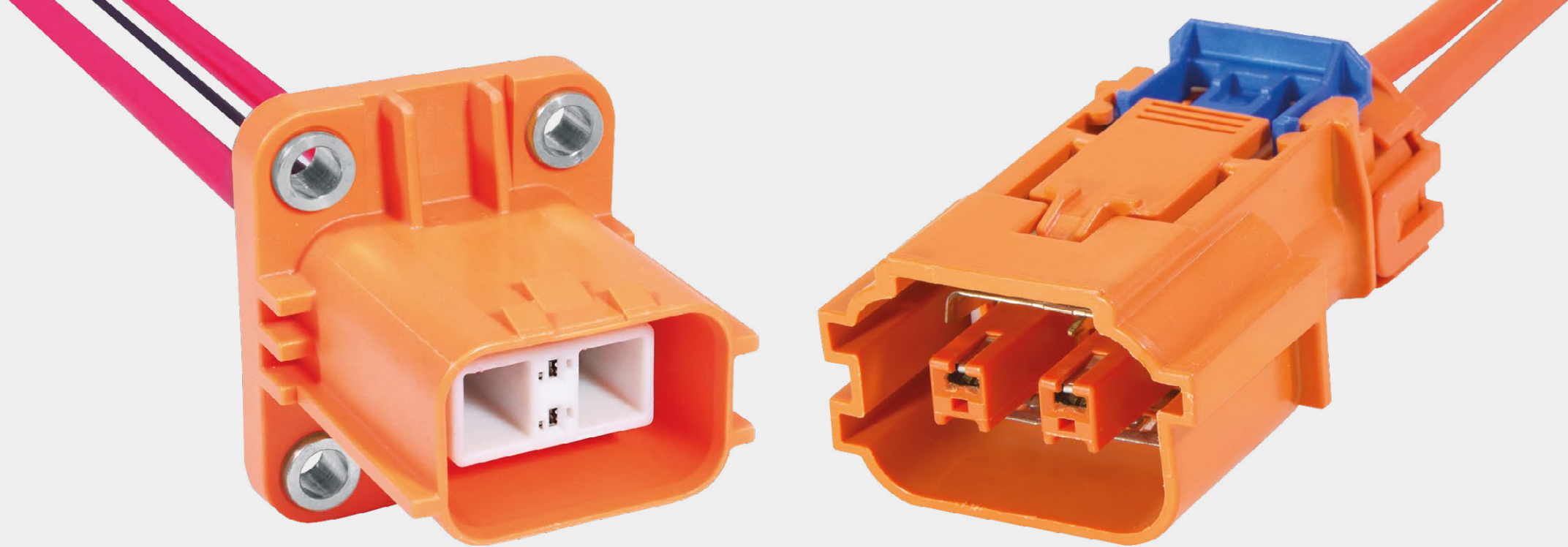


Auxiliary Modules Solutions

SELECTOR GUIDE

APPLICATIONS:

- PTC heater
- DC / DC converter
- On-Board Charger (OBC)
- Electric AC
- Battery pack
- HV PDU



Application	Battery pack, DC / DC converter, Electric AC, PTC heater, HV PDU, On-Board Charger (OBC)								
Product name	SHIELDPACK™ HV 280 SI 2 WAY	SHIELDPACK™ HV 280 SI 3 BAY HEADER	SHIELDPACK™ HV AK CLASS 1 SI 2 WAY	SHIELDPACK™ HV AK CLASS 1 SMU	SHIELDPACK™ HV APEX280 SB 2 WAY	SHIELDPACK™ HV CTS280 SI 4 WAY	SHIELDPACK™ HV APEX280 SI 4 WAY	SHIELDPACK™ HV CTS630 S 2 WAY	SHIELDPACK™ HV630 HVIL SI 2 WAY
Amperage at 85°C	40 A	40 A	32 A	32 A	40 A	40 A	50 A	50 A	60 A
Voltage	1000 V	1000 V	1000 V	1000 V	1000 V	1000 V	1000 V	1000 V	1000 V
Orientation	90° 180°	180°	180°	180°	180°	180°	90° 180°	180°	180°
# of ways (power)	2	2	2	2 & 3	2	4	4	2	2
HVIL	✓	✓	✓	✓	✓	✓	✓	×	✓
Shielding	Individual	Individual	Individual	Multicore	Bundle	Individual	Individual	Individual	Individual
Vibration Class	V2	V2	V2	V2	V1	V1	V2	V2	V1
Temperature Class	T3	T3	T4	T4	T3	T3	T3	T3	T3
Sections power	2 - 5 mm²	2 - 5 mm²	2.5 - 4 mm²	2.5 - 4 mm²	2.5 - 6 mm²	3 - 5 mm²	2.5 - 6 mm²	2 - 6 mm²	3 - 6 mm²
Sections HVIL	0.5 mm²	0.5 mm²	0.35 - 0.75 mm²	0.5 mm²	0.5 - 0.75 mm²	0.5 - 0.75 mm²	0.22 - 0.35 mm²	-	0.5 - 0.75 mm²
See Page	12 - 13	14 - 15	16 - 17	18 - 19	20 - 21	22 - 23	24 - 25	26 - 27	28 - 29



		Splicing accessory loads	On-Board Charger (OBC)				
SHIELDPACK™ HV AK CLASS 2 SMU 2 WAY	SHIELDPACK™ HV CTS630 SI 4 WAY	SHIELDPACK™ HV CTS280/630 SI SPLICE 4 WAY	POWERPACK HV HES240 UI OBC 4 WAY	POWERPACK HV APEX280 UI OBC 3 WAY	POWERPACK HV APEX280 UI OBC 5 WAY	SHIELDPACK™ HV AK CLASS 2 SMU 5 WAY	POWERPACK HV630 UI OBC 2 WAY
55 A	60 A	40 A	32 A	40 A	40 A	55 A	40 / 80 A
1000 V	1000 V	1000 V	600 V	600 V	600 V	1000 V	1000 V
180°	180°	180°	180°	180°	180°	180°	180°
2	4	4	4	3	5	5	2
✓	×	✓	✓	✓	✓	✓	✓
Multicore	Individual	Individual	No	No	No	Multicore	No
V2	V1	V1	V1	V1	V1	V2	V1
T4	T3	T3	T3	T3	T3	T4	T3
4 - 6 mm²	3 - 6 mm²	3 - 5 mm²	3 - 6 mm²	6 mm²	6 mm²	4 - 6 mm²	6 - 12 mm²
0.5 - 0.75 mm²	-	0.5 - 0.75 mm²	0.75 - 1 mm²	0.22 - 0.35 mm²	0.22 - 0.35 mm²	0.5 - 0.75 mm²	0.75 - 1 mm²
30 - 31	32 - 33	34 - 35	36 - 37	38 - 39	40 - 41	42 - 43	44 - 45

SHIELDPACK™

HV 280 SI 2 WAY



2 Way 180° Connection System
with Pluggable Inner Connector



2 Way 180° Connection System
without Pluggable Inner Connector

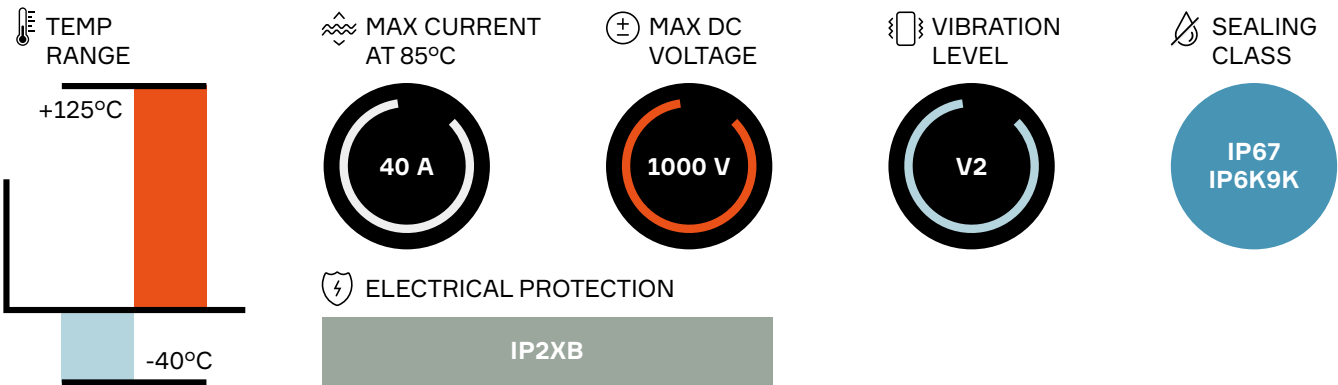


2 Way 90° Connection System

APPLICATIONS

- Battery pack
- DC / DC converter
- On-board charger (OBC)

PERFORMANCE



BENEFITS

- Inner connector with TPA can be plugged into header during device assembly (on wire-to-device)
- Industry-leading vibration performance
- Field proven design used across electrification market

FEATURES

- Tool-less unmating system
- Finger proof/touch safe
- Aluminum compression bushings
- ISO cable compatible

AVAILABLE CONFIGURATIONS

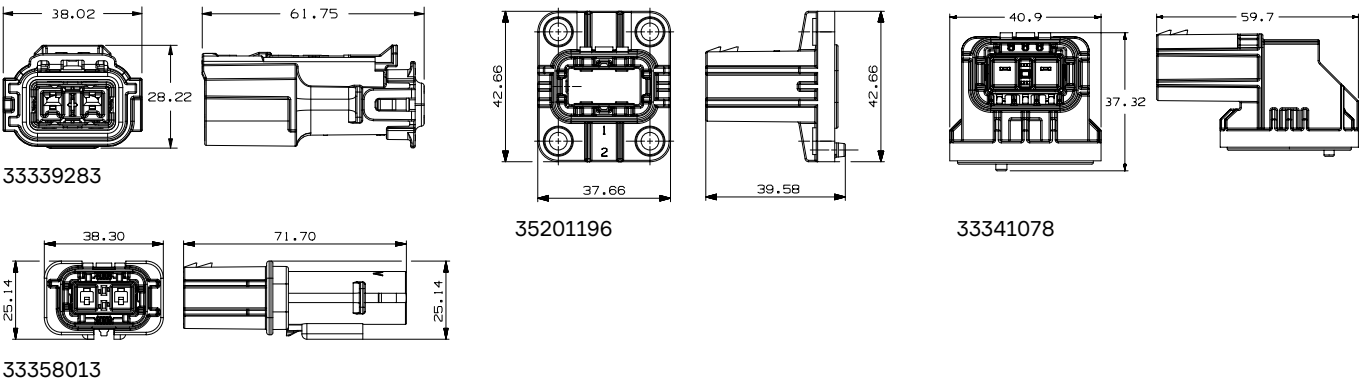
Connector Type	Wire-to-device, wire-to-wire
Cable Exit Orientation	90°, 180°
Cable Range (mm²)	2 - 5 (power) 0.5 (HVIL)
Terminal Type	CTS 2.8, Metri-pack 2.8
# of Power Terminals	2
Shielding Type	Individual
HVIL	Shunt on female
Assembly Assurance	CPA/TPA
Number of Indexes	3 (180°), 1 (90°)

Index	Header with pluggable inner connector		Header	Male inline connector	Mating connector	BOM
	Outer Header	Inner connector				
2 Way 180° Connection System						
101	35201196	15526394	33240508	33358013	33339283	1
102	35201197	15526395	33240509	33358014	33353455	
103	35201198	15526396	33240510	33358015	33353456	
2 Way 90° Connection System						
101	33341078	33341079			33339283	1

ASSOCIATED PARTS

Part number	Description	BOM
Header		
13753470	Metri-pack 2.8 male terminal 1 - 2 mm²	2
13753471	Metri-pack 2.8 male terminal 3 mm²	
13790534	Metri-pack 2.8 male terminal 4 - 5 mm²	
15432235	CTS HVIL female terminal 0.5 mm²	2
15526390	TPA	1
Inline Male		
13753470	Metri-pack 2.8 male terminal 1 - 2 mm²	2
13753471	Metri-pack 2.8 male terminal 3 mm²	
13790534	Metri-pack 2.8 male terminal 4 - 5 mm²	
13737699	Inner ferrule 3 mm²	2
33292550	Inner ferrule 5 mm²	
13737702	Outer ferrule 3 mm²	2
33292551	Outer ferrule 5 mm²	
15513453	Cable seal 3 mm²	1
15513451	Cable seal 5 mm²	1
13824779	TPA / strain relief 3 mm²	1
13888072	TPA / strain relief 5 mm²	1
Mating connector		
13882331	CTS 2.8 female terminal 3 - 5 mm²	2
13737699	Inner ferrule 3 mm²	2
33292550	Inner ferrule 5 mm²	
13737702	Outer ferrule 3 mm²	2
33292551	Outer ferrule 5 mm²	
15513453	Cable seal 3 mm²	1
15513451	Cable seal 5 mm²	1
13824779	TPA / strain relief 3 mm²	1
13888072	TPA / strain relief 5 mm²	1

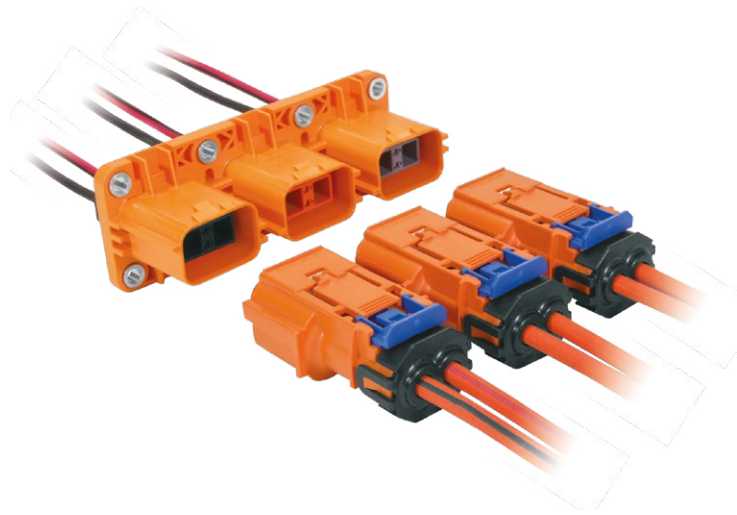
DIMENSION MEASUREMENT SAMPLE



Part numbers, specifications, dimensions and performance data in this document are for general references only and are subject to change without notice. To verify product information, please contact an Aptiv representative.

SHIELDPACK™

HV 280 SI 3 BAY HEADER



BENEFITS

- Answering to space constraints by having the 3 headers bolted together
- Inner connector with TPA can be plugged into header during device assembly (on wire-to-device)
- Industry-leading vibration performance
- Field proven design used across electrification market

FEATURES

- Tool-less unmating system
- Finger proof/touch safe
- Aluminum compression bushings
- ISO cable compatible

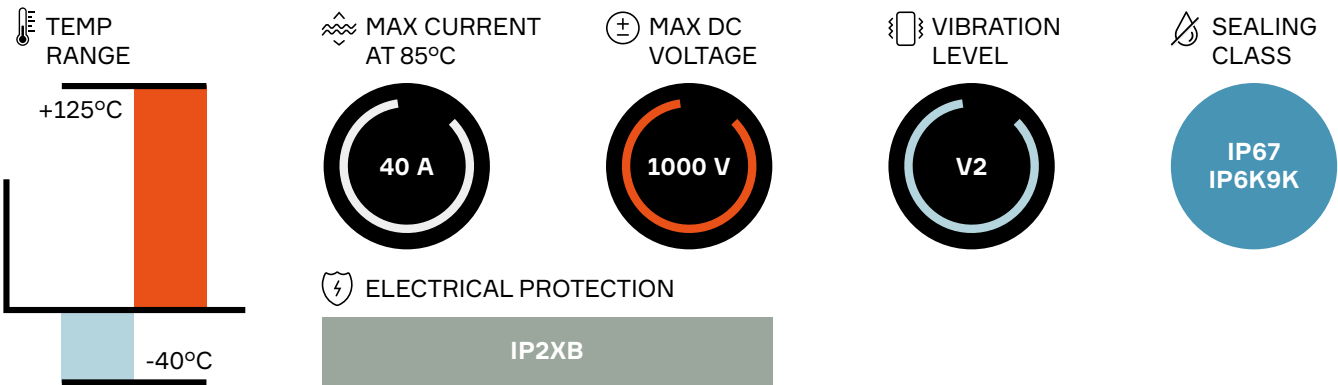
APPLICATIONS

Battery pack
DC / DC converter
On-board charger (OBC)

AVAILABLE CONFIGURATIONS

Connector Type	Wire-to-device
Cable Exit Orientation	180°
Cable Range (mm²)	2 - 5 (power) 0.5 (HVIL)
Terminal Type	CTS 1.2, Metri-pack 2.8
# of Power Terminals	2
Shielding Type	Individual
HVIL	Shunt on female
Assembly Assurance	CPA/TPA
Number of Indexes	3

PERFORMANCE

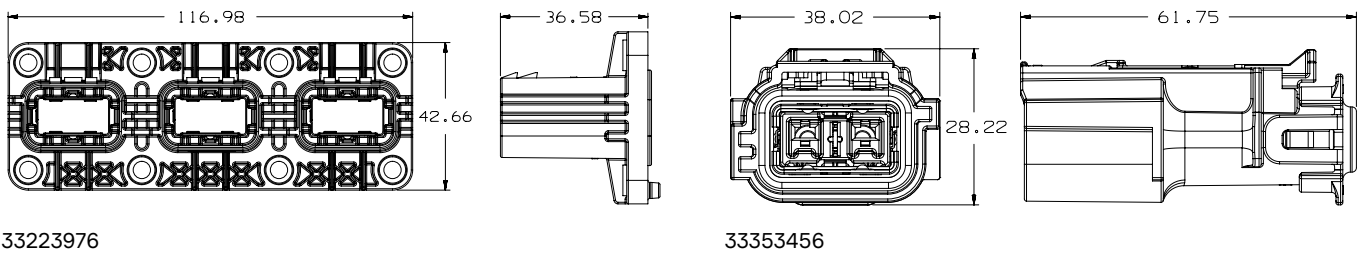


Index	Header outer	Header inner connector	Mating connector	BOM
103	33223976	15526396	33353456	1
104		15526397	33353457	
105		33137225	33353458	

ASSOCIATED PARTS

Part number	Description	BOM
Header		
13753470	Metri-pack 2.8 male terminal 1 - 2 mm²	2
13753471	Metri-pack 2.8 male terminal 3 mm²	
13790534	Metri-pack 2.8 male terminal 4 - 5 mm²	
15432235	CTS HVIL female terminal 0.5 mm²	2
15526390	TPA	1
Mating connector		
13882331	CTS 2.8 female terminal 3 - 5 mm²	2
13737699	Inner ferrule 3 mm²	2
33292550	Inner ferrule 5 mm²	
13737702	Outer ferrule 3 mm²	2
33292551	Outer ferrule 5 mm²	
15513453	Cable seal 3 mm²	1
15513451	Cable seal 5 mm²	1
13824779	TPA / strain relief 3 mm²	1
13888072	TPA / strain relief 5 mm²	1

DIMENSION MEASUREMENT SAMPLE



SHIELDPACK™

HV AK CLASS 1 SI 2 WAY



BENEFITS

- High operating temperature
- High robustness against vibrations
- Standard AK interface
- Multiple layout & HVIL options offered with same interface (see also Multicore Shielded series)

FEATURES

- For applications with needs up to 40A
- Compliant to LV214 / LV215
- Patented squeezing fixture for enhanced anti-vibration performance
- Smaller package size than Multicore version

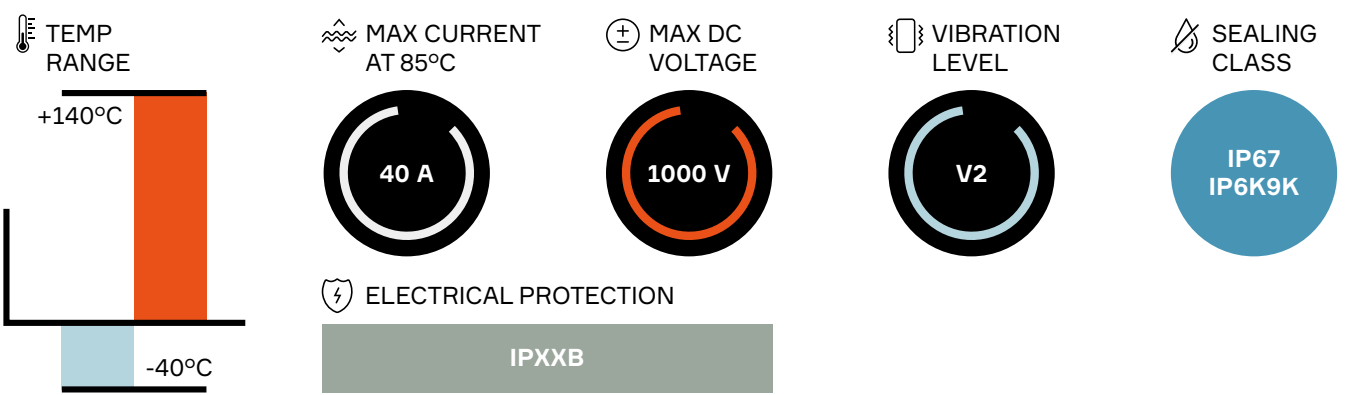
APPLICATIONS

- Air Conditioning
- PTC Heater
- On-board charger (OBC)
- DC/DC

AVAILABLE CONFIGURATIONS

Connector Type	Wire-to-device
Cable Exit Orientation	180°
Cable Range (mm²)	3 / 4 / 5
Terminal Type	2.8 mm Blade Contact
# of Cavities	2
Shielding	Individual
HVIL	Shunt
Assembly Assurance	CPA
Number of Indexes	5

PERFORMANCE

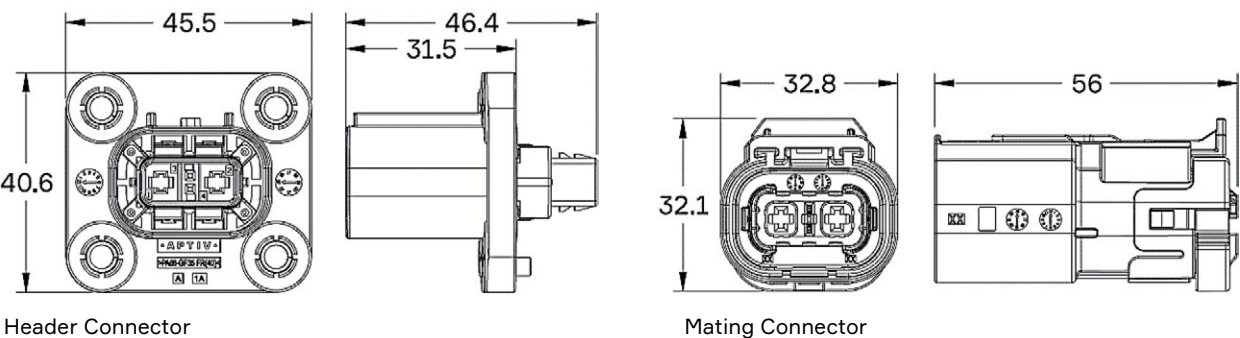


Index	Header connector	Mating Connector – Individually Shielded	BOM
A	35149836	35206206	1
B	35149837	35206207	
C	35149838	35206208	
D	35149839	35206209	
E	35149840	35206210	

ASSOCIATED PARTS

Part number			Description	BOM
Header				
35194900 Ag plated 33401022 Sn plated			DCS-2 2.8 Male Terminal	2
15540349 Ag plated 13580633 Sn plated			MTS-II 0.64 Female Terminal 0.25 - 0.35 mm²	2
15540356 Ag plated 13580635 Sn plated				
35149868			TPA	1
Mating connector				
3 mm² Cable	4 mm² Cable	5 mm² Cable		
13882331 Ag plated 13943933 Sn plated			CTS 2.8 Female Terminal	2
33522728 Ag plated 13780621 Sn plated			DCK 2.8 Female Terminal	
35226475	35230979	35230980	Outer Ferrule	2
35242858	35236785	35236786	Inner Ferrule	2
35240442	35230976	35206307	Cable Seal	1
35242833	35206310	35208801	Cable Strain Relief	1

DIMENSION MEASUREMENT SAMPLE



Part numbers, specifications, dimensions and performance data in this document are for general references only and are subject to change without notice. To verify product information, please contact an Aptiv representative.

SHIELDPACK™

HV AK CLASS 1 SMU 2 AND 3 WAY AK



BENEFITS

- Standard AK interface
- High vibrations and operating temperatures
- Multiple layouts & HVIL options in the same interface

FEATURES

- Designed according to AK interface specification and LV215 latest revision
- Finger proof/touch safe
- Multicore shielded cable for wiring simplification
- Fully interchangeable with other AK supplier sources

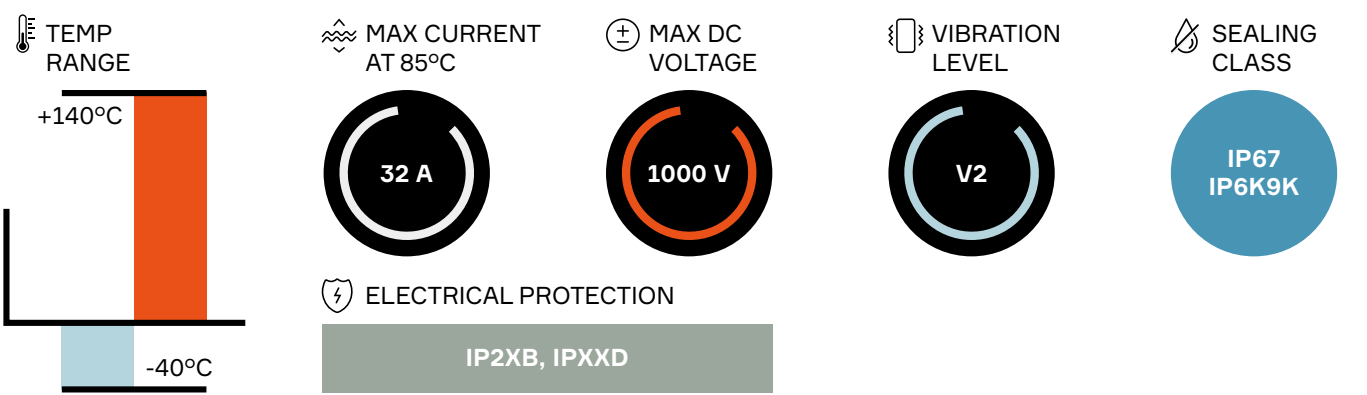
APPLICATIONS

- Battery pack
- DC / DC converter
- Electric AC
- PTC heater
- HV PDU
- On-board charger (OBC)

AVAILABLE CONFIGURATIONS

Connector Type	Wire-to-device
Cable Exit Orientation	180°
Cable Range (mm²)	2.5 - 4 (power) 0.5 - 0.75 (HVIL)
Terminal Type (mm)	2.8
# of Power Terminals	2
Shielding	Multicore
HVIL	Shunt on female or inline
Assembly Assurance	CPA/TPA
Number of Indexes	5

PERFORMANCE



Code	Header 2 way	Header 3 way	Mating outer housing	BOM
A	35149836	35149842	33372017	1
B	35149837	35149843	33372014	
C	35149838	35149844	33372016	
D	35149839	35149845	33372015	
E	35149840	35149846	35061103	

ASSOCIATED PARTS

Part number	Description	BOM		
		2 way, HVIL pass-through	2 way, HVIL shunt	3 way
Header				
35194900	DCS-2 2.8 male unsealed terminal 2.5-4 mm² Ag	2	2	3
35149868	TPA (Terminal Position Assurance) 2 way	1	1	-
35149869	TPA (Terminal Position Assurance) 3 way	-	-	1
15540356	MTS 0.64 female terminal 0.5-0.75 mm² Ag	2	2	-
Mating Connector				
13799603	CTS 2.8 female terminal 2.5 mm² Ag	2	2	3
13882331	CTS 2.8 female terminal 4 mm² Ag			
33504709	HVIL male DuoTwin 0.64 0.5 mm² Ag	2	-	-
35174268	Spacer	1	1	1
35174446	Shielding	2	2	2
35174249	Cable strain relief 3 x 2.5 mm²	-	-	1
35174250	Cable seal 3 x 2.5 mm²	-	-	1
35174511	Inner housing 2 way	1	-	-
35174507	Cable strain relief 2 x 4.0 mm²	-	1	-
35174508	Cable seal 2 x 4.0 mm²	1	1	-
35174280	Inner ferrule	1	1	1
35174278	Outer ferrule	1	1	1
35174509	Inner housing sub-assembly	-	1	-
35174448	Inner housing 3 way	-	-	1
35174513	TPA (Terminal Position Assurance)	1	-	-
35174510	Cable strain relief 2 x 4.0 + 2 x 0.5 mm²	1	-	-

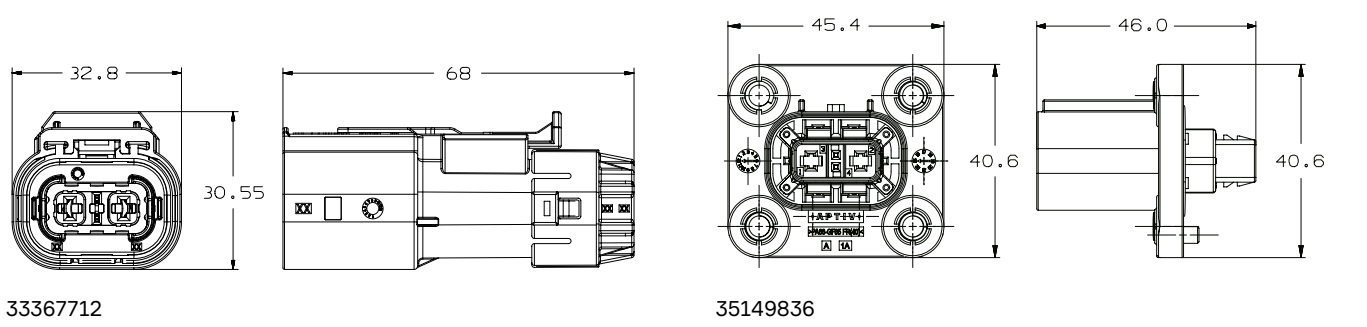
* Both DCK terminals and CTS terminals are compatible.

Component Kits**

Part number	Description (pass-through version)	Part number	Description (shunted version)
35122237	2 x 4 mm² + 2 x 0.5 mm² cable code A	33367712	2 x 4 mm² cable code A
35122238	2 x 4 mm² + 2 x 0.5 mm² cable code B	35122240	2 x 4 mm² cable code B
33367711	2 x 4 mm² + 2 x 0.5 mm² cable code C	35122241	2 x 4 mm² cable code C
35122239	2 x 4 mm² + 2 x 0.5 mm² cable code D	33367710	2 x 4 mm² cable code D
35086591	2 x 4 mm² + 2 x 0.5 mm² cable code E	35086590	2 x 4 mm² cable code E

** Available configurations with associated BOM (Bill Of Materials).

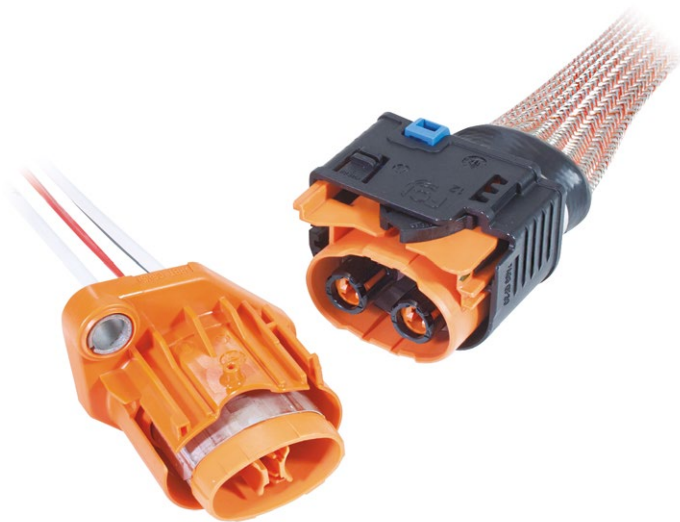
DIMENSION MEASUREMENT SAMPLE



Part numbers, specifications, dimensions and performance data in this document are for general references only and are subject to change without notice. To verify product information, please contact an Aptiv representative.

SHIELDPACK™

HV APEX280 SB 2 WAY



BENEFITS

- Two-stage disconnect for safe unmating
- Compact package with unique integrated electric interlock
- Header is sealed in both mated and unmated position

FEATURES

- Bundle shielding with external braid
- HVIL shunted in harness connector

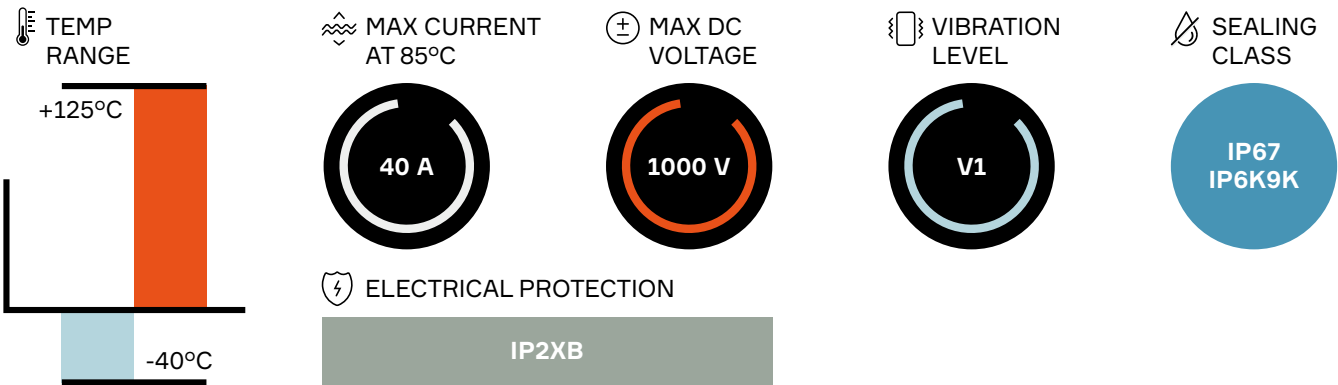
APPLICATIONS

- Battery pack
- DC / DC converter
- On-board charger (OBC)

AVAILABLE CONFIGURATIONS

Connector Type	Wire-to-device
Cable Exit Orientation	180°
Cable Range (mm²)	2.5 - 6 (power) 0.5 - 0.75 (HVIL)
Terminal Type	APEX® 2.8
# of Power Terminals	2
Shielding	Bundle
HVIL	Shunt on female
Assembly Assurance	CPA
Number of Indexes	2

PERFORMANCE

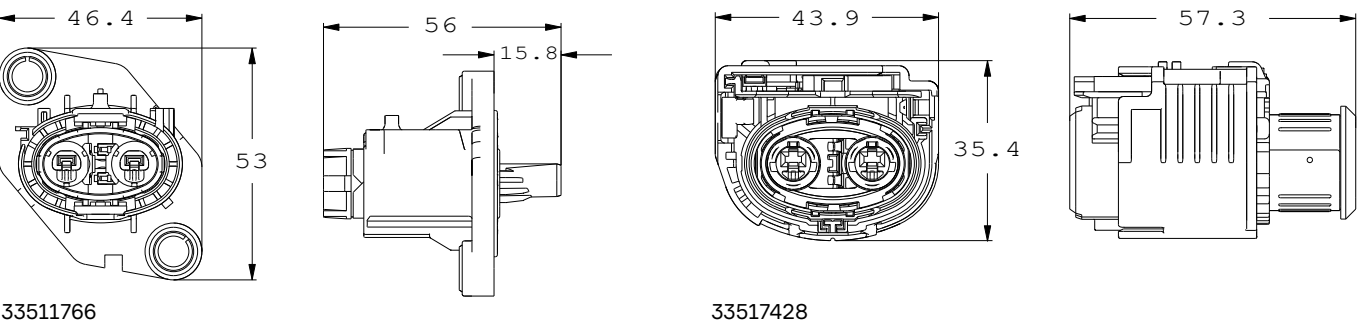


Index	Header connector	Mating connector	BOM
101	33511766	33517428	1
102	33511767	33511765	

ASSOCIATED PARTS

Part number	Description	BOM
Header		
15509074	APEX® 2.8 male terminal 2.5 mm²	2
15516298	APEX® 2.8 male terminal 4 - 6 mm²	
33511802	DCS2 1.5 male terminal gold-plated 0.22 - 0.35 mm²	2
10779703	DCS2 1.5 male terminal gold-plated 0.5 - 1 mm²	
Mating connector		
13627267	APEX® 2.8 female terminal 2.5 mm²	2
10810733	APEX® 2.8 female terminal 4 - 6 mm²	
Seals		
33512180	Header and mating: APEX® 2.8 female & male single wire seal 2.5 mm²	2
33512175	Header and mating: APEX® 2.8 female & male single wire seal red 4 mm²	
35289308	Header and mating: APEX® 2.8 female & male single wire seal 6 mm²	
15441379	Header: DCS/DSQ 1.5 red single wire seal 0.22 - 0.5 mm²	2
15441380	Header: DCS/DSQ 1.5 grey single wire seal 0.75 - 1 mm²	

DIMENSION MEASUREMENT SAMPLE



SHIELDPACK™

HV CTS280 SI 4 WAY



BENEFITS

- No mechanical assist needed for mating
- Compact system design with integrated HVIL
- Robust error-proof assembly and system mating

FEATURES

- Tool-less unmating system
- Finger proof/touch safe
- 4 power circuits
- Panel mount to device with face seal (on wire-to-device)
- Aluminum compression bushings
- Internal HVIL (shunted in harness connector)
- ISO cable compatible

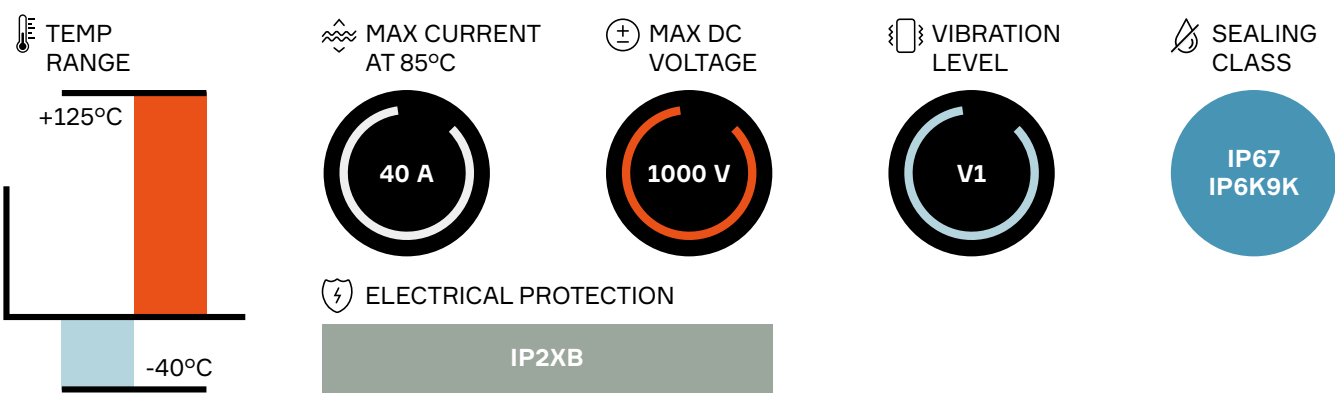
APPLICATIONS

- Battery pack
- DC / DC converter
- On-board charger (OBC)

AVAILABLE CONFIGURATIONS

Connector Type	Wire-to-device
Cable Exit Orientation	180°
Cable Range (mm²)	3 - 5 (power) 0.5 - 0.75 mm (HVIL)
Terminal Type	CTS 2.8
# of Power Terminals	4
Shielding	Individual
HVIL	Shunt on female
Assembly Assurance	CPA
Number of Indexes	2

PERFORMANCE

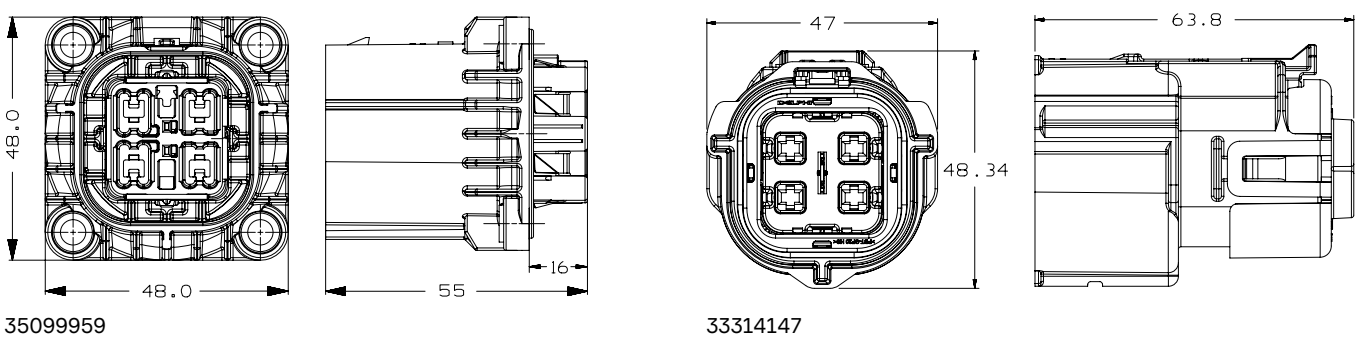


Index	Header outer	Header inner connector	Mating connector	BOM
101	35099959	35099976	33314147	1
102	35161787	35149737	33314148	

ASSOCIATED PARTS

Part number	Description	BOM
Header		
13597855	MTS 0.64 HVIL female terminal 0.5 - 0.75 mm	2
13753471	CTS 2.8 male terminal 3 - 5 mm²	4
13790534	CTS 2.8 male terminal 4 - 5 mm²	
33314145	TPA (Terminal Position Assurance)	2
Mating Connector		
13882331	CTS 2.8 female terminal 3 - 5 mm²	4
13737699	Inner ferrule 3 mm² ISO cable	4
33292550	Inner ferrule 5 mm² ISO cable	
13737702	Outer ferrule 3 mm² ISO cable	4
33292551	Outer ferrule 5 mm² ISO cable	
35072736	Female mat seal 3 mm²	1
35072735	Female mat seal 5 mm²	
35072739	Mat seal retainer 3 mm²	1
35072738	Mat seal retainer 5 mm²	

DIMENSION MEASUREMENT SAMPLE



SHIELDPACK™

HV APEX280 SI 4 WAY



BENEFITS

- High endurance against vibration
- Compliant to LV standard

FEATURES

- 280 terminal system & 0.64 HVIL
- Flammability grade UL94 V0
- Sealing: IP6K9K , IP67, IPXXB, IPXXD (mated)

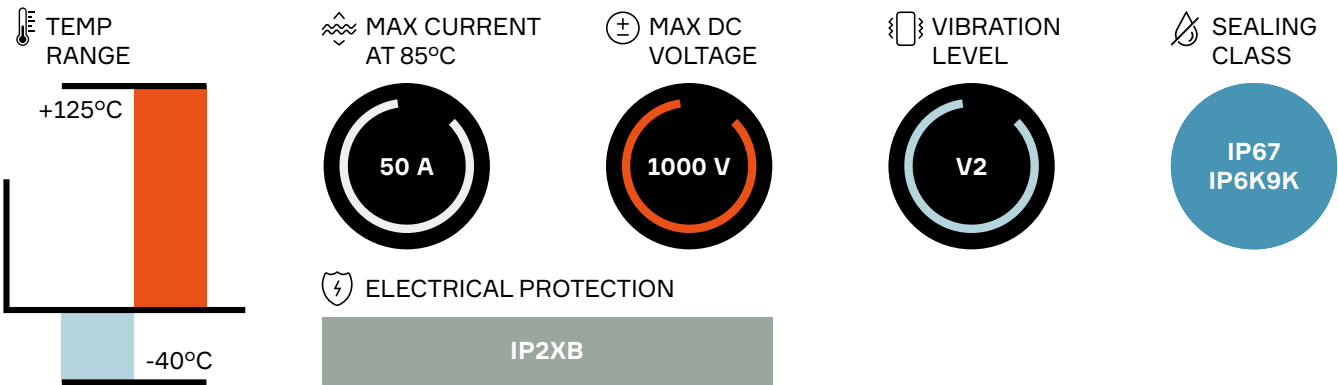
APPLICATIONS

- Electric AC
- HV Heater
- OBC/Auxiliary Devices

AVAILABLE CONFIGURATIONS

Connector Type	Wire-to-device
Cable Exit Orientation	90°/180°
Cable Range (mm²)	2.5-6
Terminal Type	APEX® 2.8
# of Power Terminals	4
Shielding	Individual
HVIL	Shunt on female
Assembly Assurance	CPA/TPA
Number of Indexes	4
Header footprint 90deg (l*w*h)	54.8*50.9*54.7
Header footprint 180deg (l*w*h)	46*46*40.4

PERFORMANCE



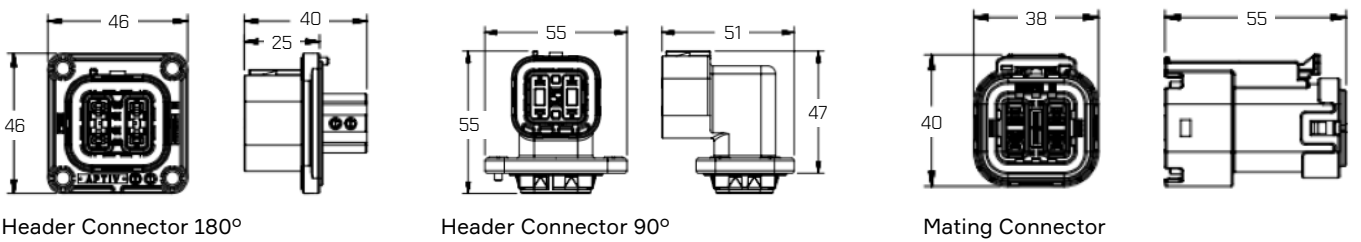
CONNECTOR PART NUMBERS

Index	Header connector 90°	Header connector inner housing 90°	Header connector 180°	Header connector inner housing 180°	Mating connector	BOM
A	35607793	35607811	35607572	35607604	35607516	1
B	35607794	35607812	35607573	35607605	35607517	1
C	35607795	35607813	35607574	35607606	35607519	1
D	35607796	35607814	35607576	35607607	35607521	1

ASSOCIATED PARTS

Part number				Description	BOM
Header 90°					
10762803				APEX® 2.8 female terminal Sn plated unsealed 1.5 - 2.5 mm²	4
33370369				APEX® 2.8 female terminal Ag plated unsealed 4 - 6 mm²	4
13959131				CTS 1.2 female terminal	2
Header 180°					
15516298				APEX® 2.8 male terminal 4 - 6 mm² unsealed, Ag plating	4
13959131				CTS 1.2 female terminal	2
Mating Connector					
2.5 mm²	4 mm²	5 mm²	6 mm²		
35663483	35607547	35607548	35607549	Inner Ferrule	4
35663486	35607551	35607553	35607554	Outer Ferrule	4
35663718	35607557	35607558	35607559	Cable seal	4
35663719	35607561	35607562	35607563	Cable retainer	4
10762803				APEX® 2.8 female terminal Ag plated unsealed 1.5 - 2.5 mm²	4
33370369				APEX® 2.8 female terminal Ag plated unsealed 4 - 6 mm²	4

DIMENSION MEASUREMENT SAMPLE



SHIELDPACK™

HV CTS630 SI 2 WAY



HV630 Header and Mating connector

BENEFITS

- Inner connector with TPA can be plugged into header during device assembly (on wire-to-device)
- Industry's most compact 630 2 way system
- Industry leading vibration performance
- External header housing is the same for the HV280 and HV630

FEATURES

- Tool-less unmating system
- Finger proof/touch safe
- Panel mount to device with face seal (on wire-to-device)
- Aluminum compression bushings
- ISO cable compatible
- Secondary terminal locking

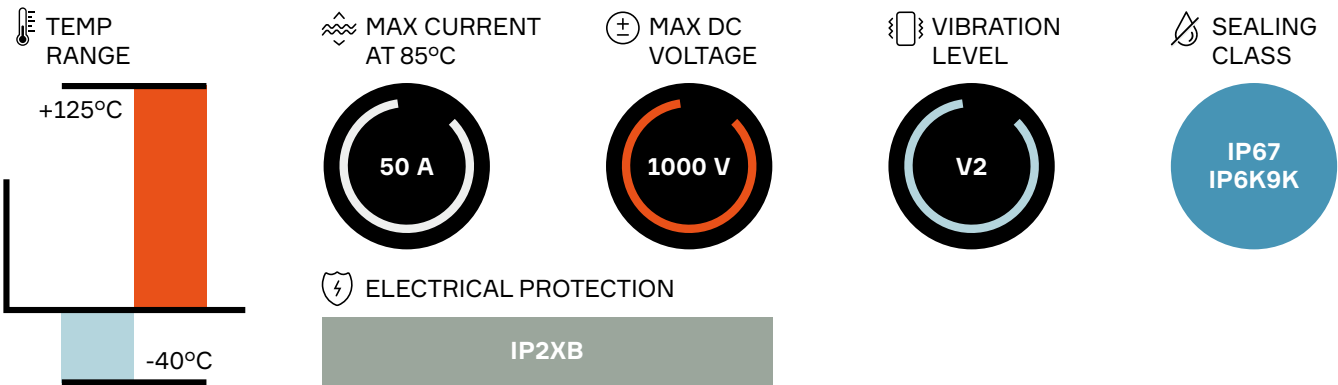
APPLICATIONS

- Battery pack
- DC / DC converter
- On-board charger (OBC)

AVAILABLE CONFIGURATIONS

Connector Type	Wire-to-device, wire-to-wire
Cable Exit Orientation	180°
Cable Range (mm²)	3 - 6 (power)
Terminal Type	CTS 6.3
# of Power Terminals	2
Shielding Type	Individual
HVIL	None
Assembly Assurance	TPA (wire-to-device) CPA (wire-to-wire)
Number of Indexes	3 (wire-to-device) 3 (wire-to-wire)

PERFORMANCE

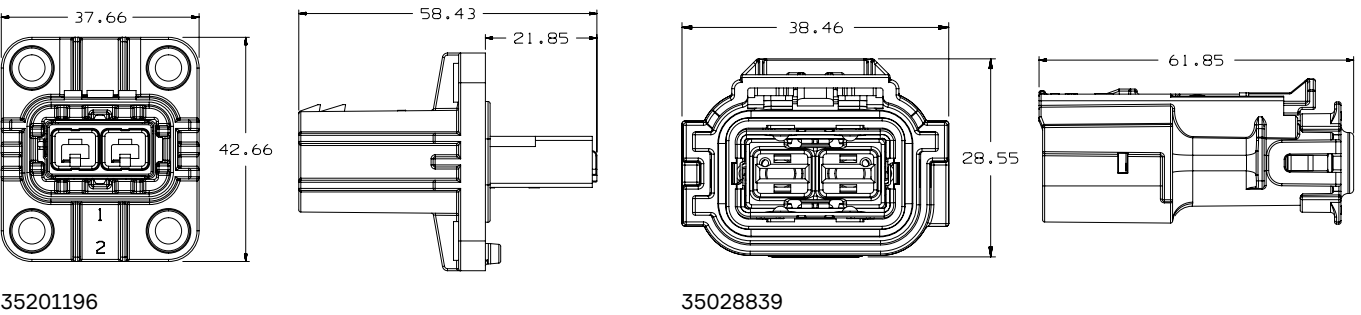


Index	Header outer	Header inner connector	Inline connector	Mating connector	BOM
101	35201196	35028833	35201706	35028839	1
102	35201197	35028834	35201707	35028840	
103	35201198	35028835	35201708	35028841	

ASSOCIATED PARTS

Part number	Description	BOM
Header		
33375907	4.8 Male terminal 3 - 6 mm²	2
35028830	TPA (Terminal Position Assurance)	1
Inline connector		
35063063	4.8 male terminal	2
Mating connector		
13984307	Female CTS 6.3 terminal 3 - 6 mm²	2
13737699	Inner ferrule 3 mm² cable	2
13737700	Inner ferrule 4 mm² cable	
33292550	Inner ferrule 5 mm² & 6 mm² cable	
13737702	Outer ferrule 3 mm² & 4 mm² cable	2
33292551	Outer ferrule 5 mm² & 6 mm² cable	
13824779	Seal retainers 3 mm² & 4 mm² cable	
13888072	Seal retainers 5 mm² & 6 mm² cable	1
15513453	Cable seal 3 mm² cable	1
15513452	Cable seal 4 mm² cable	
15513451	Cable seal 5 mm² & 6 mm² cable	

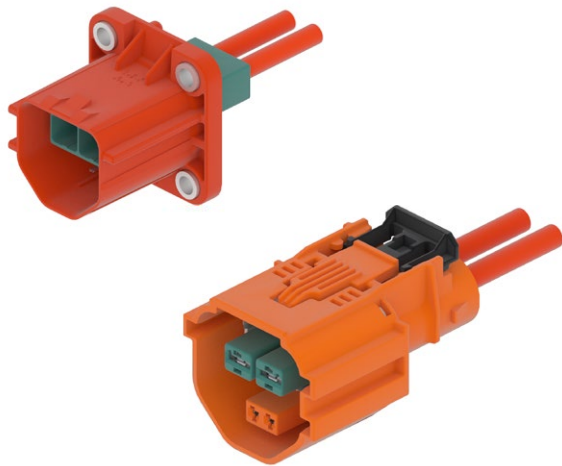
DIMENSION MEASUREMENT SAMPLE



Part numbers, specifications, dimensions and performance data in this document are for general references only and are subject to change without notice. To verify product information, please contact an Aptiv representative.

SHIELDPACK™

HV630 HVIL SI 2 WAY



BENEFITS

- Inner connector with TPA can be plugged into header during device assembly (on wire-to-device)
- Industry leading vibration performance

FEATURES

- Tool-less unmating system
- Finger proof/touch safe
- Panel mount to device with face seal (on wire-to-device)
- Aluminum compression bushings
- ISO cable compatible
- Secondary terminal locking

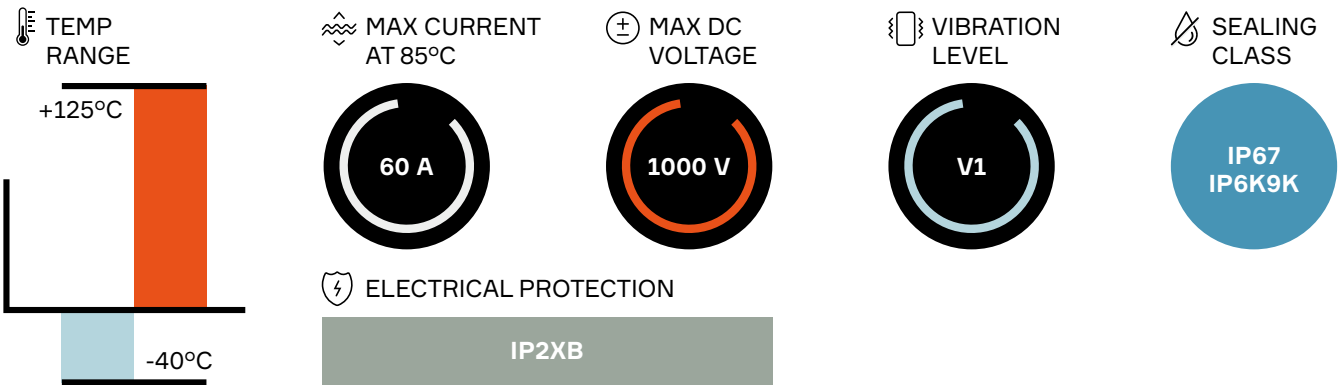
APPLICATIONS

- Battery pack
- DC / DC converter
- On-board charger (OBC)
- Auxiliary loads

AVAILABLE CONFIGURATIONS

Connector Type	Wire-to-device
Cable Exit Orientation	180°
Cable Range (mm²)	3 - 6
Terminal Type	CTS 6.3
# of Power Terminals	2
Shielding Type	Single conductor shielded cable
HVIL	Pass through / Shunt on header
Assembly Assurance	CPA
Number of Indexes	1

PERFORMANCE



CONNECTOR PART NUMBERS

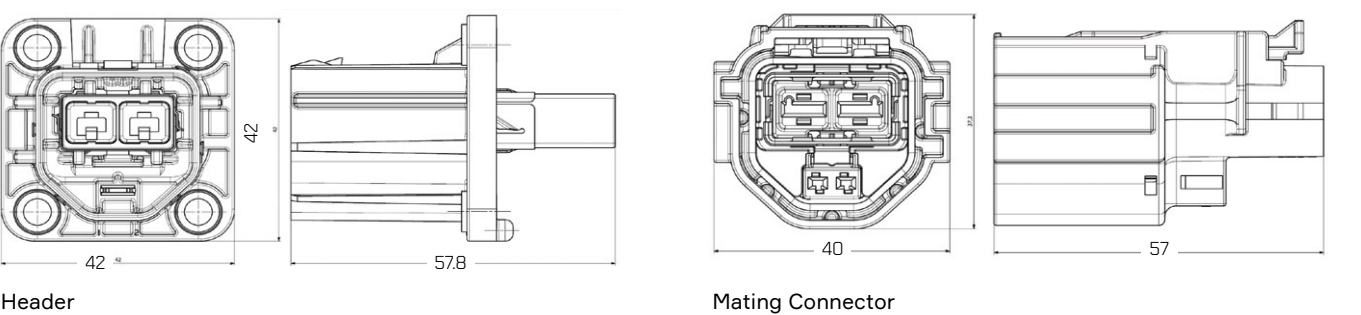
Code	Header connector	HVIL Type	Header inner connector	Mating connector	BOM
101	35447175	HVIL Pass Through	35327273	35578206	1
101	35372303	Shunt on Header			1

ASSOCIATED PARTS

Part number	Description	BOM
Header		
35028830	TPA (Terminal Position Assurance)	1
35446700*	4.8 Male Terminal 4 - 6 mm²	2
15396712**	HVIL Male Terminal TTS 1.5, 0.5 - 0.75 mm²	2
Mating connector		
13824779	Secondary Lock	1
15513451	Seal Cable 5 - 6 mm²	1
13984307	CTS 6.3 Female Terminal 4 - 6 mm²	2
15432210	Female HVIL 150 Terminal 0.5 - 1 mm²	2
35371916	HVIL Cover	1
33292551	Outer Ferrule 5 - 6mm²	2
33292550	Inner Ferrule 5 - 6mm²	2

* Non Aptiv terminal, please consult us.
** Only used for HVIL Pass Through Header

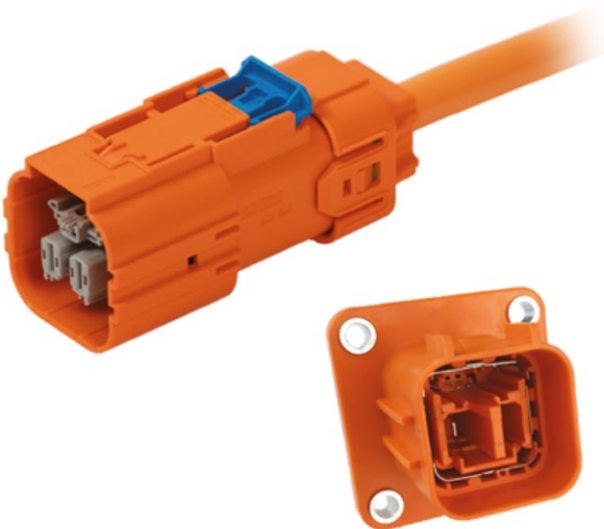
DIMENSION MEASUREMENT SAMPLE



Part numbers, specifications, dimensions and performance data in this document are for general references only and are subject to change without notice. To verify product information, please contact an Aptiv representative.

SHIELDPACK™

HV AK CLASS 2 SMU 2 WAY



BENEFITS

- High operating temperature
- High robustness against vibrations
- Standard AK interface
- No mechanical assist required thanks to low insertion force

FEATURES

- For applications with needs up to 55A
- Compliant to LV214 / LV215
- Tool-less mating & un-mating system
- Patented squeezing fixture for enhanced anti-vibration performance

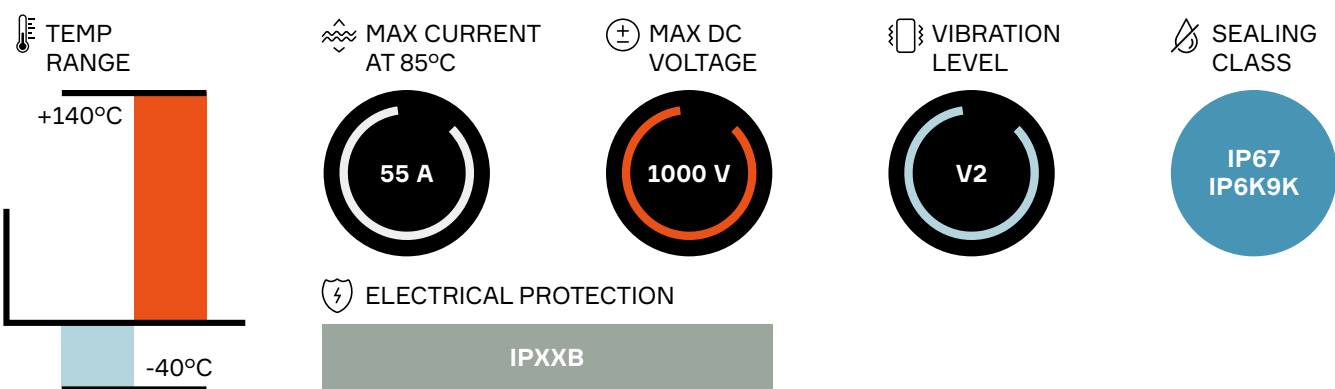
APPLICATIONS

- Air Conditioning
- PTC Heater
- On-board charger (OBC)
- DC/DC

AVAILABLE CONFIGURATIONS

Connector Type	Wire-to-device
Cable Exit Orientation	180°
Cable Range (mm²)	4 - 6
Terminal Type	6.3 mm Blade Contact
# of Cavities	2
Shielding	Multicore
HVIL	Shunt
Assembly Assurance	CPA
# of Code Indexes	2

PERFORMANCE



Index	Header Connector	Mating Connector	BOM
A	35116365	35230055	1
B	35169586	35230056	

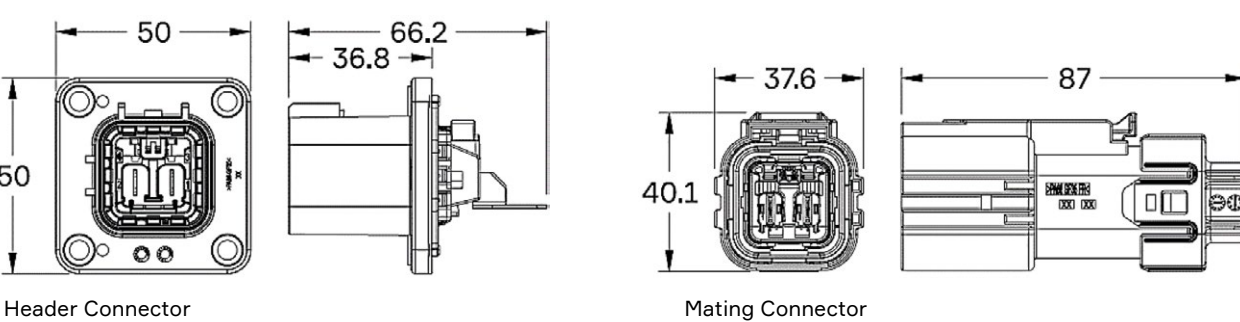
Additional codes are offered on demand. Contact an Aptiv representative for details.
Header connector can be customized for outlet and assembled HVIL harness. Contact Aptiv engineering for details.

ASSOCIATED PARTS

Part number		Description	BOM
Header connector			
13952636*		1.2 Male Terminal 0.5 - 0.75 mm²	2
Mating connector			
2 × 4 mm² Cable	2 × 6 mm² Cable	CTS 6.3 Female Terminal	2
13984302 Ag plated	13984307 Ag plated		1
13976101 Sn plated	13976102 Sn plated		1
35196906		HVIL Shunt Harness	1
35174280	35200703	Inner Ferrule	1
35200704	35200705	Outer Ferrule	2
35200706	35200707	EMC Shield	1
35230073		Inner Housing	1
35200700	35200701	Cable Seal	1
35230068	35230069	Cable Strain Relief	

* Non Aptiv terminal, please consult us.

DIMENSION MEASUREMENT SAMPLE



Part numbers, specifications, dimensions and performance data in this document are for general references only and are subject to change without notice.
To verify product information, please contact an Aptiv representative.

SHIELDPACK™

HV CTS630 SI 4 WAY



BENEFITS

- Inner connector with TPA can be plugged into header during device assembly (on wire-to-device)
- Industry leading vibration performance
- External header housing is the same for the HV280 and HV630

FEATURES

- Tool-less unmating system
- Finger proof/touch safe
- Panel mount to device with face seal (on wire-to-device)
- Aluminum compression bushings
- ISO cable compatible
- Secondary terminal locking

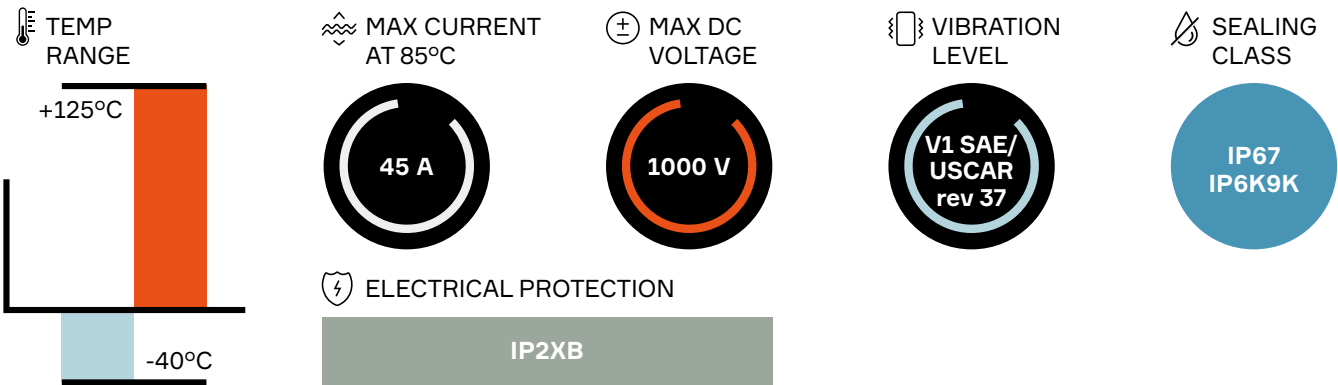
APPLICATIONS

- Battery pack
- DC / DC converter
- On-board charger (OBC)
- Auxiliary loads

AVAILABLE CONFIGURATIONS

Connector Type	Wire-to-device
Cable Exit Orientation	180°
Cable Range (mm²)	5
Terminal Type	CTS 6.3
# of Power Terminals	4
Shielding Type	Single conductor shielded cable
HVIL	None
Assembly Assurance	CPA
Number of Indexes	1

PERFORMANCE

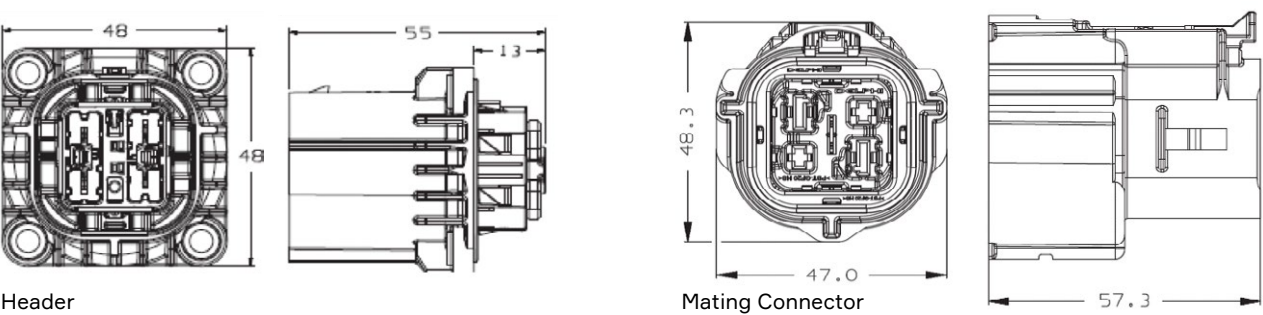


Index	Header outer	Header inner connector	Mating connector	BOM
101	33300632	35448103	35448131	1

ASSOCIATED PARTS

Part number	Description	BOM
Header		
35448129	TPA	1
35446700	CTS 6.3 Male Terminal 5 mm²	4
Mating connector		
13984307	CTS 6.3 Female Terminal 5 mm²	4
33292550	Inner Ferrule 5 mm² ISO cable	4
33292551	Outer Ferrule 5 mm² ISO cable	4
35072735	Female mat seal 5 mm²	1
35072738	Mat Seal Retainer 5 mm²	1

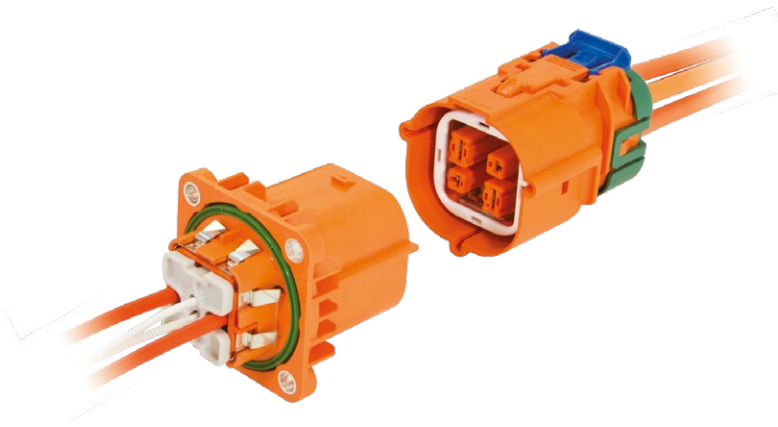
DIMENSION MEASUREMENT SAMPLE



Part numbers, specifications, dimensions and performance data in this document are for general references only and are subject to change without notice. To verify product information, please contact an Aptiv representative.

SHIELDPACK™

HV CTS280/630 SI SPLICE 4 WAY



BENEFITS

- Removes splices from the wiring harness and integrates splicing capabilities into connector
- No mechanical assist needed for mating

FEATURES

- Tool-less unmating system
- Finger proof/touch safe
- Panel mount to device with face seal
- Aluminum compression bushings
- Internal HVIL (shunted in harness connector)
- ISO cable compatible

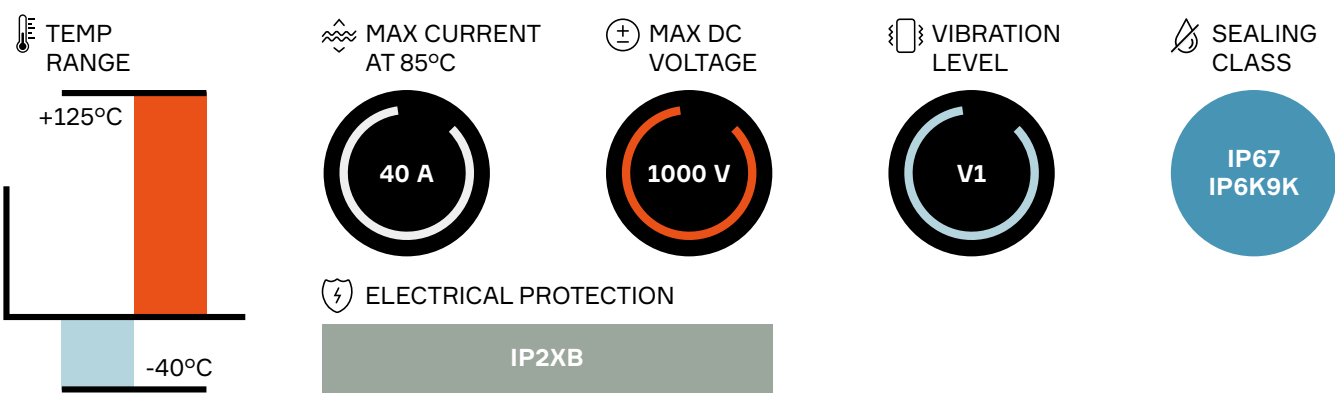
APPLICATIONS

Splicing accessory loads

AVAILABLE CONFIGURATIONS

Connector Type	Wire-to-device
Cable Exit Orientation	180°
Cable Range (mm²)	3 - 5 (power) 0.5 - 0.75 (HVIL)
Terminal type	CTS 2.8(2) / 6.3(2)
# of Power Terminals	4
Shielding	Individual
HVIL	Shunt on female
Assembly Assurance	CPA
Number of Indexes	2

PERFORMANCE

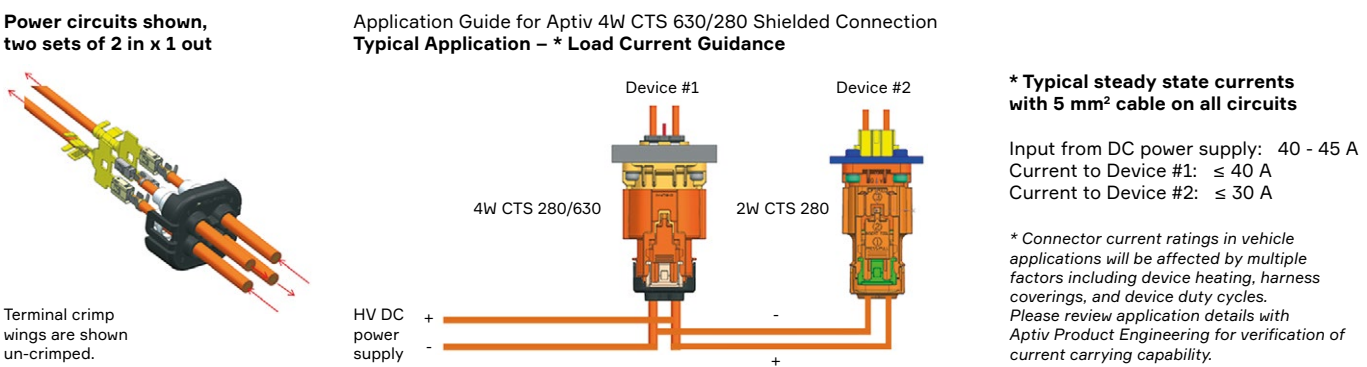


Index	Header outer	Header inner connector	Mating connector	BOM
101	33300632	33311166	33300634	1
102	33300633	33311167	33300635	

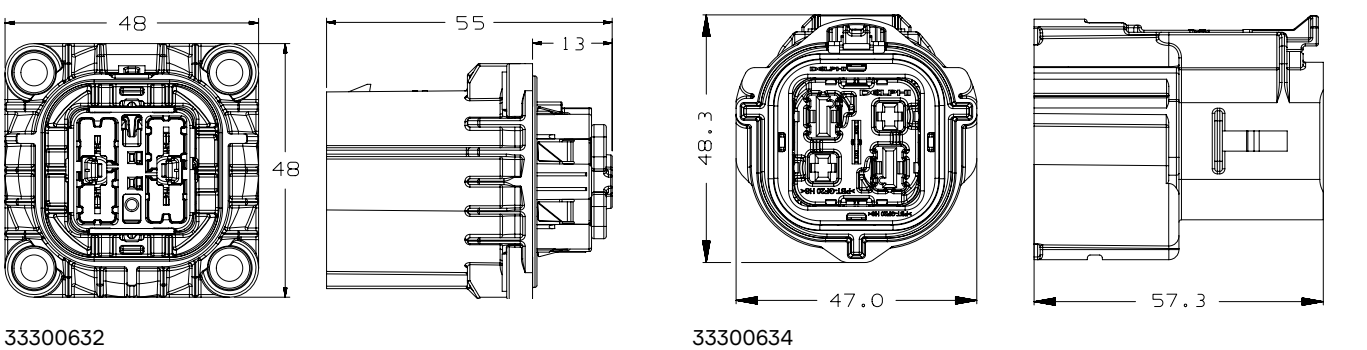
ASSOCIATED PARTS

Part number	Description	BOM
Header		
13597855	MTS 0.64 HVIL female terminal 0.5 - 0.75 mm²	2
33299800	630/280 male terminal 3 - 5 mm²	2
33299799	TPA (Terminal Position Assurance)	2
Mating Connector		
13882331	CTS 2.8 female terminal 3 - 5 mm²	2
13984302	CTS 6.3 female terminal 2.5 - 4 mm²	
13984307	CTS 6.3 female terminal 4 - 6 mm²	
13737699	Inner ferrule 3 mm² ISO cable	4
33292550	Inner ferrule 5 mm² ISO cable	
13737702	Outer ferrule 3 mm² ISO cable	4
33292551	Outer ferrule 5 mm² ISO cable	
35072736	Female mat seal 3 mm²	1
35072735	Female mat seal 5 mm²	
35072739	Mat seal retainer 3 mm²	1
35072738	Mat seal retainer 5 mm²	

APPLICATION GUIDE



DIMENSION MEASUREMENT SAMPLE



Part numbers, specifications, dimensions and performance data in this document are for general references only and are subject to change without notice. To verify product information, please contact an Aptiv representative.

POWERPACK

HV HES240 UI OBC 4 WAY



BENEFITS

- Field proven technology widely used across electrification market
- Configurable for both 1-phase and 3-phase applications
- Compact packaging

FEATURES

- Finger proof/touch safe
- Capability for 4 power circuits and 2 signal circuits
- Unshielded system with terminal spacing for HV applications
- One-stage locking system with CPA
- Aluminum compression bushings

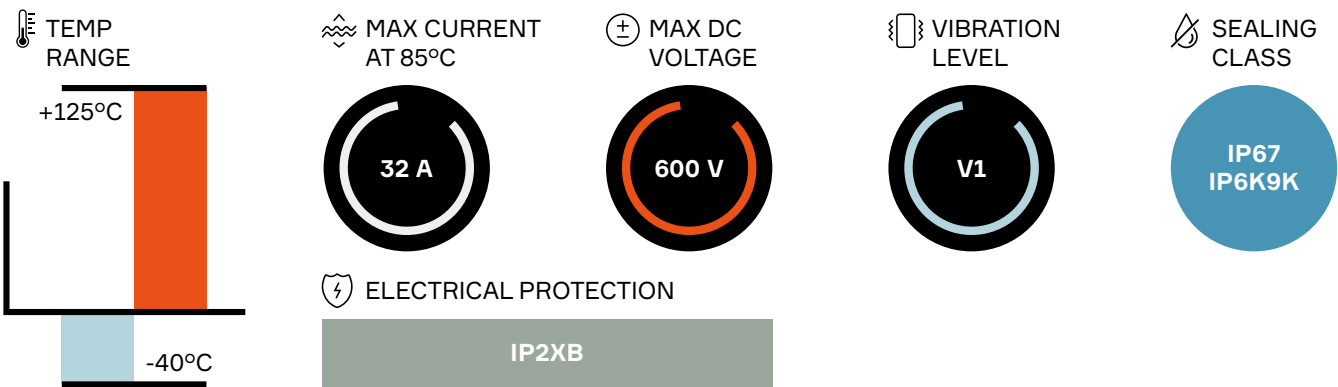
APPLICATIONS

On-board charger (OBC)

AVAILABLE CONFIGURATIONS

Connector Type	Wire-to-device, wire-to-wire
Cable Exit Orientation	180°
Cable Range (mm²)	3 - 6 (power) 0.75 - 1 (HVIL)
Terminal Type	HES 1.0 (signal) HES 2.4 (power)
# of Power Terminals	4 (2 signal terminals)
Shielding Type	Unshielded
HVIL	None
Assembly Assurance	CPA
Number of Indexes	2

PERFORMANCE



6 Way Device Connection System

Header connector	Mating connector		BOM
	16A	32A	
33229378	13879051 (2+2)	13879048 (2+2)	1
	15525754 (3+0)	15525753 (3+0)	
	13879050 (3+2)	13879047 (3+2)	
	13879049 (4+2)	13879046 (4+2)	

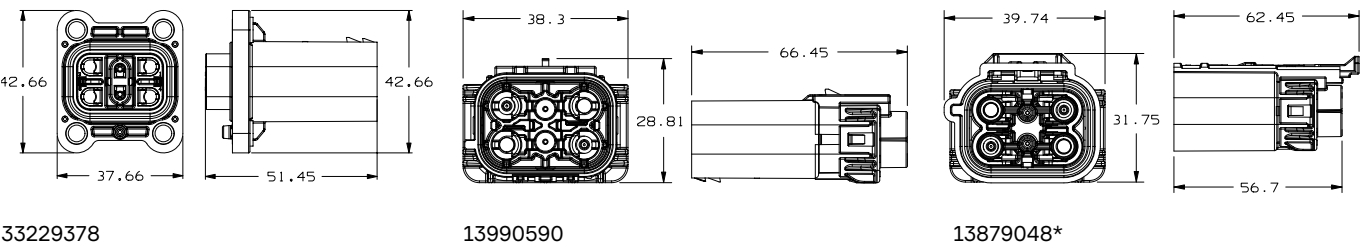
6 Way Inline Connection System

Male inline 16A	Male inline 32A	Mating connector	
		16A	32A
13990593 (2+2)	13990590 (2+2)	13879051 (2+2)	13879048 (2+2)
13990591 (4+2)	13990588 (4+2)	13879049 (4+2)	13879046 (4+2)

ASSOCIATED PARTS

Part number	Description	BOM
Header / Male inline		
13711549	1.0 HES gold-plated 0.75 - 1 mm²	2 or 4
13783283	2.4 HES gold-plated 2 - 3 mm²	2, 3, or 4
13783284	2.4 HES gold-plated 4 - 6 mm²	
Mating connector		
13711549	1.0 HES gold-plated 0.75 - 1 mm²	2 or 4
13955307	2.4 HES gold-plated 2 - 3 mm²	2, 3, or 4
13955308	2.4 HES gold-plated 4 - 6 mm²	

DIMENSION MEASUREMENT SAMPLE

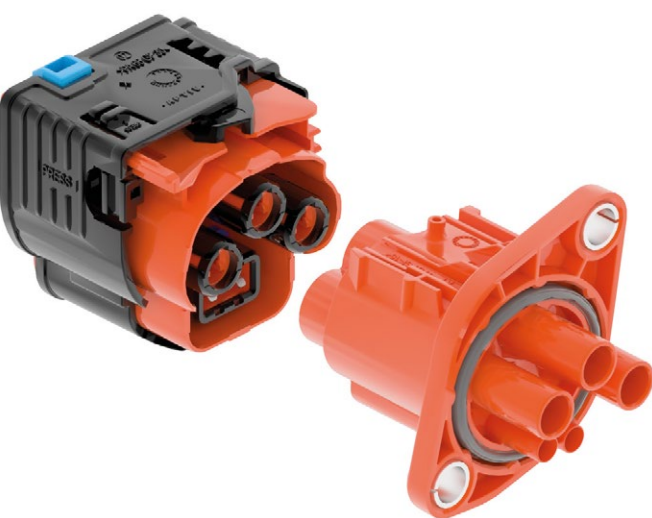


* Female connector is compatible with both device & inline male connectors.

Part numbers, specifications, dimensions and performance data in this document are for general references only and are subject to change without notice. To verify product information, please contact an Aptiv representative.

POWERPACK

HV APEX280 UI OBC 3 WAY



BENEFITS

- Optimized for 40A on-board charging solutions using 6 mm² cable range
- Robust and field proven APEX® 2.8 terminal technology
- Best in class safety and ergonomics in a compact package

FEATURES

- Compact two-piece design
- Robust connection: 3.9G vibration, 125°C temp range
- Easy mating ErgoMate™ system
- HVIL shunt on female connector

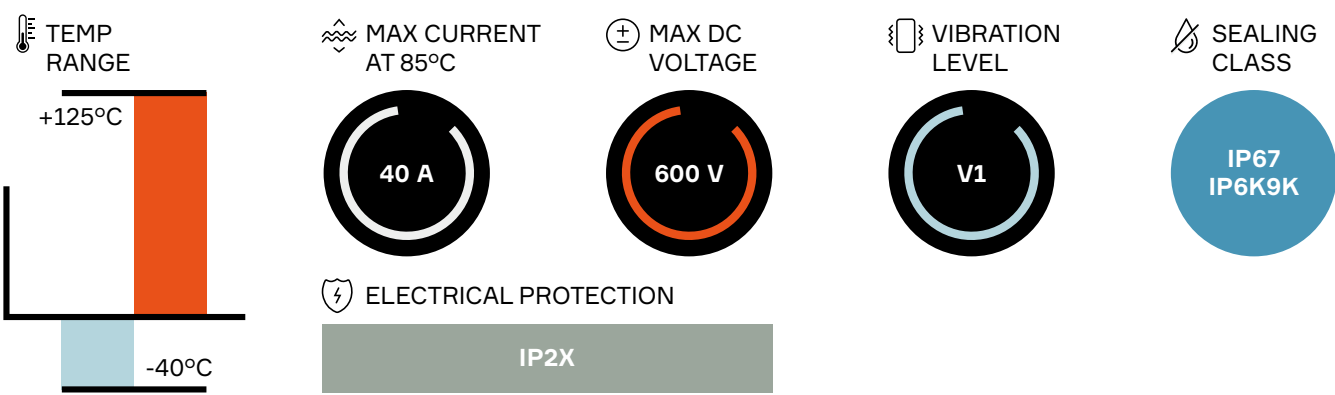
APPLICATIONS

Inlet LV, On-board charger (OBC)

AVAILABLE CONFIGURATIONS

Connector Type	Wire-to-device
Cable Exit Orientation	180°
Cable Range (mm ²)	6
Terminal Type	APEX® 2.8
# of Power Terminals	3
Shielding Type	Unshielded
HVIL	Shunt on female
Assembly Assurance	CPA
Number of Indexes	1

PERFORMANCE

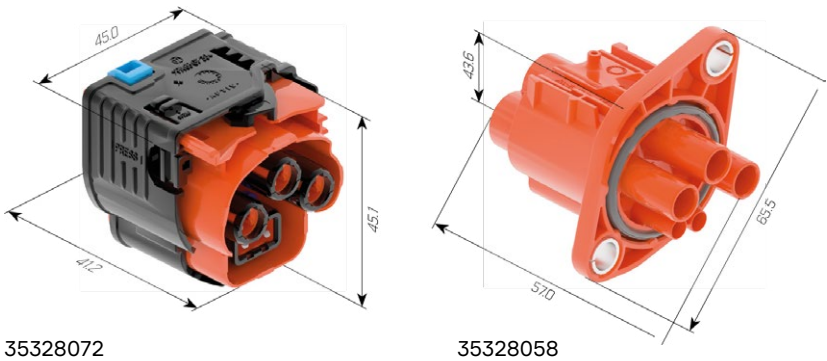


Header connector	Mating connector	BOM
35328058	35328072	1

ASSOCIATED PARTS

Part number	Description	BOM
Header		
15516298	APEX® 2.8 male tinned terminal 4 - 6 mm²	3
33511802	DCS2 1.5 male terminal gold-plated 0.22 - 0.35 mm²	2
10779703	DCS2 1.5 male terminal gold-plated 0.5 - 1 mm²	
Mating connector		
10810733	APEX® 2.8 female tinned terminal 4 - 6 mm²	3
Seals		
15324981	Single wire seal blue (for JASO wire: EEX, EEHX, EEHX-BSX)	6
12186636	Single wire seal white (for ISO thin wall cable)	6
15441379	Single wire seal red 0.35 - 0.5 mm²	2
15441380	Single wire seal grey 0.75 - 1 mm²	
35453673	Protective cover	1

DIMENSION MEASUREMENT SAMPLE



Part numbers, specifications, dimensions and performance data in this document are for general references only and are subject to change without notice. To verify product information, please contact an Aptiv representative.

POWERPACK

HV APEX280 UI OBC 5 WAY



BENEFITS

- Optimized for 40A on-board charging solutions using 6 mm² cable range
- Robust and field proven APEX® 2.8 terminal technology
- Best in class safety and ergonomics in a compact package

FEATURES

- Compact two-piece design
- Robust connection: 3.9G vibration, 125°C temp range
- Easy mating ErgoMate™ system
- HVIL shunt on female connector

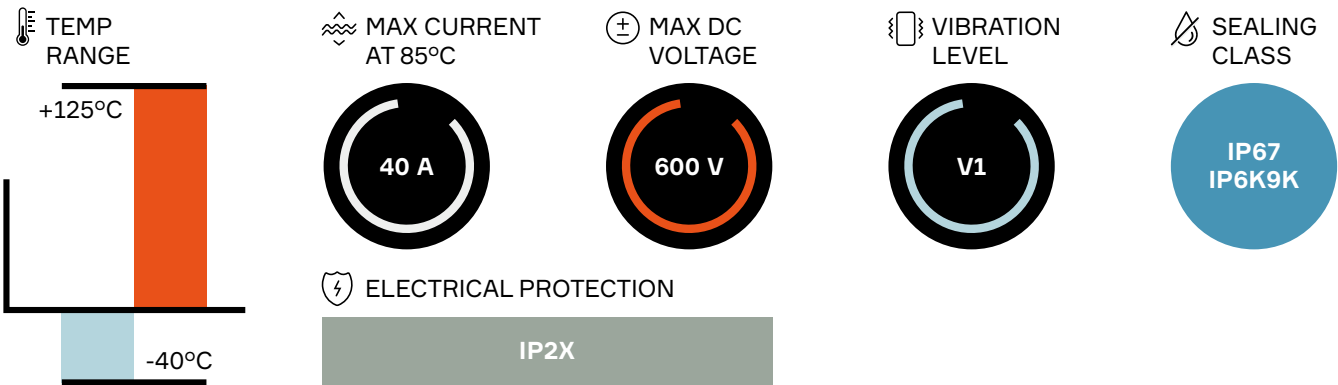
APPLICATIONS

Inlet LV, On-board charger (OBC)

AVAILABLE CONFIGURATIONS

Connector Type	Wire-to-device
Cable Exit Orientation	180°
Cable Range (mm ²)	6
Terminal Type	APEX® 2.8
# of Power Terminals	5
Shielding Type	Unshielded
HVIL	Shunt on female
Assembly Assurance	CPA
Number of Indexes	1

PERFORMANCE

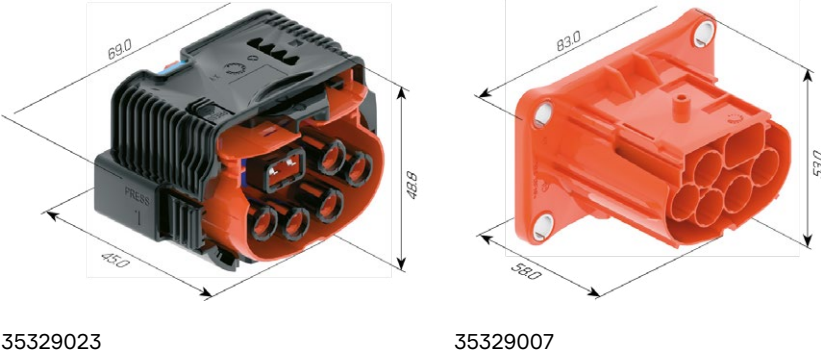


Header connector	Mating connector	BOM
35329007	35329023	1

ASSOCIATED PARTS

Part number	Description	BOM
Header		
15516298	APEX® 2.8 male tinned terminal 4 - 6 mm²	5
33511802	DCS2 1.5 male terminal gold-plated 0.22 - 0.35 mm²	2
10779703	DCS2 1.5 male terminal gold-plated 0.5 - 1 mm²	
Mating connector		
10810733	APEX® 2.8 female tinned terminal 4 - 6 mm²	5
Seals		
15324981	Single wire seal blue (for JASO wire: EEX, EEHX, EEHX-BSX)	5
12186636	Single wire seal white (for ISO thin wall cable)	5
15441379	DCS 1.5 red single wire seal 0.35 - 0.5 mm²	2
15441380	DCS 1.5 grey single wire seal 0.75 - 1 mm²	
35453676	Protective cover	1

DIMENSION MEASUREMENT SAMPLE



Part numbers, specifications, dimensions and performance data in this document are for general references only and are subject to change without notice. To verify product information, please contact an Aptiv representative.

SHIELDPACK™

HV CLASS 2 SMU 5 WAY



BENEFITS

- High operating temperature
- High robustness against vibrations
- Standard AK interface
- Compatible with various multicore cables

FEATURES

- For applications with needs up to 55A
- Compliant to LV214 / LV215
- Tool-less mating & un-mating system
- Patented squeezing fixture for enhanced anti-vibration performance
- Variant header connectors offered with pin-blade, terminal or busbar for power and harness solutions for HVIL

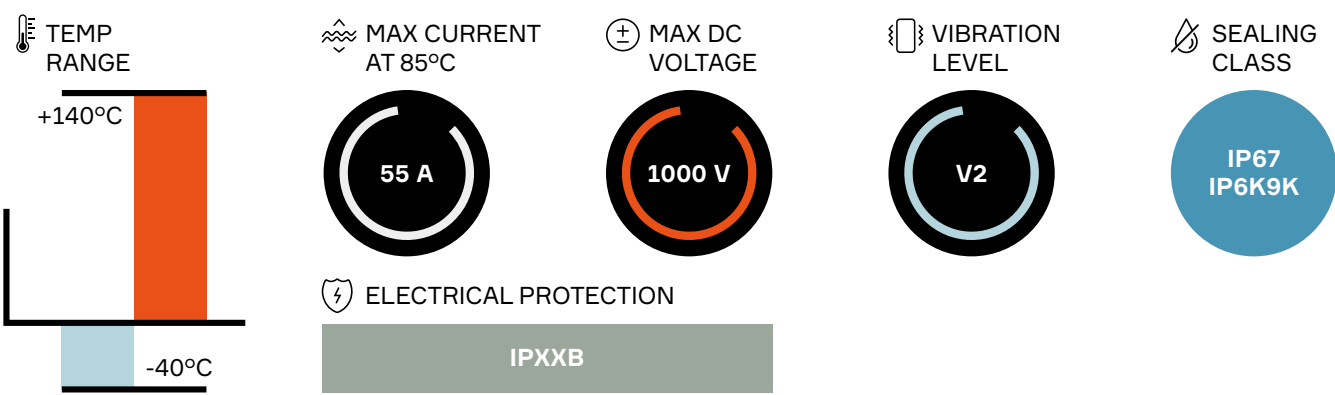
APPLICATIONS

- Air Conditioning
- PTC Heater
- On-board charger (OBC)
- DC/DC

AVAILABLE CONFIGURATIONS

Connector Type	Wire-to-device
Cable Exit Orientation	180°
Cable Range (mm²)	4 - 6
Terminal Type	6.3 mm Blade Contact
# of Cavities	3 / 4 / 5
Shielding	Multicore
HVIL	Shunt
Assembly Assurance	CPA
# of Code Indexes	1

PERFORMANCE



Index	Header Connector			Mating Connector	BOM
	Normal	Pin-Header Type	Busbar Type		
A	35235657	35153844	35425303	35200288	1

Additional codes are offered on demand. Contact an Aptiv representative for details.
Header connector can be customized for outlet and assembled HVIL harness. Contact Aptiv engineering for details.

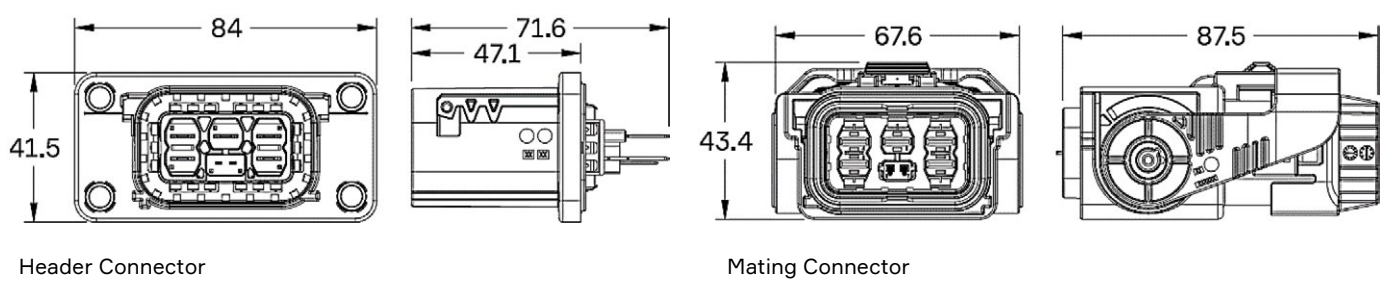
ASSOCIATED PARTS

Part number			Description	BOM
Header Connector – Normal (Crimp Terminals)				
35244766			APT 6.3 Male Terminal 4 - 6 mm²	2
13952636			1.2 Male Terminal* 0.5 - 0.75 mm²	2
35200302			HVIL Lock	1
35245734			TPA	1
Mating connector				
3 × 4 mm² Cable	4 × 4 mm² Cable	5 × 6 mm² Cable		
13984302 Ag plated 13976101 Sn plated		13984307 Ag plated 13976102 Sn plated	CTS 630 Female Terminal	3 - 5
35196906			CTS 1.2 Terminal HVIL Shunt Harness	1
35071844	35199785	35075633	Inner Ferrule	1
35071848	35199786	35075638	Outer Ferrule	1
35071846	35199766	35199476	EMC Shield	2
35200301			Inner Housing	1
35200302			TPA	1
35196896	35199782	35073658	Cable Seal	1
35196892	35170510	35200299	Cable Strain Relief	1

Also applicable with 2 × 6 mm² / 3 × 6 mm² / 4 × 6 mm² and 5 × 4 mm² cables. Contact an Aptiv representative for details.

* Non Aptiv terminal, please consult us

DIMENSION MEASUREMENT SAMPLE



Part numbers, specifications, dimensions and performance data in this document are for general references only and are subject to change without notice. To verify product information, please contact an Aptiv representative.

POWERPACK

HV630 UI OBC 2 WAY



BENEFITS

- Inner connector with TPA can be plugged into header during device assembly (on wire-to-device)
- Industry leading vibration performance
- External header housing is the same for the HV280 and HV630

FEATURES

- Tool-less unmating system
- Finger proof/touch safe
- Panel mount to device with face seal (on wire-to-device)
- Aluminum compression bushings
- ISO cable compatibility
- Secondary terminal locking

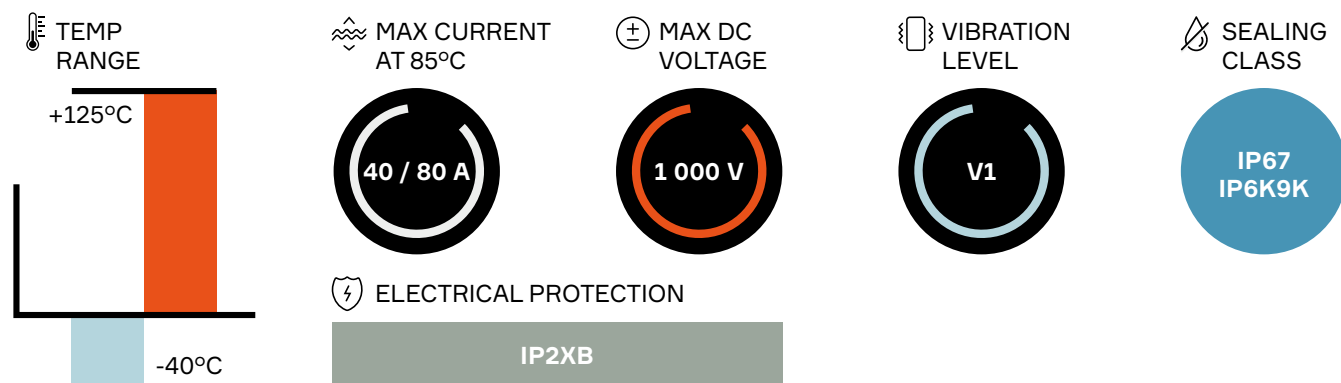
APPLICATIONS

On-board charger (OBC)

AVAILABLE CONFIGURATIONS

Connector Type	Wire-to-device, wire-to-wire
Cable Exit Orientation	180°
Cable Range (mm²)	6 - 12
Terminal Type	6.3 Terminal
# of Power Terminals	2 power
Shielding Type	Unshielded
HVIL	2 Signal cables
Assembly Assurance	CPA
Number of Indexes	3

PERFORMANCE



CONNECTOR PART NUMBERS

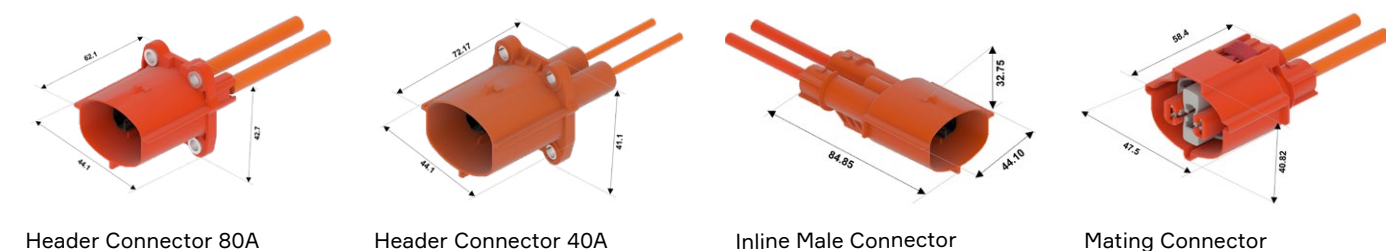
Index	Header connector 80 A	Header connector 40 A Sealed even unmated	Inline Male Connector 80 A	Mating connector	BOM
101	35197119	35472532	35197170	35197127	1
102	35197120	-	35197171	35197129	1
103	-	-	35312616	35197131	1

ASSOCIATED PARTS

Part Number	Description	BOM
Header 80 A	Header 40 A Sealed even unmated	
35197125	35472597	TPA
13964786		OCS 1.5 Male Terminal sealed 0.75 - 1 mm²
13834623		Cable Seal OCS 1.5, 0.75 - 1 mm²
35135145*	-	6.3 Male Terminal
-	33386364	APEX® Male terminal 6.3 for 6 mm²
-	10810380	Cable Seals - APEX® 6.3 for 6 mm²
Inline connector		
35197125		Inner Connector
35197158		Cable Seal 8 mm²
35197159		Cable Seal 10 mm²
35197160		Cable Seal 12 mm²
35197162		Retainer - Cable Seal 8 mm²
35197163		Retainer - Cable Seal 10 & 12 mm²
13964786		OCS 1.5 Male Terminal sealed 0.75 - 1 mm²
13834623		Cable Seal OCS 1.5 0.75 - 1 mm²
35135145*		6.3 Male Terminals
Mating connector		
35171862*		6.3 Female Terminals crimp version 6 - 10 mm²
35116544*		6.3 Female Terminals Weld to Wire option
35406662**		Cable Seal 6 mm²
35197158		Cable Seal 8 mm²
35197159		Cable Seal 10 mm²
35197160		Cable Seal 12 mm²
35197162		Retainer - Cable Seal 6 & 8 mm²
35197163		Retainer - Cable Seal 10 & 12 mm²
35138799		OCS 1.5 Female Terminal sealed 0.75 - 1 mm²
35138798		OCS 1.5 Female Terminal sealed 1.25 - 1.5 mm²
35138799		Cable Seal OCS 1.5

* Non Aptiv terminal, please consult us
** Valid only for Header Connector 40A

DIMENSION MEASUREMENT SAMPLE



Part numbers, specifications, dimensions and performance data in this document are for general references only and are subject to change without notice. To verify product information, please contact an Aptiv representative.

Power Conversion

SELECTOR GUIDE

APPLICATIONS:

- HV battery
- E-motor for 3 W
- AC / DC inverter
- Power electric box
- Distribution Unit (HV PDU)
- DC / DC converter



Application		AC/DC inverter, DC/DC converter, HV battery, Power electric box, HV PDU								
Description	SHIELDPACK™ HV DCT 1400 SI 2 WAY	SHIELDPACK™ HV AK Class 4 SI 2 WAY	SHIELDPACK™ HV RCS800 SI 2 WAY	SHIELDPACK™ HV RCS890 SI 2 WAY	SHIELDPACK™ HV RCS800 DM	SHIELDPACK™ HV RCS890 SI DM 2 WAY	SHIELDPACK™ HV PP2000 SI 2 WAY	SHIELDPACK™ HV RCS800 SB 2 WAY	SHIELDPACK™ HV RCS890 SB 2 WAY	SHIELDPACK™ HV RCS890 SB RV 2 WAY
Amperage at 85°C	310 A	235 A	210 A	210 A	210 A	200 A	210 A	210 A	200 A	200 A
Voltage	1000 V	1000 V	1000 V	600 V	850 V	850 V	1000 V	1000 V	1000 V	1000 V
Orientation	90°	90° 180°	180°	90°	180°	90°	90°	180°	90°	90°
# of ways (power)	2	2	2	2	2**	2	2	2	2	2
HVIL	✓	✓	✓	✓	x**	✓	✓	✓	✓	✓
Shielding	Individual	Individual	Individual	Individual	Individual	Individual	Individual	Bundle	Bundle	Bundle
Vibration Class	V1*	V2	V1*	V1*	V1*	V1*	V2	V1	V1	V3
Temperature Class	T3	T4	T3	T3	T3	T4	T3	T3	T3	T1
Sections power	16 - 70 mm²	25 - 50 mm²	35 - 50mm²	35 - 70 mm²	35 - 50 mm²	35 - 50 mm²	35 - 50 mm²	35 - 50 mm²	35 - 50 mm²	16 - 70 mm²
Sections HVIL	0.5 - 0.75 mm²	0.5 mm²	0.35 - 1 mm²	0.5 - 0.75 mm²	–	0.35 - 1 mm²	0.5 mm²	0.5 - 0.75 mm²	0.5 - 0.75 mm²	0.5 - 0.75 mm²
See Page	48 - 49	50 - 51	52 - 53	54 - 55	56 - 57	58 - 59	60 - 61	62 - 63	64 - 65	66 - 67

			E-motor, AC/DC inverter, DC/DC Converter, HV battery, Power electric box, HV PDU		DC/DC converter	AC/DC inverter, HV battery, Power electric box, HV PDU, E-motor			
SHIELDPACK™ HV RCS1200 SI 2 WAY	SHIELDPACK™ HV RCS1100 SI 2 WAY	SHIELDPACK™ HV RCS1190 SI 2 WAY	SHIELDPACK™ HV AK Class 4 SI 3 WAY	SHIELDPACK™ HV RCS890 SB RV 3 WAY	POWERPACK HV RCS800 UI DM 1 WAY	SHIELDPACK™ HV AK PLASTIC PASS-THROUGH SI 16 - 50 mm²	SHIELDPACK™ HV METAL PASS-THROUGH SI 70 - 95 mm²	SHIELDPACK™ HV PLASTIC PASS-THROUGH SI 50 - 70 mm²	SHIELDPACK™ HV PLASTIC PASS-THROUGH SI 95 - 120 mm²
350 A	375 A	375 A	235 A	200 A	210 A	275 A	275 A	330 A	420 A
1000 V	1000 V	1000 V	1000 V	1000 V	850 V	600 V (AC) 1000 V (DC)	600 V (AC) 1000 V (DC)	600 V (AC) 1000 V (DC)	600 V (AC) 1000 V (DC)
180°	180°	90°	90° 180°	90°	180°	180°	180°	180°	180°
2	2	2	3	3	1	1, 2 & 3	1	2	1, 2
✓	✓	✓	✓	✓	x	x	x	x	x
Individual	Individual	Individual	Individual	Bundle	Unshielded	Individual	Individual	Individual	Individual
V1*	V2	V2	V2	V4	V1*	V3	V3	V4	V3
T3	T2	T3	T4	T2	T3	T4	T3	T4	T4
35 - 70 mm²	70 - 95 mm²	70 - 95 mm²	25 - 50 mm²	16 - 70 mm²	35 - 50 mm²	16 - 50 mm²	25 - 50 mm²	50 - 70 mm²	95 - 120 mm²
0.35 - 1 mm²	0.5 - 0.75 mm²	0.5 - 0.75 mm²	0.5 mm²	0.5 - 0.75 mm²	–	–	–	–	–
68 - 69	70 - 71	74 - 75	76 - 77	78 - 79	80 - 81	82 - 83	84 - 85	86 - 87	88 - 89

* For classification V2, please consult an Aptiv representative.
** For solution with HVIL please contact your local Aptiv representative.

SHIELDPACK™

HV DCT™ 1400 SI 2 WAY



BENEFITS

- Class leading package size
- Direct contact terminal steel spring exceeds 100 times life reliability projection over traditional copper alloy lamella
- Connections design for harness processing and manufacturing simplicity
- Maximum flexibility for device electrical connection

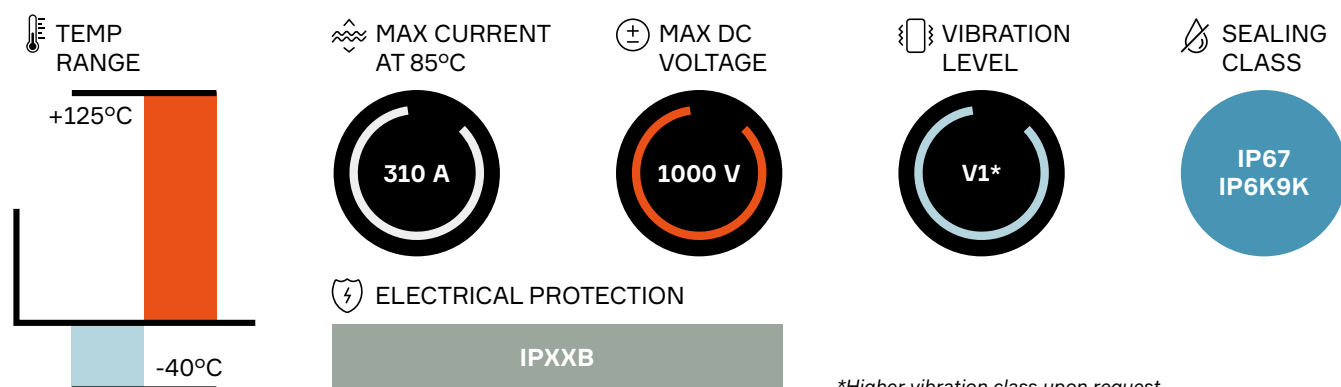
FEATURES

- Applicable for 310 A RMS battery or inverter applications
- Right Angle or Axial orientation mates to one header
- Up to 70 mm² shielded cable
- Flexible device mounting and power bus connection
- Aluminum and Busbar compatible

AVAILABLE CONFIGURATIONS

Connector Type	Wire-to-device
Cable Exit Orientation	90°, 180°
Cable Range (mm ²)	16 - 70
Terminal Type	DCT 1400
# of Power Terminals	2
Shielding	Individual
HVIL	Shunt available upon request
Assembly Assurance	CPA/TPA
Number of Indexes	2

PERFORMANCE



Index	Header type 1	Header type 2	90° Mating connector	180° Mating connector	BOM
x01	35875679	36017918*	35876675	35876033	1
x02	35875680	36017919*	35876676	35876034	1

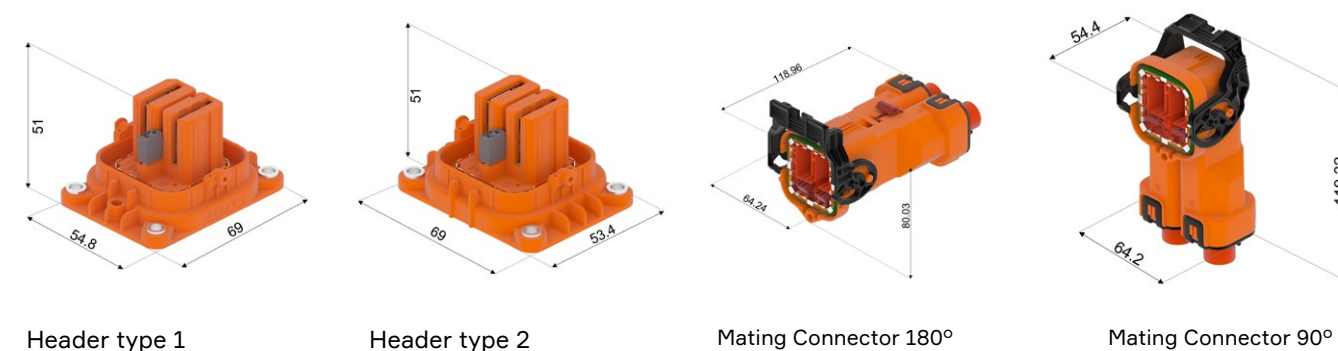
*Available upon request

ASSOCIATED PARTS

Part number		Description	BOM
Header			
13959141		HVIL Terminal, CTS 1.2 female sealed, 0.5 - 0.75 mm²	2
35688733		HVIL Terminal ISL	1
Mating connector			
Mating Connector 90°	Mating Connector 180°		
35688715		Cavity A DCT 1400 terminal ISO 70 mm²	1
35688716		Cavity B DCT 1400 terminal ISO 70 mm²	1
	35688713	Cavity A DCT 1400 terminal ISO 70 mm²	1
	35688714	Cavity B DCT 1400 terminal ISO 70 mm²	1
35688697		Cable seal retainer ISO 70 mm²	2
35688753		Cable seal ISO 70 mm²	2
35831208		Outer ferrule ISO 70 mm²	2
35831207		Inner ferrule ISO 70 mm²	2

* For other cable size dimension part numbers, please consult us.

DIMENSION MEASUREMENT SAMPLE



Part numbers, specifications, dimensions and performance data in this document are for general references only and are subject to change without notice. To verify product information, please contact an Aptiv representative.

SHIELDPACK™

HV AK CLASS 4 SI 2 WAY AK



BENEFITS

- Standard AK interface
- High operating temperature
- High robustness against vibrations
- Optimized for better contact resistance and lesser retention force
- Offer both 90° and 180° systems, with same header connector and interface

FEATURES

- Up to 50 mm² cross sections
- Compliant to LV214 / LV215
- Patented squeezing fixture for enhanced anti-vibration performance
- Lever on 180° can be placed on either side

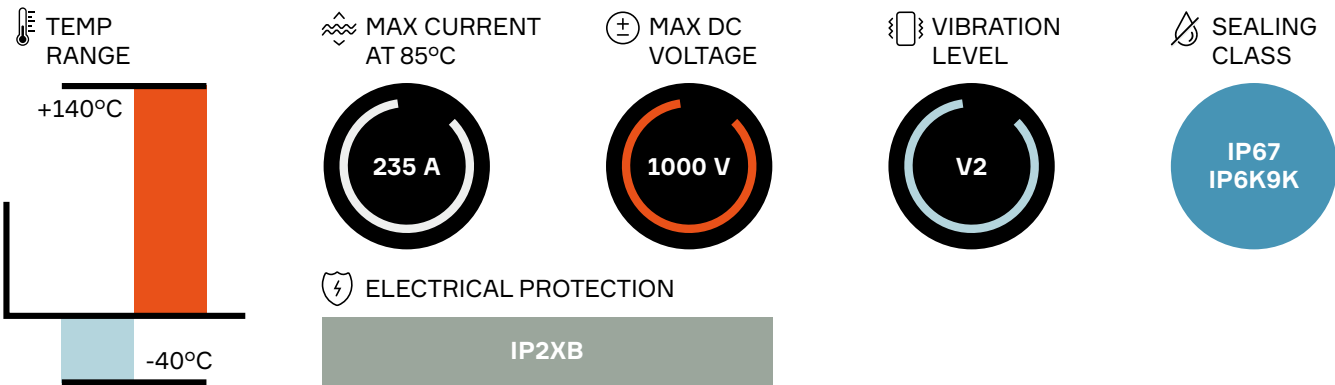
APPLICATIONS

- AC / DC inverter
- HV battery
- HV PDU
- E-motor
- Power electric box

AVAILABLE CONFIGURATIONS

Connector Type	Wire-to-device
Cable Exit Orientation	90°, 180°
Cable Range (mm²)	25 - 50 (power) 0.5 (HVIL)
Terminal Type	8 mm round contact system
# of Power Terminals	2
Shielding	Individual
HVIL	Shunt on female
Assembly Assurance	CPA/TPA
Number of Indexes	4

PERFORMANCE



Index	Header connector	Mating connector 90°	Mating connector 180°	BOM
A	33351454	35128941	35168081 _A 35268206 _B	1
B	33351455	35165950	35201417 _A 35268207 _B	1

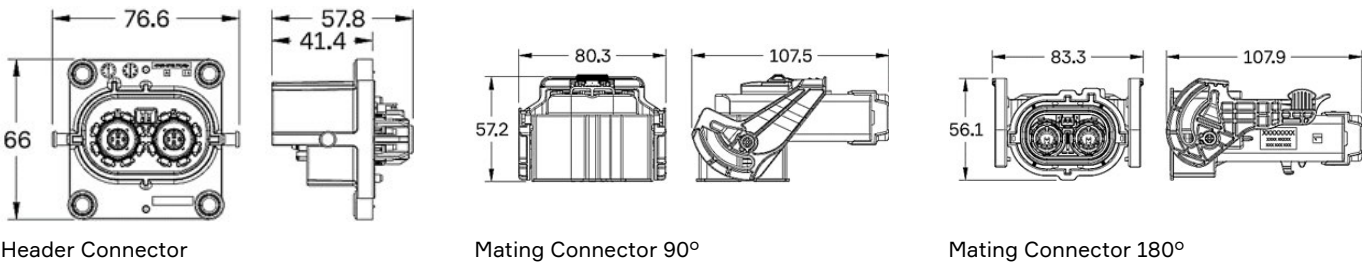
Lower case A and B on mating connector 180° indicates the side lever assist is available

ASSOCIATED PARTS

Part number			Description	BOM
Header connector				
13952636*			1.2 male terminal 0.5 - 0.75 mm²	2
13954415*			1.2 male terminal 0.25 - 0.35 mm²	2
Mating connector 90°				
25 mm² Cable	35 mm² Cable	50 mm² Cable		
35172741	35172742 or 35150077		APT-890 female terminal	2
	35172744		Deep Drawn Socket Pin	2
	35142203		Outer Insulation Cap	2
35172724	35172725	35172726	Inner Ferrule	2
35172727	35172728	35172729	Outer Ferrule	2
35172732	35172733	35172734	Cable Seal	2
35149115	35142208	35149113	Cable Strain Relief	2
Mating connector 180°				
25 mm² Cable	35 mm² Cable	50 mm² Cable		
35210072	35168235		APT-800 female terminal	2
	35168087		Shielding Can	2
	35201467		Lamella Insulation Socket	2
	35168234		Lock Retainer	2
35172724	35172725	35172726	Inner Ferrule	2
35168227	35168228	35168229	Inner Ferrule	2
35172732	35172733	35172734	Cable Seal	2
35149115	35142208	35149113	Cable Strain Relief	2

* Non Aptiv terminal, please consult us

DIMENSION MEASUREMENT SAMPLE



Part numbers, specifications, dimensions and performance data in this document are for general references only and are subject to change without notice. To verify product information, please contact an Aptiv representative.



SHIELDPACK™

HV RCS800 SI 2 WAY



APPLICATIONS

- AC / DC inverter
- DC / DC converter
- HV battery

BENEFITS

- Specifically developed for compact environment
- Slider solution offers the maximum pressure surface in limited space conditions
- Header connection on flat surface

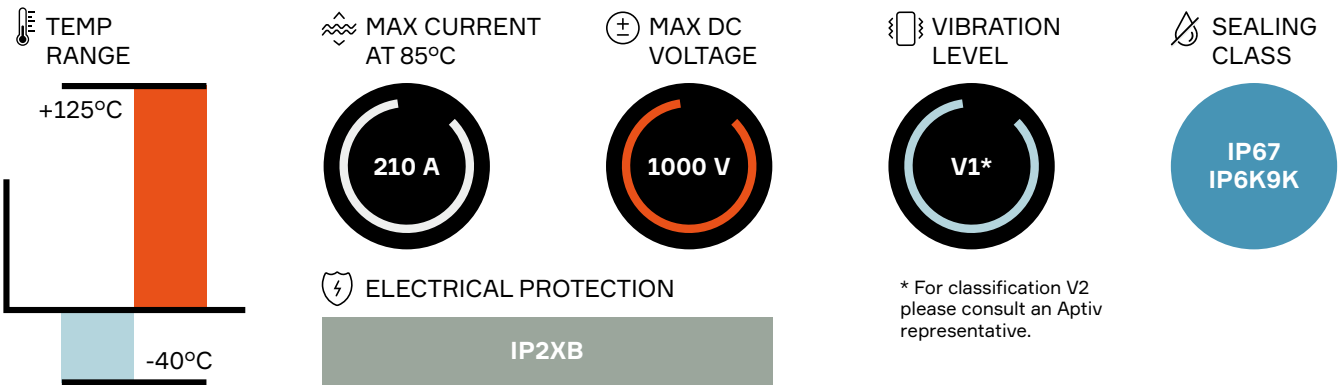
FEATURES

- High sealing class: IP67 / IP69k
- Strain relief device ensures product performance in constrained environment
- Two-step un-mating to prevent from arcing

AVAILABLE CONFIGURATIONS

Connector Type	Wire-to-device
Cable Exit Orientation	180°
Cable Range (mm²)	35 - 50 (power) / 0.35 - 1.0 (HVIL)
Terminal Type	8 mm round contact system - RCS800
# of Power Terminals	2
Shielding	Individual
HVIL	Shunt on harness connector
Assembly Assurance	CPA
Number of Indexes	1

PERFORMANCE



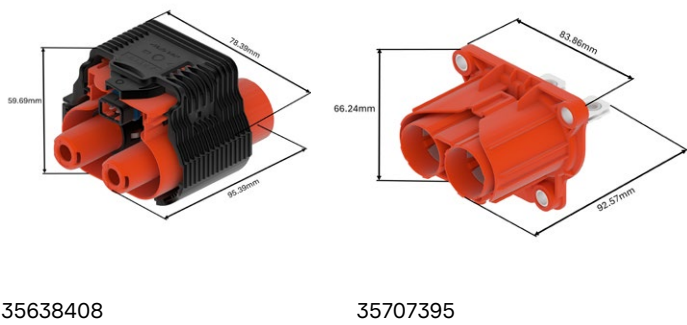
Header	Header connector with interlock harness*	Mating connector	BOM
35707395	35464221	35638408	1

* Specific version with interlock jumper on demand

ASSOCIATED PARTS

Part number	Description	BOM
Header		
15549847	DSQ 1.5 female terminal silver-plated 0.35 - 0.50 mm²	2
15549848	DSQ 1.5 female terminal silver-plated 0.75 - 1.00 mm²	
15441379	DCS/DSQ 1.5 red single wire seal 0.22 - 0.5 mm²	2
15441380	DCS/DSQ 1.5 red single wire seal 0.75 - 1.0 mm²	
Mating connector		
13893887	RCS800 female terminal silver-plated 35 - 50 mm²	2
35686181	Outer ferrule 35 mm²	2
35638405	Outer ferrule 50 mm²	
35628301	Inner ferrule 35 mm²	2
35628300	Inner ferrule 50 mm²	
35686164	Single wire seal 35 mm²	2
35638394	Single wire seal 50 mm²	
35682854	Cable strain relief 35 mm²	1
35669835	Cable strain relief 50 mm²	

DIMENSION MEASUREMENT SAMPLE



Part numbers, specifications, dimensions and performance data in this document are for general references only and are subject to change without notice. To verify product information, please contact an Aptiv representative.

SHIELDPACK™

HV RCS890 SI 2 WAY



BENEFITS

- Specifically designed for compact environments
- Slider solution offers the maximum pressure surface in limited space conditions
- Header connection on flat surface

FEATURES

- Sealing class: IP67 / IP69k
- Strain relief device ensures product performance in constrained environment
- Two-step un-mating to prevent from arcing

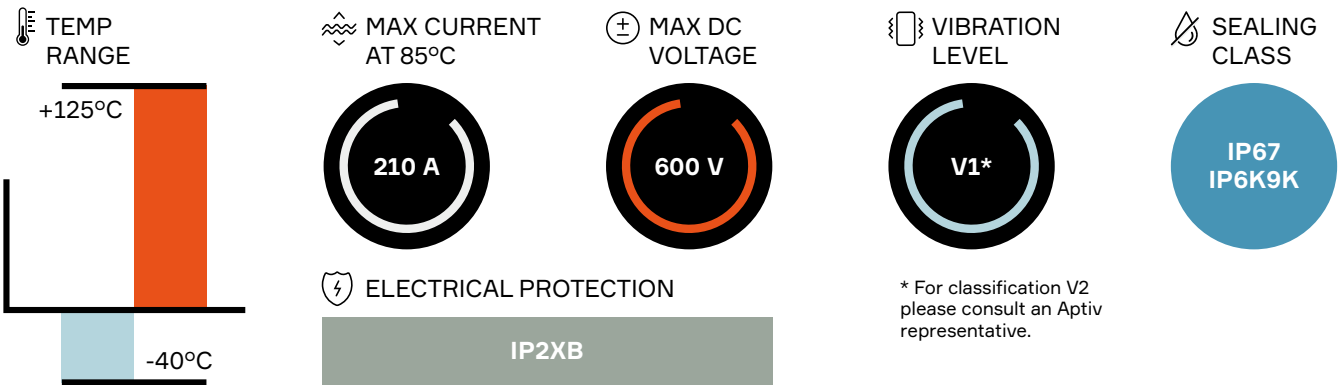
APPLICATIONS

- AC / DC inverter
- DC / DC converter
- HV battery
- Power electric box
- HV PDU

AVAILABLE CONFIGURATIONS

Connector Type	Wire-to-device
Cable Exit Orientation	90°
Cable Range (mm²)	35 - 70
Terminal Type	8 mm round contact system
# of Power Terminals	2
Shielding	Individual
HVIL	Shunt on female
Assembly Assurance	CPA
Number of Indexes	1

PERFORMANCE

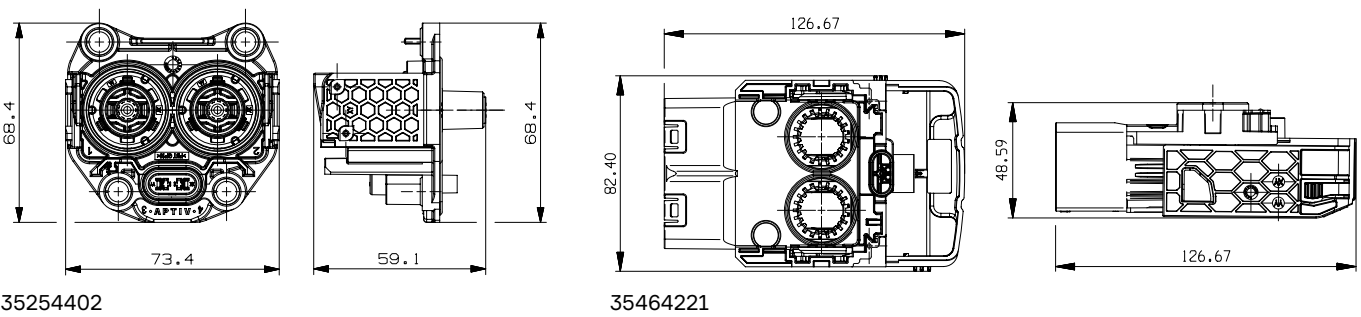


Header connector	Mating connector	BOM
35254402	35464221	1

ASSOCIATED PARTS

Part number	Description	BOM
Header		
15549847	DSQ 1.5 female terminal silver-plated 0.35 - 0.5 mm²	2
15549848	DSQ 1.5 female terminal silver-plated 0.75 - 1 mm²	
15441379	DCS/DSQ 1.5 male red single wire seal 0.22 - 0.5 mm²	2
15441380	DCS/DSQ 1.5 male grey single wire seal 0.75 - 1 mm²	
Mating Connector		
33502217	RCS 890 female terminal silver-plated 35 - 50 mm²	2
35225104	RCS 890 female terminal silver-plated 70 mm²	
35082415	Outer ferrule 35 mm²	2
35234890	Outer ferrule 50 - 70 mm²	
35084603	Recovery shield assembly 35 mm²	2
35236787	Recovery shield assembly 50 - 70 mm²	
35084610	Single wire seal & retainer 35 mm²	2
35084586	Single wire seal & retainer 50 mm²	
35236755	Single wire seal & retainer 70 mm²	

DIMENSION MEASUREMENT SAMPLE



SHIELDPACK™

HV RCS800 DM



BENEFITS

- Cost effective solution with unshielded terminal holder within device replacing traditional shielded headers
- Unique and safe mating screwing with innovative Screw Position Assurance (SPA)
- Header is sealed in both mated and unmated position

FEATURES

- Robust bolt driven mate assist
- Fingersafe via plastic tips on male pins
- Cable range: ~ 50 mm² and smaller

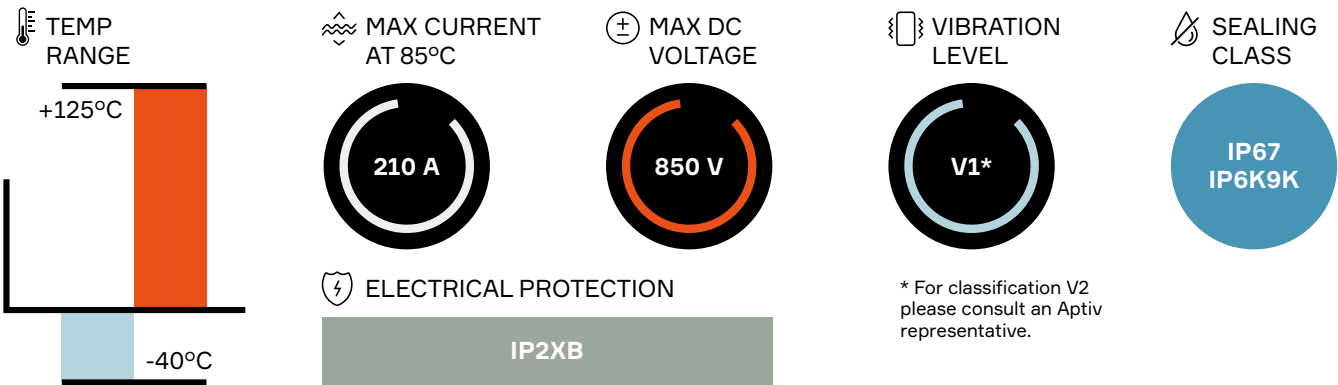
APPLICATIONS

- AC / DC inverter
- DC / DC converter
- HV battery
- Power electric box
- HV PDU

AVAILABLE CONFIGURATIONS

Connector Type	Wire-to-device
Cable Exit Orientation	180°
Cable Range (mm²)	35 - 50 (power) 0.35 - 1.0 (HVIL)
Terminal Type	8 mm round contact system
# of Power Terminals	2
Shielding	Individual
HVIL	Shunt on female
Assembly Assurance	SPA
Number of Indexes	1

PERFORMANCE



Header*	Header with HVIL**	Mating connector	BOM
35099885	35099880	35098453	1

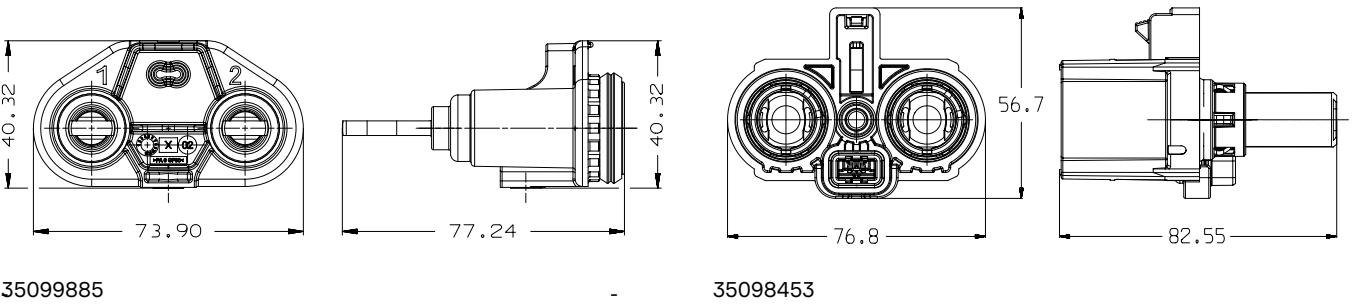
* Header connector is a fully assembled part and therefore has no associated parts.
** Please contact your local Aptiv representative for serial production information.

ASSOCIATED PARTS

Part number	Description	BOM
Mating connector		
13893887	RCS 800 female terminal silver-plated 35 - 50 mm²	2
35082410	Inner ferrule 35 and 50 mm²	2
35082415	Outer ferrule 35 and 50 mm²	2
35099247	Single wire seal & retainer 35 mm²	2
35099248***	Single wire seal & retainer 50 mm²	
35092416	RCS800 tube 35 - 50 mm²	2

*** Available only by prototype, please contact your local Aptiv representative for more information on serial production.

DIMENSION MEASUREMENT SAMPLE



SHIELDPACK™

HV RCS890 SI DM 2 WAY



BENEFITS

- Cost effective solution with unshielded terminal holder within device replacing traditional shielded headers
- Unique and safe mating screwing with innovative Screw Position Assurance (SPA)
- Header is sealed in both mated and unmated position

FEATURES

- Robust bolt driven mate assist
- Fingersafe via plastic tips on male pins
- Cable range: ~ 50 mm² and smaller

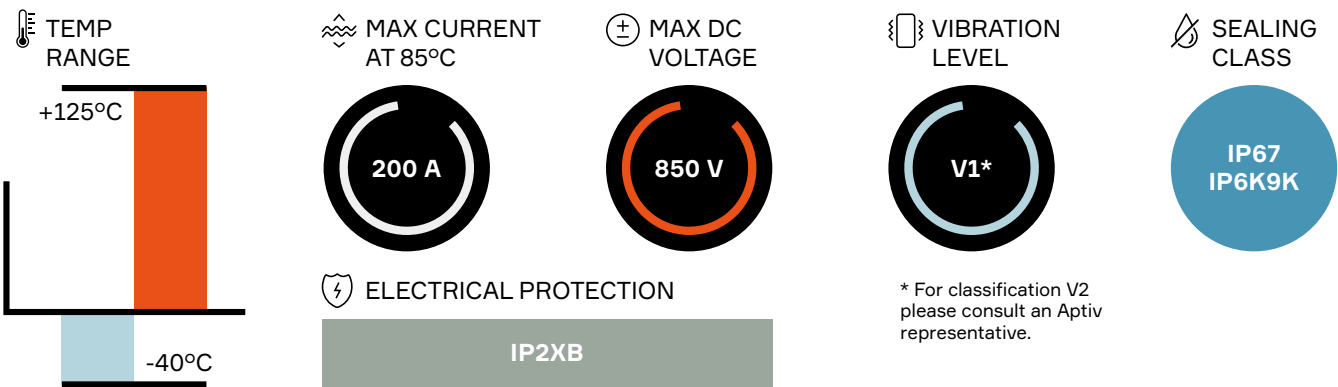
APPLICATIONS

- AC / DC inverter
- DC / DC converter
- HV battery
- Power electric box
- HV PDU

AVAILABLE CONFIGURATIONS

Connector Type	Wire-to-device
Cable Exit Orientation	90°
Cable Range (mm²)	35 - 50 (power) 0.35 - 1 (HVIL)
Terminal Type	8 mm round contact system
# of Power Terminals	2
Shielding	Individual
HVIL	Shunt on female
Assembly Assurance	SPA (Screwed Position Assurance)
Number of Indexes	1

PERFORMANCE

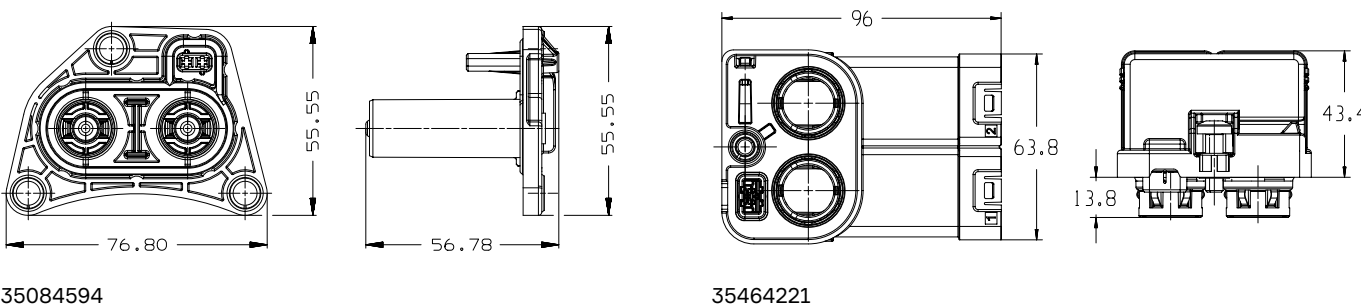


Header	Mating connector	BOM
35084594	35464221	1

ASSOCIATED PARTS

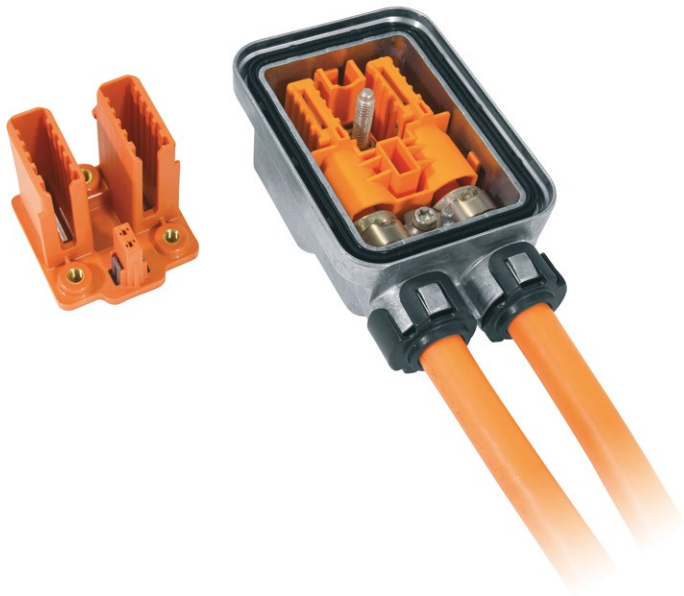
Part number	Description	BOM
Header		
15549847	DSQ 1.5 female terminal silver-plated 0.35 - 0.5 mm²	2
15549848	DSQ 1.5 female terminal silver-plated 0.75 - 1 mm²	
15441379	DCS/DSQ 1.5 red single wire seal 0.22 - 0.5 mm²	2
15441380	DCS/DSQ 1.5 grey single wire seal 0.75 - 1 mm²	
Mating connector		
33502217	RCS890 female terminal 35-50 mm²	2
35628303	Cover ferrule 50 mm²	2
35850205	SWS spacer 50 mm²	2
35850207	Cable strain relief 50 mm²	2

DIMENSION MEASUREMENT SAMPLE



SHIELDPACK™

HV PP2000 SI 2 WAY



BENEFITS

- Header interface is integrated into device case
- Cost-effective full plastic header assembled from inside out
- Bolt driven mate assist
- Ultrasonic welding used for power terminal

FEATURES

- Internal HVIL shunted in harness connector
- Finger proof and non-finger proof options available
- Provides finger proof terminal towers and HVIL
- Header accepts busbars provided by module

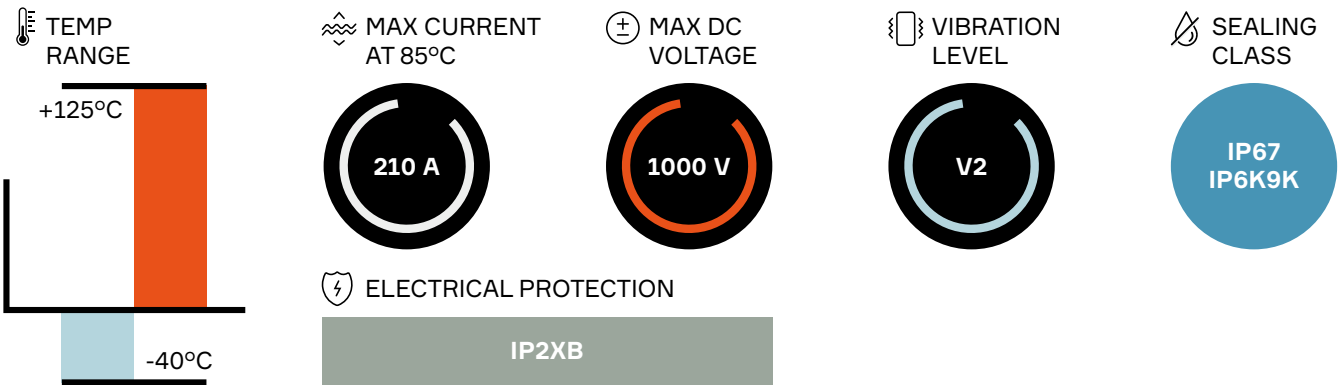
APPLICATIONS

- AC / DC inverter
- DC / DC converter
- HV battery
- Power electric box
- HV PDU

AVAILABLE CONFIGURATIONS

Connector Type	Wire-to-device
Cable Exit Orientation	90°
Cable Range (mm²)	35 - 50 (power) 0.5 (HVIL)
Terminal Type	Power Pack 2000 17.7
# of Terminals	2
Shielding Type	Individual
HVIL	Shunt on female
Assembly Assurance	CPA/TPA
Number of Indexes	1

PERFORMANCE

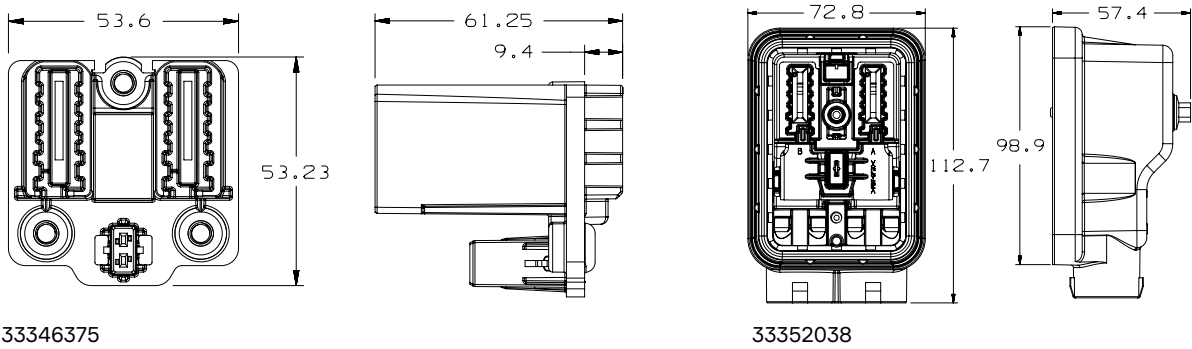


Header connector	Mating connector	BOM
33346375	33352038	1

ASSOCIATED PARTS

Part number	Description	BOM
Header		
15432237	CTS female terminal silver-plated HVIL 0.35 mm²	2
33346376	HVIL TPA	1
Mating Connector		
13801592	Power Pack 2000 female sonic weld terminal	2
33352058	Inner ferrule 35 mm²	2
33352059	Inner ferrule 50 mm²	2
33352056	Outer ferrule 35 mm² & 50 mm²	2
33352048	Cable seal 35 mm²	2
33352049	Cable seal 50 mm²	2
33352051	Strain relief 35 mm²	2
33352052	Strain relief 50 mm²	2
33352055	TPA	1
13849267	Fastener M5	1

DIMENSION MEASUREMENT SAMPLE



Part numbers, specifications, dimensions and performance data in this document are for general references only and are subject to change without notice. To verify product information, please contact an Aptiv representative.

SHIELDPACK™

HV RCS800 SB 2 WAY



BENEFITS

- Easy to assemble with integrated ErgoMate™ Axial Mating Assist System on harness connector
- Compact package with unique integrated electric interlock
- Header is sealed in both mated and unmated positions

FEATURES

- Bundle shielding with external braid
- Panel mount to device with face seal to module
- Two-stage disconnect for safe unmating

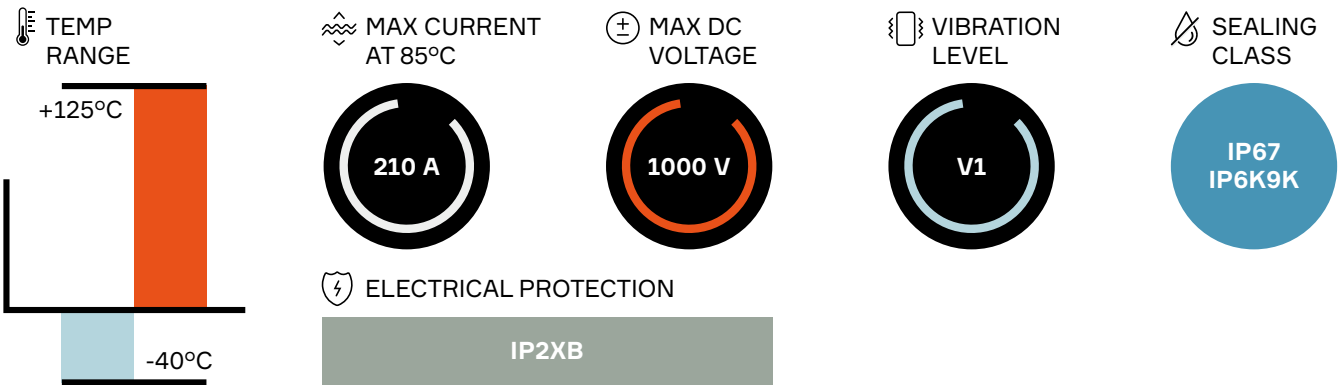
APPLICATIONS

- AC / DC inverter
- DC / DC converter
- HV battery
- Power electric box
- HV PDU

AVAILABLE CONFIGURATIONS

Connector Type	Wire-to-device
Cable Exit Orientation	180°
Cable Range (mm²)	35 - 50 (power) 0.5 - 0.75 (HVIL)
Terminal Type	8 mm round contact system
# of Power Terminals	2
Shielding	Bundle
HVIL	Shunt on female
Assembly Assurance	CPA
Number of Indexes	2

PERFORMANCE

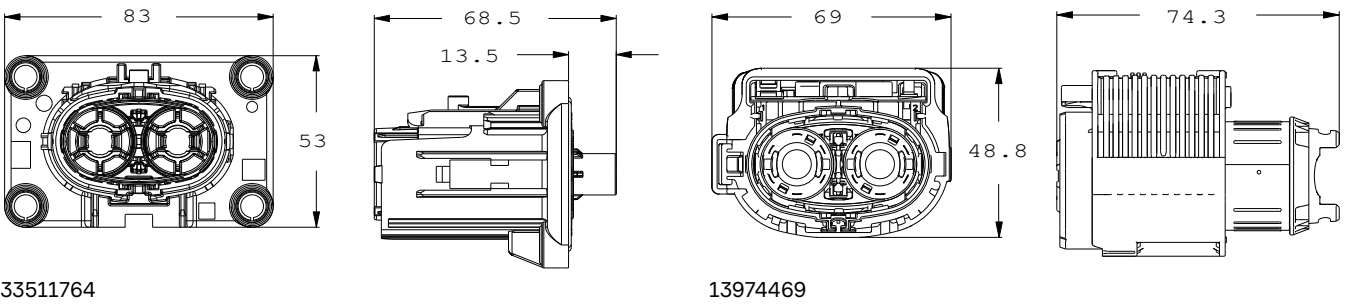


Index	Header connector	Mating connector	BOM
1	33511764	13974469	1
2	33511762	33511761	

ASSOCIATED PARTS

Part number	Description	BOM
Header		
33512193	RCS 800/890 male pin terminal silver version standard length	2
33511746	RCS 800/890 male pin terminal silver version V1 length	
33511747	RCS 800/890 male pin terminal silver version V2 length	
10779703	DCS2 1.5 male terminal gold-plated 0.5 - 1 mm²	2
15441379	DCS/DSQ 1.5 red single wire seal 0.22 - 0.5 mm²	2
15441380	DCS/DSQ 1.5 grey single wire seal 0.75 - 1 mm²	
Mating Connector		
13893887	RCS 800 female terminal silver version 35 - 50 mm²	2
13893889	RCS 800 female retainer (plug)	2
13893888	RCS 800 female 35 - 40 mm² (plug)	2
13923559	RCS 800 female 50 mm² (plug)	

DIMENSION MEASUREMENT SAMPLE



SHIELDPACK™

HV RCS890 SB 2 WAY



BENEFITS

- Easy to assemble with integrated ErgoMate™ Axial Mating Assist System on harness connector
- Compact package with unique integrated electric interlock
- Header is sealed in both mated and unmated position

FEATURES

- Bundle shielding with external braid
- Panel mount to device with face seal to module
- Two-stage disconnect for safe unmating
- HVIL shunted in harness connector

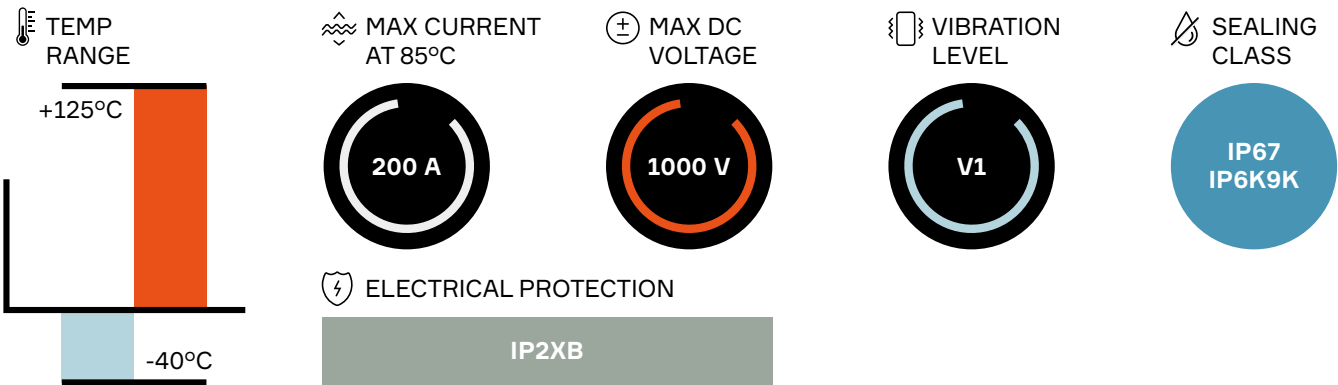
APPLICATIONS

- Inverter
- Converter
- HV battery

AVAILABLE CONFIGURATIONS

Connector Type	Wire-to-device
Cable Exit Orientation	90°
Cable Range (mm²)	35 -50
Terminal Type	8 mm round contact system
# of Power Terminals	2
Shielding	Bundle
HVIL	Shunt on female
Assembly Assurance	CPA
Number of Indexes	1

PERFORMANCE

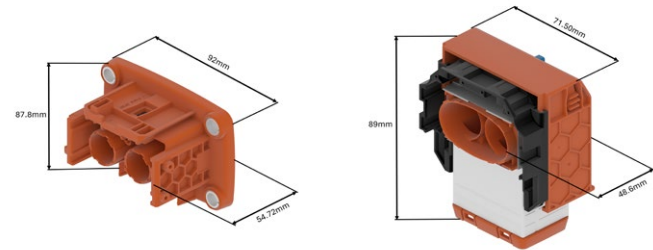


Header connector	Mating connector	BOM
33503821	33511750	1

ASSOCIATED PARTS

Part number	Description	BOM
Header		
33512193	RCS800/890 male pin terminal silver version standard length	2
33511746	RCS800/890 male pin terminal silver version standard V2 length	2
33511747	RCS800/890 male pin terminal silver version standard V1 length	2
10811962	DC-2 1.5 female terminal gold plated 0.5 - 1.0 mm²	2
15441379	DCS/DSQ 1.5 red single wire seal 0.22 - 0.5 mm²	2
15441380	DCS/DSQ 1.5 red single wire seal 0.75 - 1.0 mm²	2
Mating Connector		
33308229	RCS 890 female terminal silver version 16 - 25 mm²	2
33502217	RCS 890 female terminal silver plated 35 - 50 mm²	2
35225104	RCS 890 female terminal silver plated 70 mm²	2
33521619	RCS 890 single wire seal and retainer (plug) 16 - 25 mm²	2
33511753	RCS 890 single wire seal and retainer (plug) 35 - 40 mm²	2
33511754	RCS 890 single wire seal and retainer (plug) 50 mm²	2
35199856	RCS 890 single wire seal and retainer (plug) 70 mm²	2
33504038	RCS 890 2-way half clamp	2

DIMENSION MEASUREMENT SAMPLE



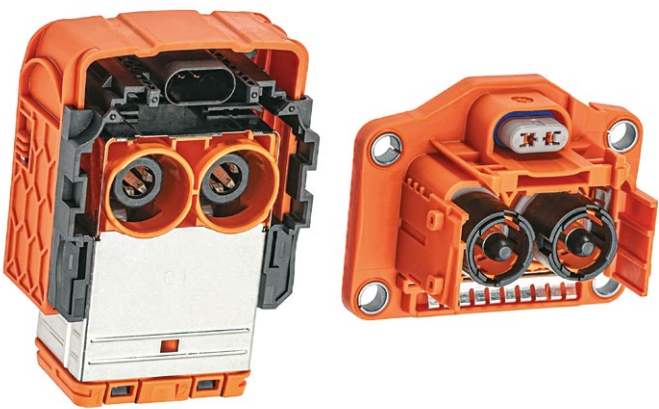
33503821

33511750

Part numbers, specifications, dimensions and performance data in this document are for general references only and are subject to change without notice. To verify product information, please contact an Aptiv representative.

SHIELDPACK™

HV RCS890 SB RV 2 WAY



BENEFITS

- Ultra compact design for applications with space constraints
- Panel mount to device with face seal to module
- Header is sealed in both mated and unmated position

FEATURES

- Two-stage disconnect for safe unmating
- Easier mating with Slider Mating Assist System on harness connector
- Bundle shielding with external braid
- HVIL shunted in harness connector

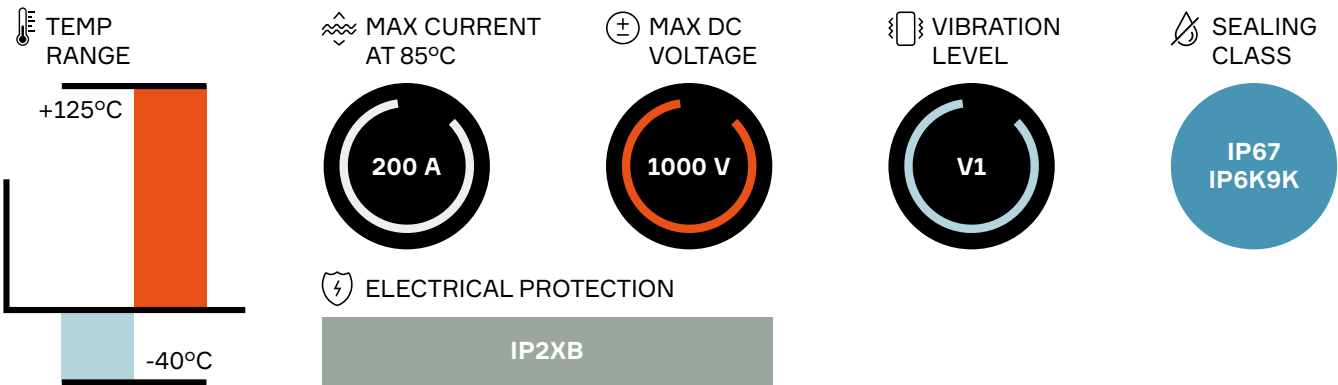
APPLICATIONS

AC / DC inverter
DC / DC converter
HV battery
Power electric box
HV PDU

AVAILABLE CONFIGURATIONS

Connector Type	Wire-to-device
Cable Exit Orientation	90°
Cable Range (mm²)	16 - 70 (power) 0.35 - 1 (HVIL)
Terminal Type	8 mm round contact system
# of Power Terminals	2
Shielding	Bundle
HVIL	Shunt on female
Assembly Assurance	CPA
Number of Indexes	2

PERFORMANCE

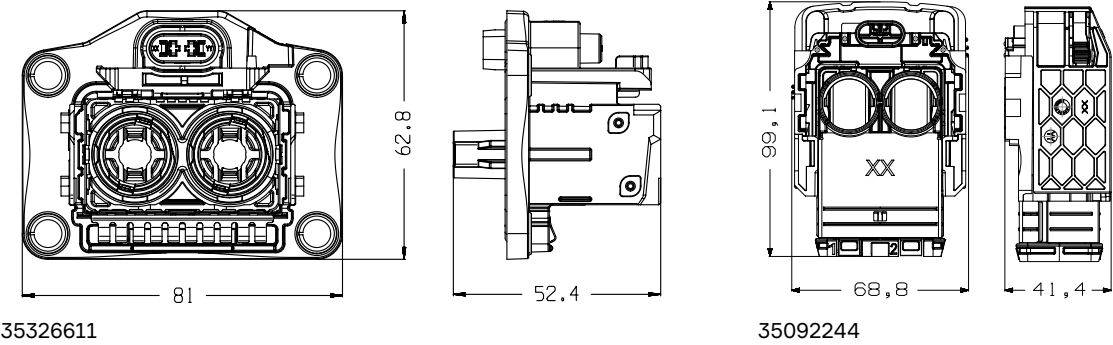


Index	Header connector	Mating connector	BOM
1	35326611	35092244	1
2	35326613	35092239	

ASSOCIATED PARTS

Part number	Description	BOM
Header		
10811962	DCS2 1.5 female terminal gold-plated 0.5 - 1 mm²	2
15441379	DCS/DSQ 1.5 red single wire seal 0.35 - 0.5 mm²	2
15441380	DCS/DSQ 1.5 grey single wire seal 0.75 - 1 mm²	
35304635	RCS 800 male bus bar terminal silver version polarized pin	2
Mating Connector		
33308229	RCS 890 female terminal silver version 16 - 25 mm²	2
33502217	RCS 890 female terminal silver version 35 - 50 mm²	
35225104	RCS 890 female terminal silver version 70 mm²	
33269218	RCS 890 single wire seal & retainer (plug) 16 - 25 mm²	2
33511753	RCS 890 2-way female single wire seal & retainer (plug) 35 - 40 mm²	
33511754	RCS 890 2-way female single wire seal & retainer (plug) 50 mm²	
35199856	RCS 890 2-way female single wire seal & retainer (plug) 70 mm²	2
35091447	RCS 890 2-way half clamp	

DIMENSION MEASUREMENT SAMPLE



Part numbers, specifications, dimensions and performance data in this document are for general references only and are subject to change without notice. To verify product information, please contact an Aptiv representative.

SHIELDPACK™

HV RCS1200 SI 2 WAY



BENEFITS

- High-water protections
- Easy mating thanks to slider feature on female connector
- Strain relief device ensures product performance in constrained environment

FEATURES

- Header has a flat and simple device interface
- Two-step un-mating to prevent from arcing
- 2 gear cam architecture for efficient mating effort reduction

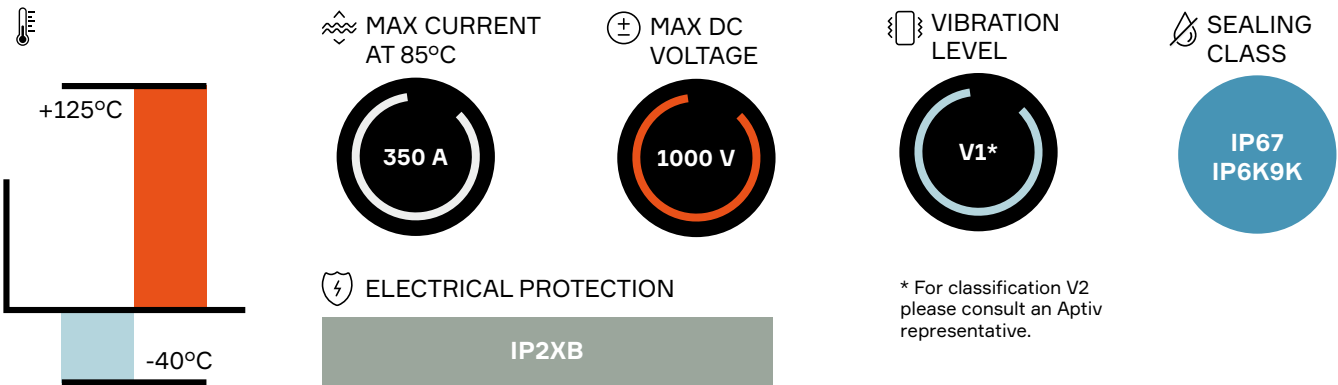
APPLICATIONS

DC / DC converter
HV battery
E-motor

AVAILABLE CONFIGURATIONS

Connector Type	Wire-to-device
Cable Exit Orientation	180°
Cable Range (mm²)	35 - 70
Terminal Type	12 mm round contact system
# of Power Terminals	2
Shielding	Individual
HVIL	Shunt on female
Assembly Assurance	CPA
Number of Indexes	2

PERFORMANCE

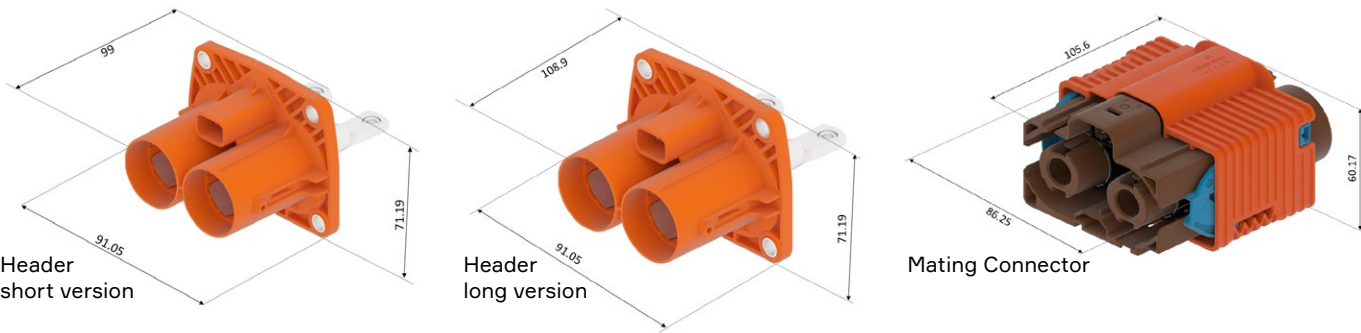


Header connector	Mating connector	BOM
35464886 (short version) 35716978 (long version)	35561611	1

ASSOCIATED PARTS

Part number	Description	BOM
Header		
15549847	DSQ 1.5 female terminal silver-plated 0.35 - 0.5 mm²	2
15549848	DSQ 1.5 female terminal silver-plated 0.75 - 1 mm²	
15441379	DCS/DSQ 1.5 male red single wire seal 0.22 - 0.5 mm²	2
15441380	DCS/DSQ 1.5 male grey single wire seal 0.75 - 1 mm²	
Mating connector		
35454328	RCS 1200 female terminal silver-plated 35 - 60 mm²	2
35443592	RCS 1200 female terminal silver-plated 70 - 95 mm²	
35554831	Washer 35 mm²	2
35604916	Washer 50 mm²	
35563248	Washer 70 mm²	
35628301	Inner ferrule 35 mm²	2
35628300	Inner ferrule 50 mm²	
35628299	Inner ferrule 70 mm²	
35619070	Outer ferrule 35 mm²	2
35347217	Outer ferrule 50 mm²	
35339328	Outer ferrule 70 mm²	
35464874	Single wire seal 35 mm²	2
35639386	Single wire seal 50 mm²	
35464786	Single wire seal 70 mm²	
35464889	Strain relief device 35 mm²	1
35639387	Strain relief device 50 mm²	
35464793	Strain relief device 70 mm²	

DIMENSION MEASUREMENT SAMPLE



SHIELDPACK™

HV RCS1100 SI 2 WAY



BENEFITS

- Specifically designed for harsh environment applications
- 90° header option also available (see HV RCS 1190 Series datasheet)
- Robust lever ensuring easy mating/unmating with low forces
- Same device interface for both RCS 1100 and RCS 1190

FEATURES

- Up to 95 mm² cross sections
- Made for applications with needs up to 375A
- Compliant to LV214/215module

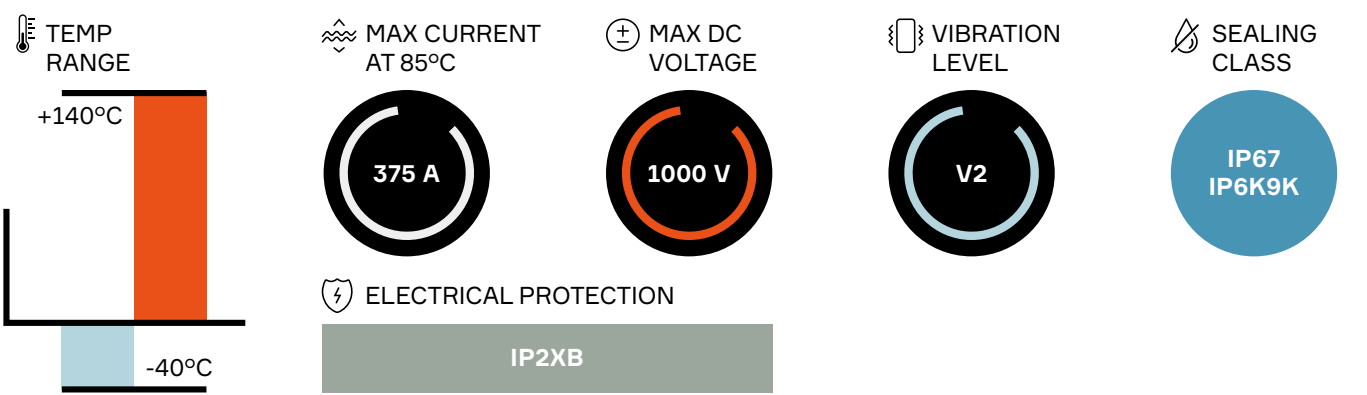
APPLICATIONS

- Inverter
- E-Motor
- HV PDU
- HV-Battery

AVAILABLE CONFIGURATIONS

Connector Type	Wire-to-device
Cable Exit Orientation	180°
Cable Range (mm²)	50 - 95 (power) 0.5 - 0.75 (HVIL)
Terminal Type	11 mm round contact system
# of Power Terminals	2
Shielding	Individual
HVIL	Shunt on female
Assembly Assurance	CPA
Number of Indexes	2

PERFORMANCE

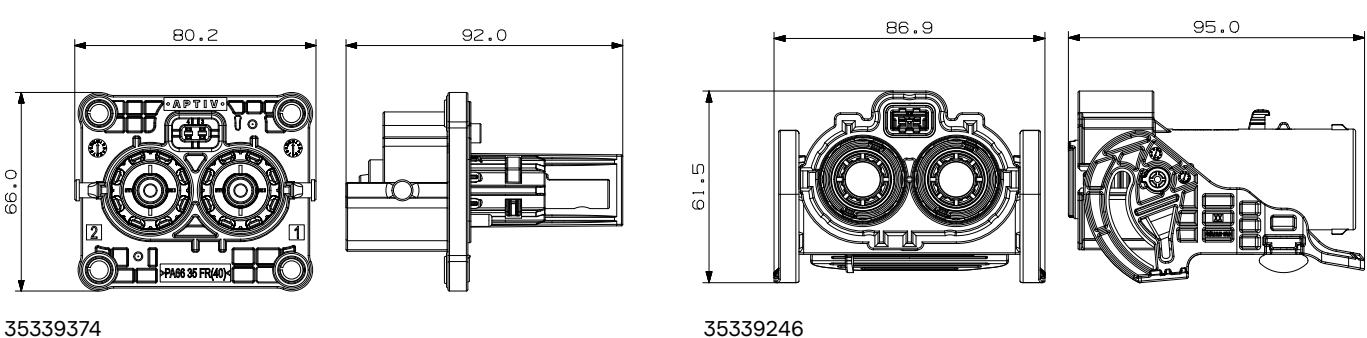


Index	Header connector	Mating connector	BOM
1	35339374	35339246	1
2	35339375	35339248	

ASSOCIATED PARTS

Part number	Description	BOM
Header		
15414399	HVIL DSQ terminal gold-plated 0.35 - 0.5 mm²	2
15414401	HVIL DSQ terminal gold-plated 0.75 - 1 mm²	
Mating Connector		
35347214	RCS 1100 female terminal silver version 50 mm²	2
35339282	RCS 1100 female terminal silver version 70 mm²	
35339287	RCS 1100 female terminal silver version 95 mm²	
35210585	Inner ferrule 50 mm²	2
35210586	Inner ferrule 70 mm²	
35210587	Inner ferrule 95 mm²	
35347217	Outer ferrule 50 mm²	2
35339328	Outer ferrule 70 mm²	
35339329	Outer ferrule 95 mm²	
35347219	Cable strain relief 50 mm²	2
35339348	Cable strain relief 70 mm²	
35339349	Cable strain relief 95 mm²	
35347218	Cable seal 50 mm²	2
35339332	Cable seal 70 mm²	
35339333	Cable seal 95 mm²	

DIMENSION MEASUREMENT SAMPLE



Part numbers, specifications, dimensions and performance data in this document are for general references only and are subject to change without notice. To verify product information, please contact an Aptiv representative.

SHIELDPACK™

HV RCS1190 SI 2 WAY



BENEFITS

- Specifically designed for harsh environment applications
- 180° header option also available (see HV RCS 1100 Series datasheet)
- Unique and safe mating screwing thanks to innovative Screw Position Assurance
- Same device interface for both RCS 1100 and RCS 1190

FEATURES

- Up to 95 mm² cross sections
- Made for applications with needs up to 375A
- Compliant to LV214/215

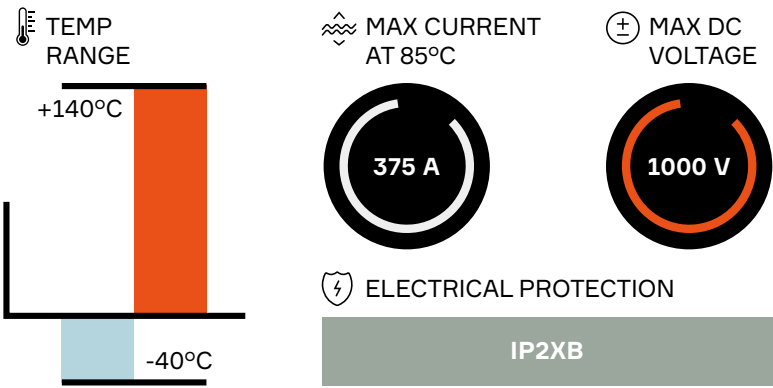
APPLICATIONS

Inverter
E-Motor
HV PDU
HV-Battery

AVAILABLE CONFIGURATIONS

Connector Type	Wire-to-device
Cable Exit Orientation	90°
Cable Range (mm²)	50 - 95 (power) 0.5 - 0.75 (HVIL)
Terminal Type	11 mm round contact system
# of Power Terminals	2
Shielding	Individual
HVIL	Shunt on female
Assembly Assurance	SPA (Screw Position Assurance)
Number of Indexes	2

PERFORMANCE

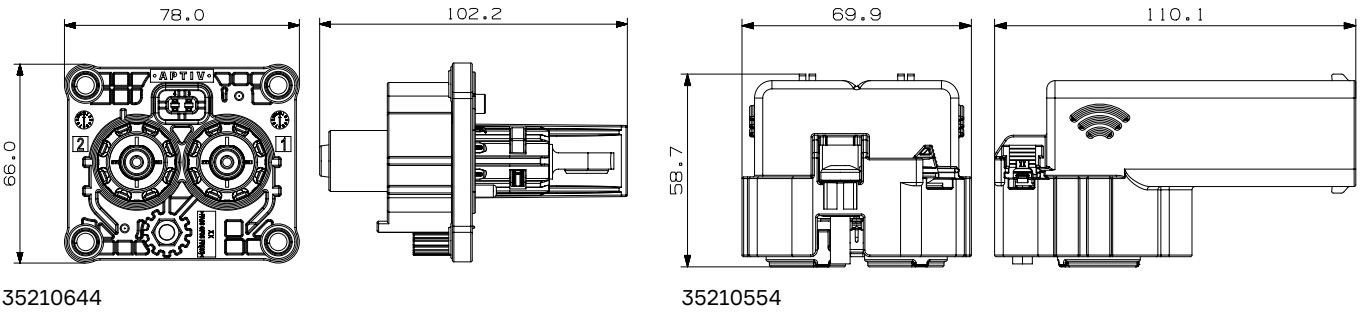


Index	Header connector	Mating connector	BOM
1	35210644	35210554	1
2	35210645	35210555	

ASSOCIATED PARTS

Part number	Description	BOM
Header Connector		
15414399	HVIL DSQ terminal gold-plated 0.35 - 0.5 mm²	2
15414401	HVIL DSQ terminal gold-plated 0.75 - 1 mm²	
Mating Connector		
35210576	RCS 1190 female terminal silver version 50 mm²	2
35210578	RCS 1190 female terminal silver version 70/95 mm²	
35210585	Inner ferrule 50 mm²	2
35210586	Inner ferrule 70 mm²	
35210587	Inner ferrule 95 mm²	
35210591	Outer ferrule 50 mm²	2
35210592	Outer ferrule 70 mm²	
35210593	Outer ferrule 95 mm²	
35210637	Cable strain relief 50 mm²	2
35210638	Cable strain relief 70 mm²	
35210639	Cable strain relief 95 mm²	
35210634	Cable seal 50 mm²	2
35210635	Cable seal 70 mm²	
35210636	Cable seal 95 mm²	

DIMENSION MEASUREMENT SAMPLE



SHIELDPACK™

HV AK CLASS 4 SI 3 WAY



BENEFITS

- High operating temperature
- High robustness against vibrations
- Optimized for better contact resistance and lesser retention force

FEATURES

- Up to 50 mm² cross sections
- For applications with needs up to 235A
- Compliant to LV214 / LV215
- Patented squeezing fixture for enhanced anti-vibration performance

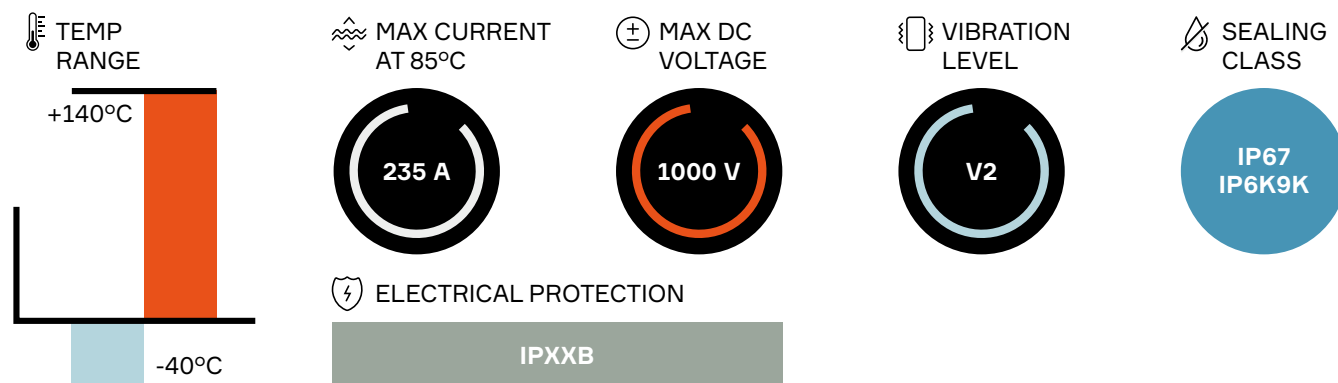
APPLICATIONS

Powertrain High Voltage / Current Modules:
Power Converter / Inverter
E-motor
HV Battery
HV Power Distribution Unit (PDU)

AVAILABLE CONFIGURATIONS

Connector Type	Wire-to-device
Cable Exit Orientation	90°
Cable Range (mm ²)	25 / 35 / 50
Terminal Type	8 mm round contact
# of Cavities	3
Shielding	Individual
HVIL	Shunt
Assembly Assurance	CPA
# of Code Indexes	2

PERFORMANCE

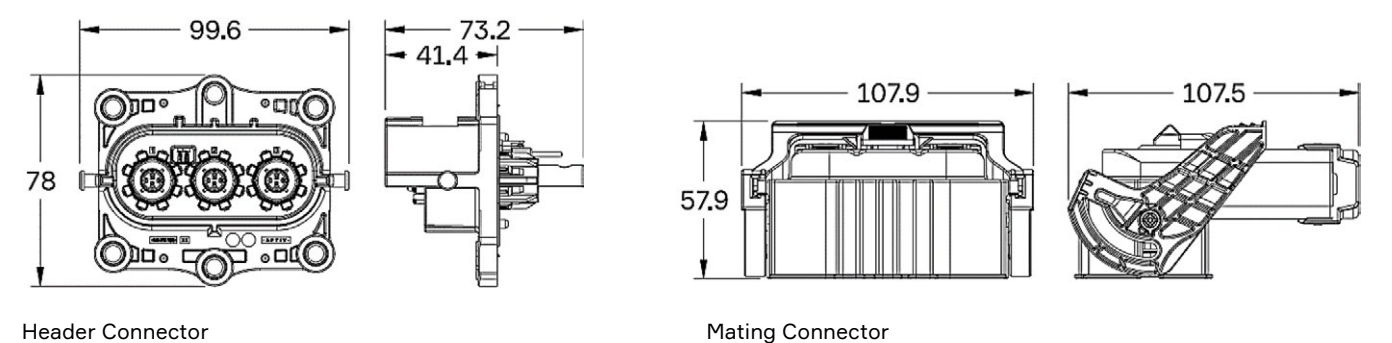


Index	Header Connector	Mating Connector	BOM
A	35249282	35255867	1
B	35253672	35263285	

ASSOCIATED PARTS

Part number			Description	BOM
Header Connector				
35244766			APT 6.3 Male Terminal 4 - 6 mm²	2
13952636			1.2 Male Terminal 0.5 - 0.75 mm²	2
Mating connector				
25 mm² Cable	35 mm² Cable	50 mm² Cable	APT-890 Female Terminal	
35172741	35172742 or 35150077			
35172744			Deep Drawn Socket Pin	3
35142203			Outer Insulation Cap	3
35172724	35172725	35172726	Inner Ferrule	3
35172727	35172728	35172729	Outer Ferrule	3
35172732	35172733	35172734	Cable Seal	3
35149115	35142208	35149113	Cable Strain Relief	3

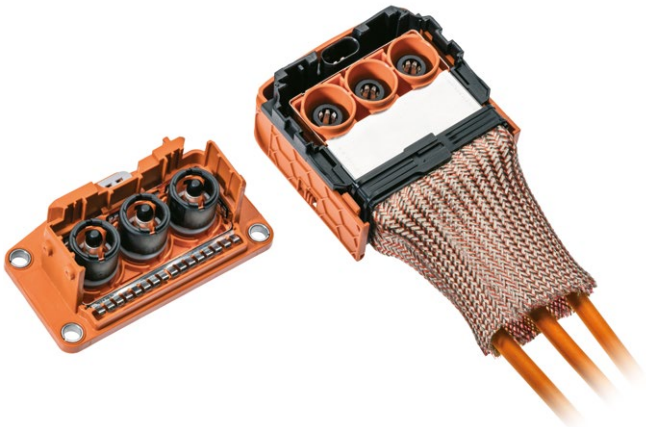
DIMENSION MEASUREMENT SAMPLE



Part numbers, specifications, dimensions and performance data in this document are for general references only and are subject to change without notice. To verify product information, please contact an Aptiv representative.

SHIELDPACK™

HV RCS890 SB RV 3 WAY



BENEFITS

- Ultra compact design for applications with space constraints
- Panel mount to device with face seal to module
- Header is sealed in both mated and unmated position

FEATURES

- Two-stage disconnect for safe unmating
- Easier mating with Slider Mating Assist System on harness connector
- Bundle shielding with external braid
- HVIL shunted in harness connector

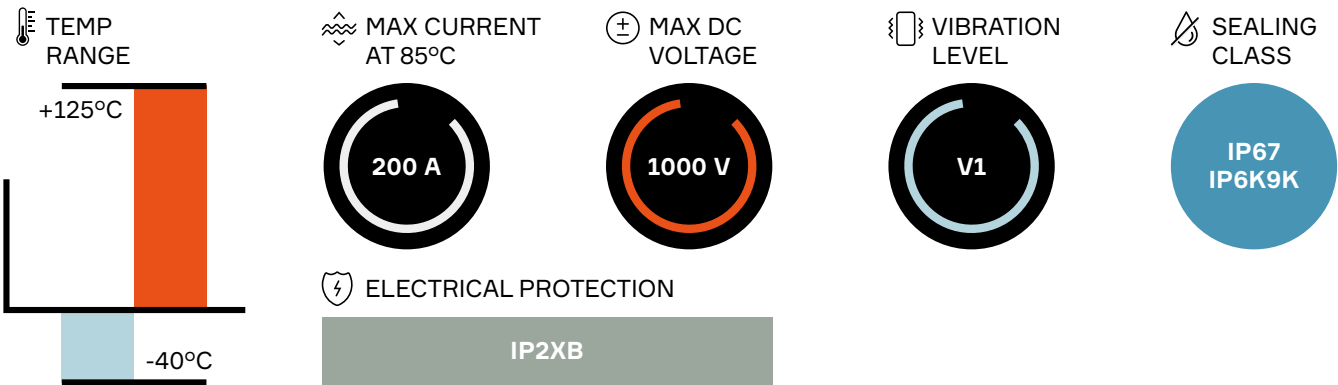
APPLICATIONS

- AC / DC inverter
- DC / DC converter
- HV battery
- Power electric box
- HV PDU

AVAILABLE CONFIGURATIONS

Connector Type	Wire-to-device
Cable Exit Orientation	90°
Cable Range (mm²)	16 - 70 (power) 0.5 - 0.75 (HVIL)
Terminal Type	8 mm round contact system
# of Power Terminals	3
Shielding	Bundle
HVIL	Shunt on female
Assembly Assurance	CPA
Number of Indexes	2

PERFORMANCE

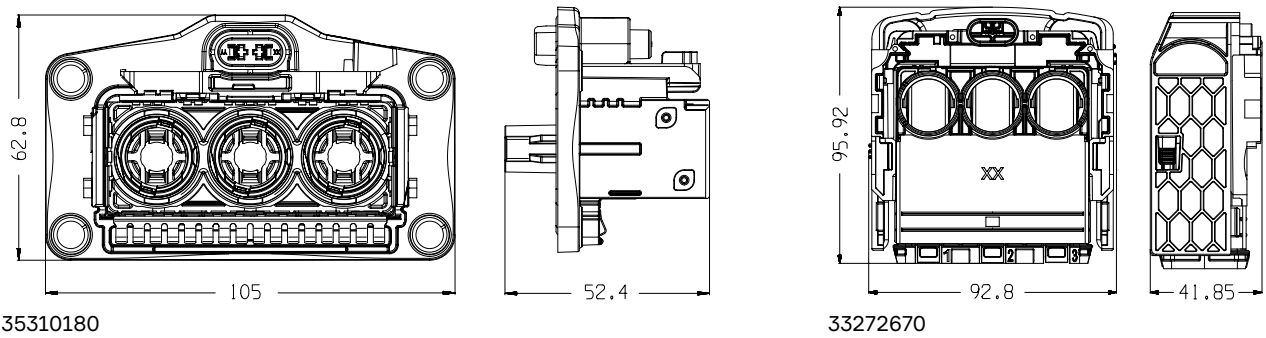


Index	Header connector	Mating connector	BOM
1	35310180	33272670	1
2	35310181	33282936	

ASSOCIATED PARTS

Part number	Description	BOM
Header		
35304635	RCS 800 male bus bar terminal silver version polarized pin	3
10811962	DCS2 1.5 female terminal gold-plated 0.5 - 1 mm²	2
15441379	DCS/DSQ 1.5 red single wire seal 0.35 - 0.5 mm²	2
15441380	DCS/DSQ 1.5 grey single wire seal 0.75 - 1 mm²	
Mating Connector		
33308229	RCS 890 female terminal silver version 16 - 25 mm²	3
33502217	RCS 890 female terminal silver version 35 - 50 mm²	
35225104	RCS 890 female terminal silver version 70 mm²	
33269218	RCS 890 single wire seal & retainer 16 - 25 mm²	3
33511753	RCS 890 single wire seal & retainer 35 - 40 mm²	
33511754	RCS 890 single wire seal & retainer 50 mm²	
35199856	RCS 890 single wire seal & retainer 70 mm²	
33272561	RCS 890 3-way half clamp	2

DIMENSION MEASUREMENT SAMPLE



Part numbers, specifications, dimensions and performance data in this document are for general references only and are subject to change without notice. To verify product information, please contact an Aptiv representative.

POWERPACK

HV RCS800 UI DM 1 WAY



BENEFITS

- Cost effective thanks to the direct connection between the female connector and the male terminals within the device case
- Unique and safe mating screwing with innovative Screw Position Assurance (SPA)
- Versatile solution covering multiple applications: high voltage power conversion and 48 volt

FEATURES

- Robust bolt driven mate assist
- Fingersafe via plastic tips on male pins
- Unshielded connector system

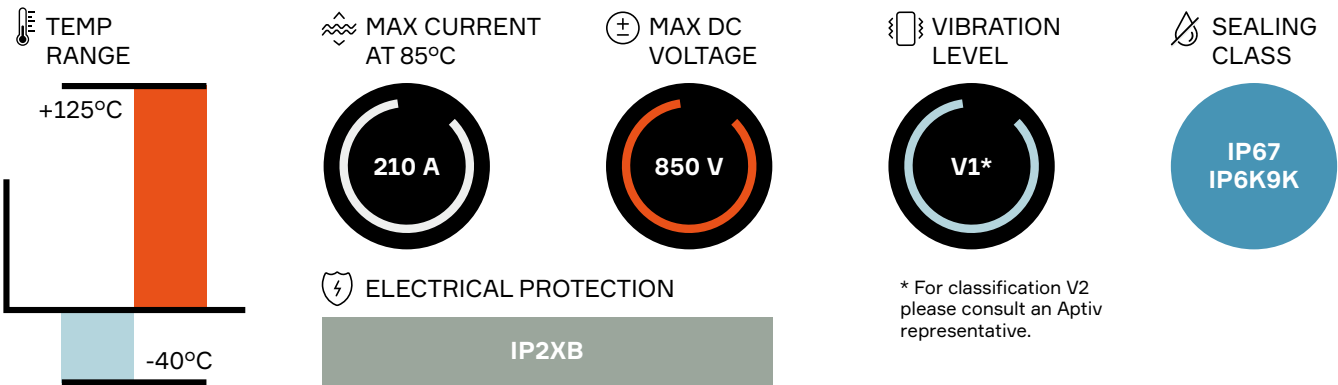
APPLICATIONS

AC / DC inverter
DC / DC converter
HV battery
Power electric box
HV PDU

AVAILABLE CONFIGURATIONS

Connector Type	Wire-to-device
Cable Exit Orientation	180°
Cable Range (mm²)	35 - 50 (power)
Terminal Type	8 mm round contact system
# of Power Terminals	1
Shielding	None
HVIL	None
Assembly Assurance	SPA
Number of Indexes	1

PERFORMANCE



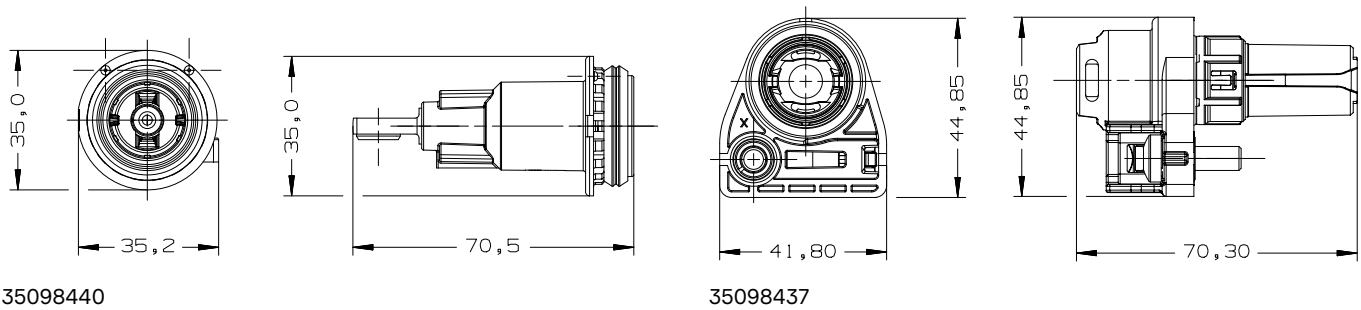
Header connector*	Mating connector	BOM
35098440	35098437	1

* Header connector is a fully assembled part and therefore has no associated parts.

ASSOCIATED PARTS

Part number	Description	BOM
Mating Connector		
13893887	RCS 800 female terminal 35 - 50 mm²	1
13893888	Female black single wire seal 35 mm²	1
13923559	Female grey single wire seal 50 mm²	
13893889	Retainer	1

DIMENSION MEASUREMENT SAMPLE



Part numbers, specifications, dimensions and performance data in this document are for general references only and are subject to change without notice. To verify product information, please contact an Aptiv representative.

SHIELDPACK™

HV AK PLASTIC PASS-THROUGH SI

16-50mm² 1, 2 AND 3 WAY AK



BENEFITS

- Very compact dimensions
- High robustness against vibrations
- Higher operating temperatures

FEATURES

- Ring terminal is bolted to device
- Cables are 360° individually shielded
- High voltage panel mount system
- Fully interchangeable with other AK supplier sources

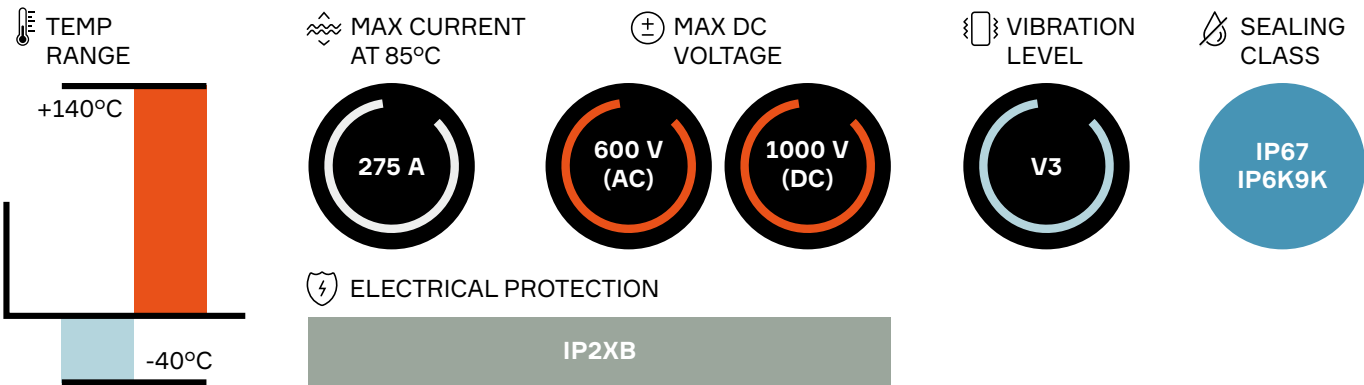
APPLICATIONS

AC / DC inverter
HV battery
HV PDU
Power electric box
E-motor

AVAILABLE CONFIGURATIONS

Connector Type	Pass-through
Cable Exit Orientation	180°
Cable Range (mm ²)	16 - 50 (power)
Terminal Type	O-ring
Shielding	Individual
HVIL	None

PERFORMANCE



Main Housing Body Components

Code	Number of ways			BOM
	1	2	3	
A	33340524	33340525	33340526	1

ASSOCIATED PARTS

Description	Cable size				BOM*
	16 mm ²	25 mm ²	35 mm ²	50 mm ²	
Peripheral seal	35116341				1, 2 or 3
Inner ferrule	35172747				1, 2 or 3
Outer ferrule	33340554	35172745	35172743	33340551	1, 2 or 3
Single wire seal	33340537	35172739	35172738	33340534	1, 2 or 3
Cable strain relief	33340542	33340541	33340540	33340539	1, 2 or 3

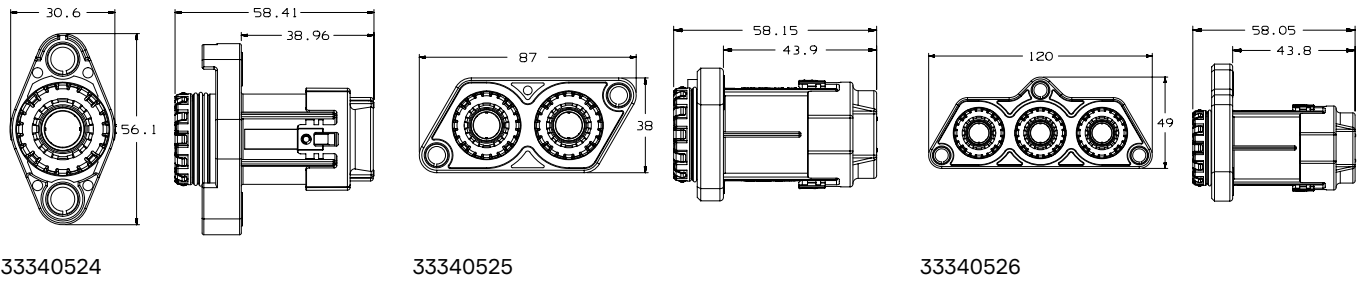
* Depending on if the component is for 1, 2 or 3 Way pass-through.

Component Kits**

Code	Cable size				BOM
	16 mm²	25 mm²	35 mm²	50 mm²	
1 Way					
A	33350177	33350176	33350175	33349598	1
B	-	-	-	35083309	1
2 Way					
A	33350180	33350179	33350178	33349600	2
3 Way					
A	33350183	33350182	33350181	33350072	3

** Available configurations with associated BOM (Bill Of Materials).

DIMENSION MEASUREMENT SAMPLE



Part numbers, specifications, dimensions and performance data in this document are for general references only and are subject to change without notice. To verify product information, please contact an Aptiv representative.

SHIELDPACK™

HV METAL PASS-THROUGH SI

70-95mm² 1 WAY



BENEFITS

- High operating temperature
- Applicable under extreme vibration
- Robust design for harsh environments
- Very compact dimensions

FEATURES

- For applications with needs up to 400A
- Compliant to USCAR-2 / USCAR-37
- High voltage panel mount system
- Die-casting housing
- Compatible with ring terminal bolted to device

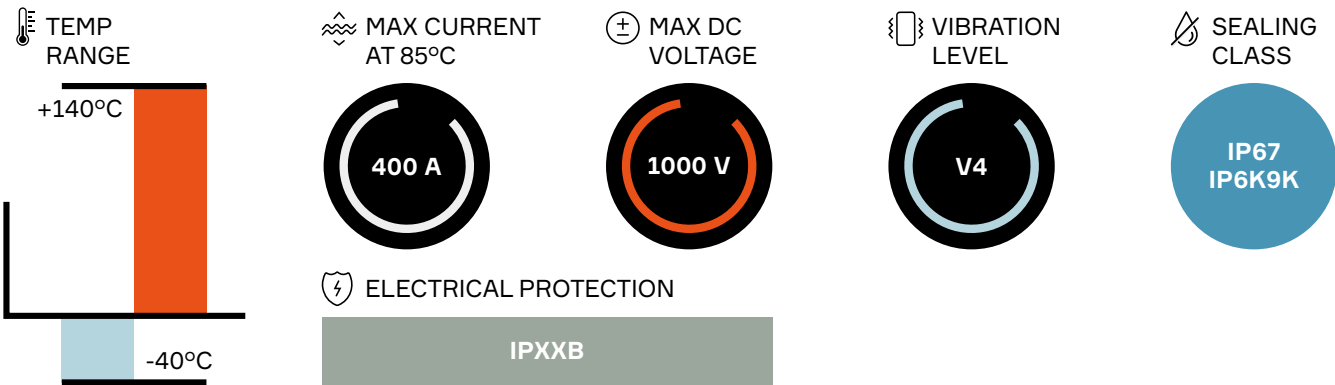
APPLICATIONS

Powertrain High Voltage / Current Modules:
Power Converter / Inverter
E-motor
PDU / BDU

AVAILABLE CONFIGURATIONS

Connector Type	Pass-through
Cable Exit Orientation	180°
Cable Range (mm ²)	70 / 95
Terminal Type	Ring Terminals
# of Cavities	1
Shielding	Individual
HVIL	None
Assembly Assurance	Screw Position Assurance
# of Code Indexes	6

PERFORMANCE



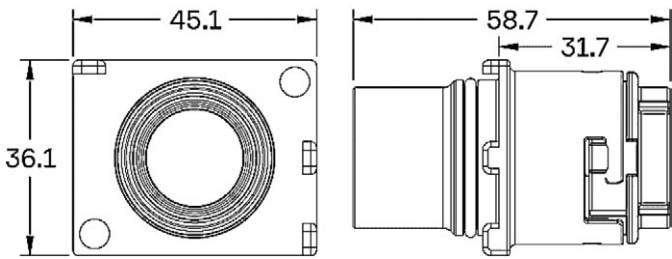
Index	Pass-through Connector		BOM
	70 mm ² Cable	95 mm ² Cable	
101	35274900	35255189	1
102	35274901	35235654	
103	35274902	35235980	
104	35274903	35235981	
108	35274904	35235982	
109	35274905	35235983	

ASSOCIATED PARTS

Part number		Description	BOM
70 mm ² Cable	95 mm ² Cable		
35516040 or equivalent	35516043 or equivalent	Ring Terminal / Tubular Lug	1
Please contact your Aptiv representative		Sonic Weld Ring Terminal	
35274906	35235653	Ferrule	1
35235632		O-Ring Seal	1
35274909	35235651	Cable Seal	1
35274908	35235652	Lock Retainer	1

Additional validation is required when using with other terminals.
Sonic weld ring terminal is a user customized part. Please contact an Aptiv representative for more information.

DIMENSION MEASUREMENT SAMPLE



All Connectors

SHIELDPACK™

HV PLASTIC PASS-THROUGH SI

50-70mm² 2 WAY



BENEFITS

- High operating temperature
- Enhanced anti-vibration performance
- Very compact dimensions

FEATURES

- For applications with needs up to 330A
- Compliant to USCAR-2 / USCAR-37
- Plastic main housing frame with stamped shielding terminals
- Anti-rotation shielding components with extra safeguard for 70 mm² cables
- Compatible with ring terminal bolted to device

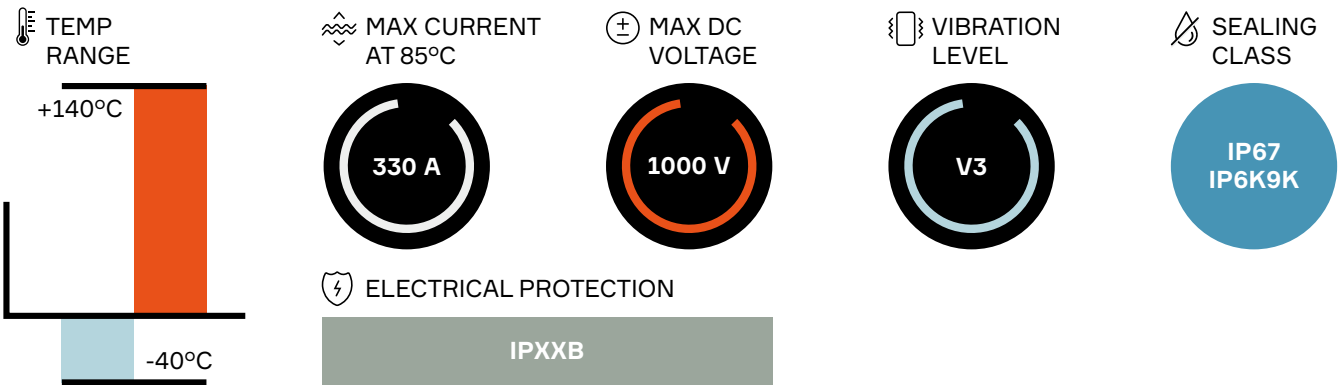
APPLICATIONS

Powertrain High Voltage / Current Modules:
Power Converter / Inverter
E-motor
PDU / BDU

AVAILABLE CONFIGURATIONS

Connector Type	Pass-through
Cable Exit Orientation	180°
Cable Range (mm ²)	50 / 70
Terminal Type	Ring Terminals
# of Cavities	2
Shielding	Individual
HVIL	None
Assembly Assurance	Screw Position Assurance
# of Code Indexes	1

PERFORMANCE



Index	Pass-through Connector		BOM
	2 Screw Version	3 Screw Version	
A	35197716	35197715	1

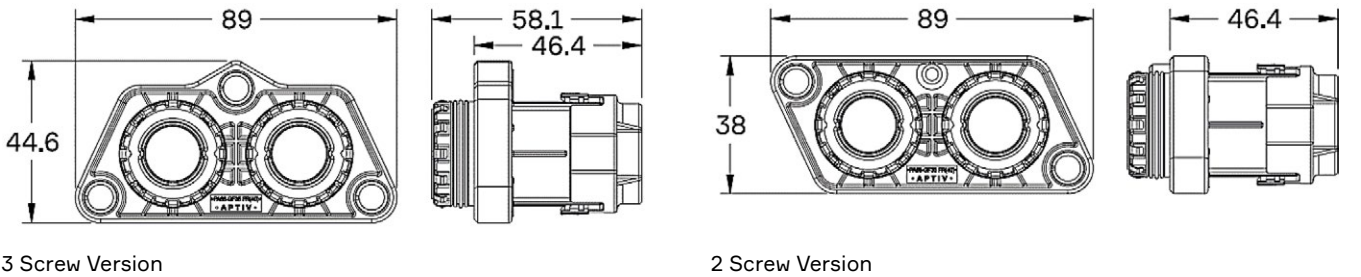
Additional codes or mirrored versions are offered on demand. Contact an Aptiv representative for details.

ASSOCIATED PARTS

Part number		Description	BOM
LV Cable	ISO Cable		
35516040 or equivalent		Ring Terminal / Tubular Lug	2
Please contact your Aptiv representative		Sonic Weld Ring Terminal	
35197711		Shielding Terminal	2
35197311	35434228	Shielding Outer Ferrule	2
35197273		Peripheral Seal	2
35197279	35434214	Cable Seal	2
35197706	35434216	Cable Strain Relief	2
35207823	35434229	Anti-rotation Safeguard	2

Additional validation is required when using with other terminals.
50 mm² parts are offered on demand, and AK Pass-through products are recommended if only 50 mm² is needed.
Sonic weld ring terminal is a user customized part. Please contact an Aptiv representative for more information.

DIMENSION MEASUREMENT SAMPLE



SHIELDPACK™

HV PLASTIC PASS-THROUGH SI

95-120mm² 1 AND 2 WAY



BENEFITS

- Plastic main housing frame
- Terminal Size/Style: Ring/Tongue

FEATURES

- High operating temperature
- High robustness against vibrations
- Solution for demands on 120 mm²
- More operation-friendly cable anti-rotation feature

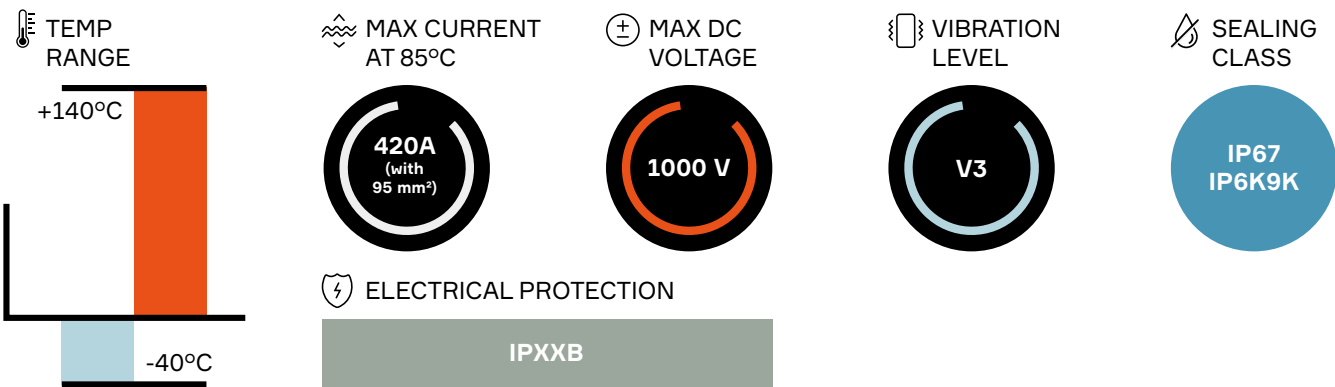
APPLICATIONS

Powertrain High Voltage / Current Modules:
Power Inverter/Converter
E-motor
PDU

AVAILABLE CONFIGURATIONS

Connector Type	Pass-through
Cable Exit Orientation	180°
Cable Range (mm ²)	95 - 120
Terminal Type	Ring/Tongue
# of Power Terminals	1W & 2W
Shielding	360° Shielding
HVIL	None
# of Indexes	1

PERFORMANCE



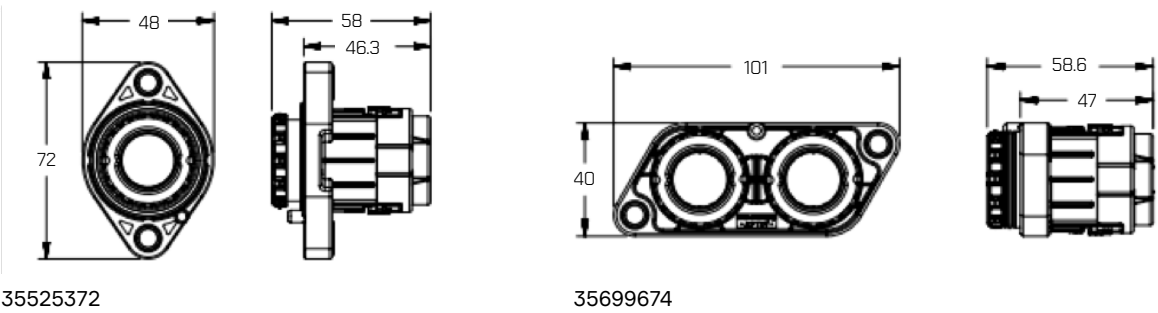
Main Housing Body Components

Code	Number of ways		BOM
	1	2	
A	35525372	35699674	1

ASSOCIATED PARTS

Description	1 Way		2 Way		BOM
	95 mm ²	120 mm ²	95 mm ²	120 mm ²	
Peripheral Face Seal	35525378		35699674		1 or 2
Single Wire Seal (M6371)	35525381	35525380	35525381	35525380	1 or 2
Protection Cover Assy	35525384	35525383	35525384	35525383	1 or 2
Shielding Outer Ferrule	35525391	35525390	35525391	35525390	1 or 2
ASM Shield Terminal	35525392				1 or 2
Ring Terminal	35617874				1 or 2

DIMENSION MEASUREMENT SAMPLE



Part numbers, specifications, dimensions and performance data in this document are for general references only and are subject to change without notice. To verify product information, please contact an Aptiv representative.

Charging Inlets

SELECTOR GUIDE

APPLICATIONS:

- On-vehicle charging inlets



Application	CCS1 Inlet
Description	CCS1 Inlet
Mating cycles	10 000
# of phases	1
Amperage	500 A
Voltage	600 V
Wire selections	6 or 16 mm ² (AC) 70 or 95 mm ² (DC)
See Page	90 - 91



CCS 1 INLET



BENEFITS

- Complies to SAE J1772/IEC 62196 interface
- Real time temperature sensing
- Simplified, pluggable design

FEATURES

- Eliminates complex wire harness build processes
- Ensures end user safety with accurate, real time temperatue monitoring
- Servicable DC dust cap

APPLICATIONS

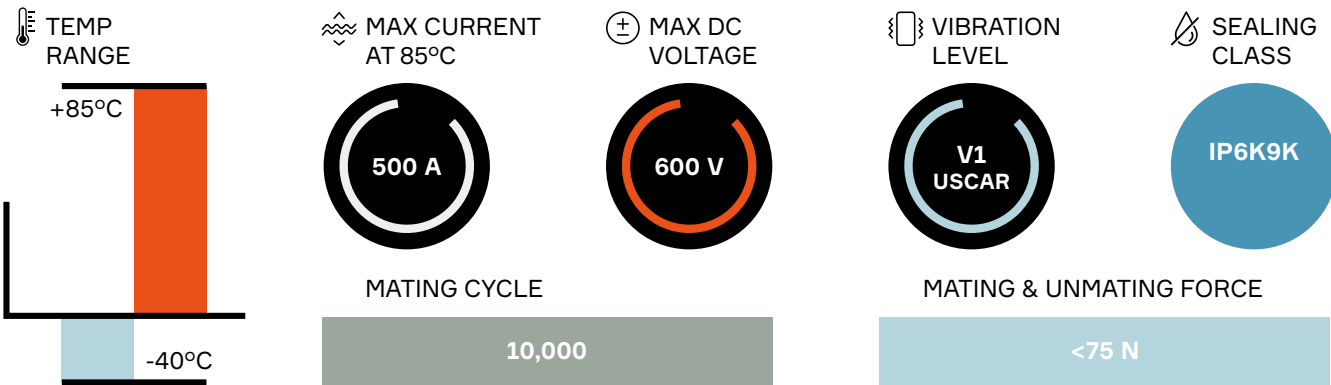
EV Charging Inlet

AVAILABLE CONFIGURATIONS

Connector Type	Vehicle Inlet
Cable Exit Orientation	Left / Right*/ 90°*/ 180°
Cable Range (mm²)	AC : 6 mm² or 16 mm² DC : 70 mm², 95 mm², 120 mm² *
Terminal Type	Male
Number of Terminals	7
Shielding	Unshielded

**Please contact an Aptiv representative*

PERFORMANCE



CONNECTOR PART NUMBER

Part number	Description	BOM
35715048*	CCS1 axial (180°) dress sub-assembly	1
35807752*	CCS1 left dress sub-assembly	1
35714998**	CCS1 right dress sub-assembly	1
36018570**	CCS1 down (90°) dress sub-assembly	1

**Order PN above that fits vehicle packaging/routing application*

***Please contact an Aptiv representative*

ASSOCIATED PARTS

Part number	Description	BOM
Terminal		
35446044	Power terminal (for 6mm² applications)	2
35446045	Ground terminal (for 6mm² applications)	1
35504778	Power terminal (for 16mm² applications)	2
35504787	Ground terminal (for 16mm² applications)	1
35446053*	DC Bus Bar terminal long (Left/Right dress applications)	1
35446052*	DC Bus Bar terminal short (Left/Right dress applications)	1
35504457	DC Bus Bar terminal (Down/180° dress applications)	2
Components and Accessories		
35474866	6 mm² cable seal (AC wiring)	3
35446066	6 mm² cable seal retainer (AC wiring)	3
35505094	16 mm² cable seal (AC wiring)	3
35504789	16 mm² cable seal retainer (AC wiring)	3
35446061	95 mm² cable seal (DC wiring)	2
35758185	95 mm² cable seal retainer (DC wiring)	2
35504458	70 mm² cable seal (DC wiring)	2
35758186	70 mm² cable seal retainer (DC wiring)	2
35700533*	120 mm² cable seal (DC wiring)	2
35700534*	120 mm² cable seal retainer (DC wiring)	2
35446063	Access Panel Seal	1
35758183	Access Panel Seal Retainer/Cover	1
35556303	Access Panel Seal (Axial/180 Dress Variant)	1
35758184	Access Panel Seal Retainer/Cover (Axial/180 Dress Variant)	1

**Please contact an Aptiv representative*

***Order above seal/retainer combos per intended wire size application*

**** Seals validated on Coficab Cofflex-R T4 HV and Aptiv M7284 cable*

For **more** information:

Visit our website: **aptiv.com**

Browse our E-catalog: **aptiv.com/en/solutions/connection-systems**

Contact your local distributor:

