

Video Solution



A New Perspective on Vehicle Systems Validation

The vehicles today's customers want most come equipped with advanced driver assistance systems (ADAS). They have features like forward collision warning. Automatic emergency braking. Lane assist. Adaptive cruise control. But for manufacturers, validating the performance of these advanced systems is extremely challenging — unless you have a tool that can show you everything that is happening in and around a vehicle.

Aptiv Connect Qualifier offers an optional video system that provides this 360° view. It allows you to connect up to four cameras to your Aptiv EP-600, EP-1000, or EP-2000 vehicle data recorder (VDR). It then syncs video from all four cameras with graphs of the vehicle's data signals and a GPS route map. As a

result, you can see everything that's happening on a single pane of glass.

The Aptiv video system is highly configurable. You choose from a wide variety of cameras and mountings systems suitable for interior and exterior use. You can also configure the video recording and data collection so that it captures what is happening for a pre-defined number of seconds before and after events of interest to you. No more fast-forwarding and rewinding to find the right place on the video feed. Aptiv Qualifier does the hard work for you so that the validation process becomes faster and easier than ever before.

For more information or to see a demo of the video system, contact your Aptiv representative or visit our [website](#).



Save millions by quickly finding and fixing issues with advanced systems



Shave months off warranty resolution time



Improve vehicle quality by syncing video with signal graphs and route maps

Learn More at [Aptiv.com/Solutions/Connected-Services](https://www Aptiv.com/Solutions/Connected-Services)

• **APTIV** •

TECHNICAL SPECIFICATIONS

Video System Hardware



- Aptiv EP-600, EP-1000, or EP-2000 VDR



- Aptiv A-PS1 power supply



- Axis F44 video unit
- DB9, DB26, and Ethernet cables
- Standard 32 GB SD card (holds approximately 24 hours of video); optional 64 GB SD card (holds approximately 48 hours of video)
- Mounting hardware as needed

Camera Options

Axis F1005-E



- Interior or exterior use
- Rugged design
- Fixed lens with 1080p resolution
- Wide 113° horizontal field of view
- Fits in a variety of mounting options

Axis F1015



- Interior use
- Flexible design
- Varifocal lens with 1080p resolution
- 52° to 97° horizontal field of view
- Fits in a variety of mounting options

Axis F1035-E



- Interior or exterior use
- Rugged design
- Fisheye lens with 1080p resolution
- Ultra-wide 194° horizontal field of view
- Fits in a variety of mounting options

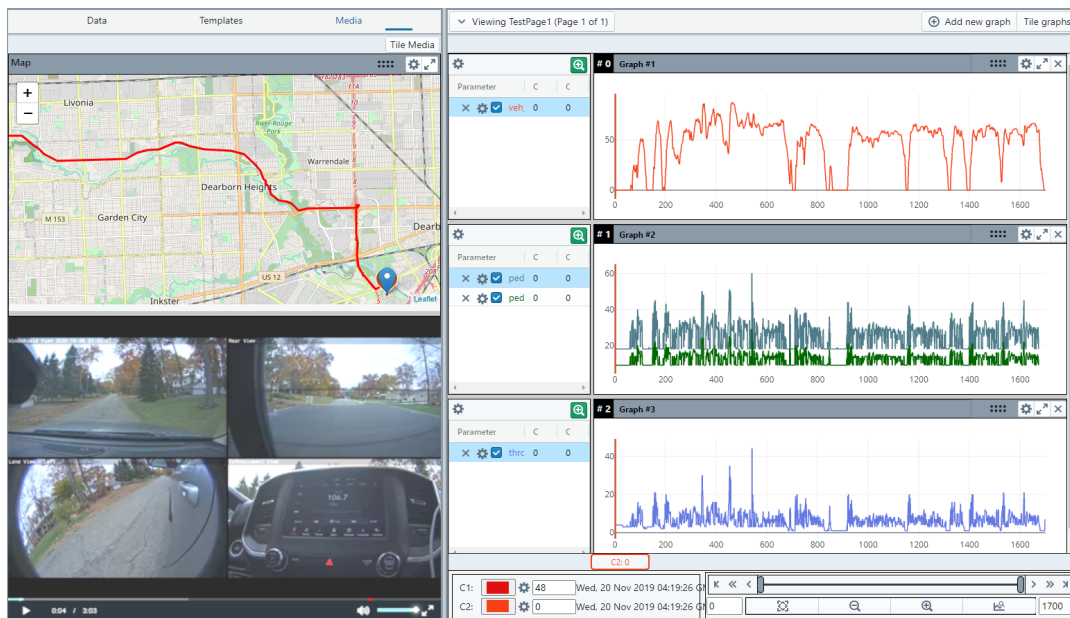
Additional camera options available on request.



Choose from a variety of mounting options for interior or exterior applications on any kind of vehicle.

APTIV CONNECT QUALIFIER VIDEO SYSTEM

FEATURES	BENEFITS
Video System	
Connect up to 4 cameras	Validate ADAS and other features that require multiple, simultaneous views inside and outside the vehicle
Capture 1080p video at up to 15 frames per second or 720p video at up to 30 frames per second	Get the resolution and frame rate that will allow you to see what is happening while minimizing data upload costs
Select from a variety of cameras with different field-of-view capabilities and interior and exterior mounting	Tailor the video systems so that it can help you solve your team's unique challenges
Integration	
Use the APS-1 power supply or connect directly to the vehicle	Enable VDR wake/sleep strategy to handle video system power needs without draining vehicle battery
Remotely configure the camera system to record desired events, as well as vehicle data signals	Easily update your video recording strategy as your needs change
Define how long you want to capture video before and after an event	Simplify troubleshooting by recording the right amount of video footage
Qualifier Software	
Sync video with data signals and GPS map	See at a glance everything that was happening with a vehicle at a particular point in time
View video from all four cameras on a single screen	Find the root cause of issues quickly
Tailor your video capture for each event and each user	Customize the solution so that it meets your validation needs



Aptiv Connect Qualifier syncs video with vehicle data signals and a route map to make troubleshooting advanced systems faster than ever before.

About Aptiv

Aptiv is a global technology leader with more than 160,000 people across more than 125 manufacturing facilities and 15 major technical centers worldwide. With a presence in 44 countries, we address mobility's toughest challenges through our deep software and systems integration expertise, delivering market-relevant solutions for our customers.

Our mission is to make the world safer, greener, and more connected than ever before. As these trends converge and the world of mobility changes, we will lead this change.

Mobility has the power to change the world, and we have the power to change mobility.